

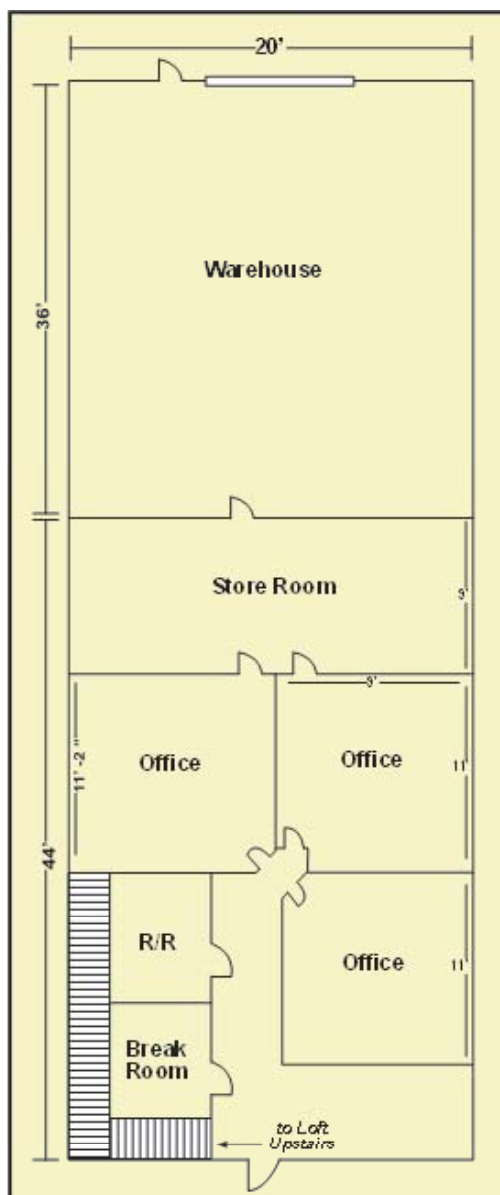


- LOCATION:** 12155 Metro Parkway, Unit 15, Fort Myers, FL 33912
- ZONING:** IL - Light Industrial
- UTILITIES:** County Water & Sewer
- SIZE:** 2,160± Sq. Ft. Total (1,600± Sq. Ft. Grade Level plus 560± Sq. Ft. 2nd Floor Offices)
- LEASE RATE** \$1,600.00 per Month plus Sales Tax or
\$8.64 PSF NNN Base Rent plus \$3.36 PSF CAM
- COMMENTS:** Store-front office / warehouse with direct Metro Parkway frontage and ample signage opportunity. Includes 880± sq. ft. of office space on first floor and 560± sq. ft. of office space on second floor. Truck access to overhead door in rear of unit. Located on the east side of Metro just north of Crystal Dr. See reverse side for more information.
- CONTACT:** JOHN KREMSKI, CCIM
PHONE: (239) 425-6017
FAX: (239) 425-6004
E-MAIL: john@johnkremski.com
WEBSITE: www.johnkremski.com

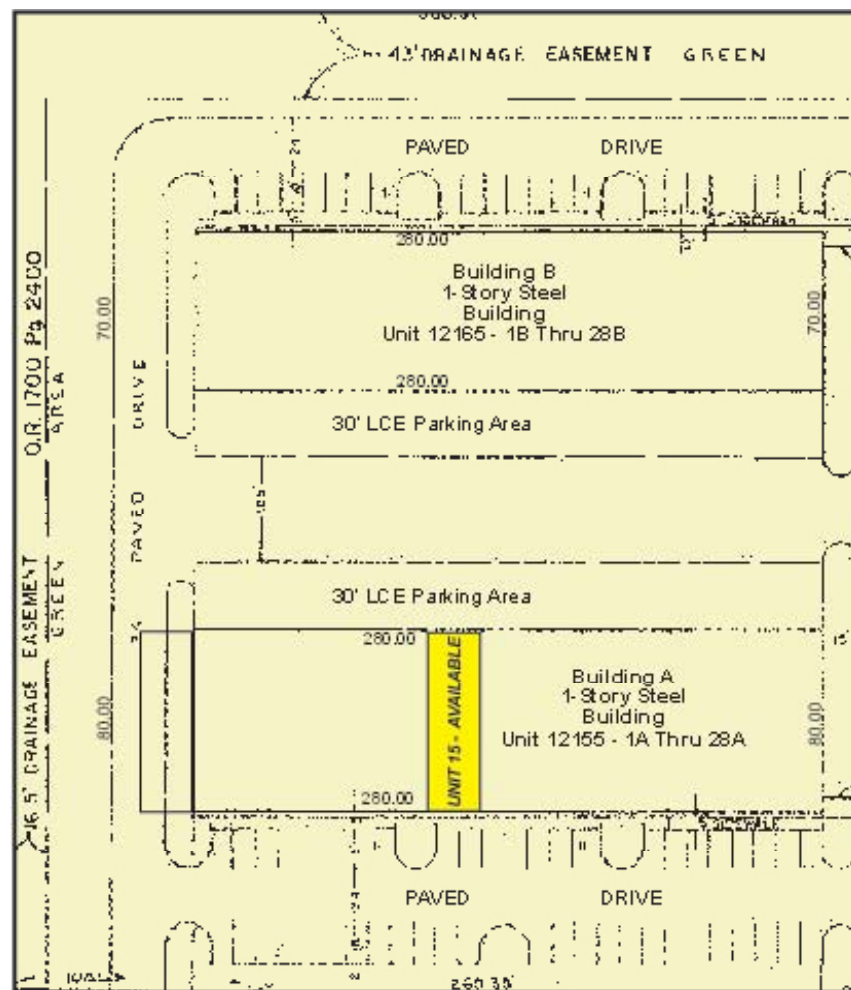
12155 Metro Parkway, Unit 15, Fort Myers, FL 33912



Floor Plan



Site Plan



The statements and figures presented herein, while not guaranteed, are secured from sources we believe authoritative. Subject to prior sale, lease, withdrawal and price change without notice.