

Date: 08/03/06

Current Geography Selection: (4 Selected) 1,3,5,10 mile radii: 26405 Loblolly Bay Road SW, Muse

Current Index Base: Entire US

Lat: 26.827862 Long: -81.527005
 County: Glades County Pop: 11,231
 Zip: 33471 Pop: 6,716

2000 US Census Overview Comparison Report

	1 Miles:	3 Miles:	5 Miles:	10 Miles:
Basic Variables				
Population	116	520	1,930	17,619
Female Population	52	235	884	8,051
Female Percentage	45.2%	45.2%	45.8%	45.7%
Male Population	64	285	1,046	9,569
Male Percentage	54.8%	54.8%	54.2%	54.3%
Households	43	124	537	5,616
Age: Total				
Age 0 to 4	8.9%	8.9%	7.9%	7.8%
Age 5 to 9	8.3%	8.3%	7.6%	8.1%
Age 10 to 13	5.2%	5.2%	5.6%	5.9%
Age 14 to 17	5.7%	5.7%	6.0%	6.2%
Age 18 to 20	4.5%	4.5%	4.9%	4.9%
Age 21 to 24	6.5%	6.5%	5.7%	6.2%
Age 25 to 29	8.8%	8.8%	7.8%	7.4%
Age 30 to 34	8.2%	8.2%	7.5%	6.9%
Age 35 to 39	7.1%	7.1%	7.0%	6.8%
Age 40 to 44	7.4%	7.4%	7.1%	6.5%
Age 45 to 49	5.6%	5.6%	6.4%	5.5%
Age 50 to 54	5.6%	5.6%	6.0%	5.3%
Age 55 to 59	5.0%	5.0%	5.5%	4.5%
Age 60 to 64	4.6%	4.6%	4.9%	4.3%
Age 65 to 69	3.1%	3.1%	3.4%	3.9%
Age 70 to 74	2.2%	2.2%	2.7%	3.8%
Age 75 to 79	1.6%	1.6%	2.0%	3.1%
Age 80 to 84	0.9%	0.9%	1.2%	1.7%
Age 85 Plus	0.6%	0.6%	0.7%	1.3%
Median Age	31.2	31.2	32.9	32.5
Educational Attainment				
No schooling completed	2.9%	2.9%	3.8%	3.9%
School: PreK to 8	15.7%	15.7%	14.5%	19.9%
School: 9th to 11th grade, no diploma	19.3%	19.3%	19.7%	18.5%
School: High school graduate	38.7%	38.7%	35.1%	30.5%
College: Associate degree	2.8%	2.8%	3.0%	3.6%
College: Some college, no degree	18.1%	18.1%	17.4%	14.7%
College: Bachelor's degree	1.3%	1.3%	3.9%	5.8%
College: Graduate degree	1.3%	1.3%	2.5%	3.1%
Race & Ethnicity				
American Indian and Alaska Native Alone	0.9%	0.9%	0.7%	0.7%
Asian Alone	0.5%	0.5%	0.3%	0.3%
Black Alone	0.8%	0.8%	0.7%	6.8%

Native Hawaiian and Other Pacific Islander Alone	0.0%	0.0%	0.0%	0.0%
Some Other Race Alone	10.4%	10.4%	9.3%	15.2%
Two or More Races	2.2%	2.2%	2.2%	2.9%
White Alone	85.3%	85.3%	86.8%	74.1%
Hispanic or Latino	32.0%	32.0%	27.8%	36.5%
Not Hispanic or Latino	68.0%	68.0%	72.2%	63.5%

Income by Type: Household Income

Less than \$10,000	5.0%	5.0%	6.9%	8.8%
\$10,000 to \$14,999	12.4%	12.4%	10.1%	9.8%
\$15,000 to \$19,999	11.2%	11.2%	10.2%	10.1%
\$20,000 to \$24,999	5.3%	5.3%	6.1%	8.0%
\$25,000 to \$29,999	14.6%	14.6%	9.8%	8.4%
\$30,000 to \$34,999	4.0%	4.0%	5.5%	8.2%
\$35,000 to \$39,999	9.2%	9.2%	6.4%	5.4%
\$40,000 to \$44,999	4.8%	4.8%	4.9%	5.5%
\$45,000 to \$49,999	8.4%	8.4%	7.3%	4.7%
\$50,000 to \$59,999	12.8%	12.8%	14.1%	9.6%
\$60,000 to \$74,999	4.7%	4.7%	9.0%	9.2%
\$75,000 to \$99,999	2.6%	2.6%	3.2%	6.4%
\$100,000 to \$124,999	3.0%	3.0%	4.0%	2.6%
\$125,000 to \$149,999	0.0%	0.0%	0.5%	1.1%
\$150,000 to \$199,999	0.0%	0.0%	0.0%	0.7%
\$200,000 or more	2.1%	2.1%	2.1%	1.5%
Median Household Income	\$31,346	\$31,346	\$36,142	\$32,835
Per Capita Income	\$14,942	\$9,615	\$12,416	\$14,370
Average Household Income	\$40,337	\$40,337	\$44,626	\$45,083

Size of Household

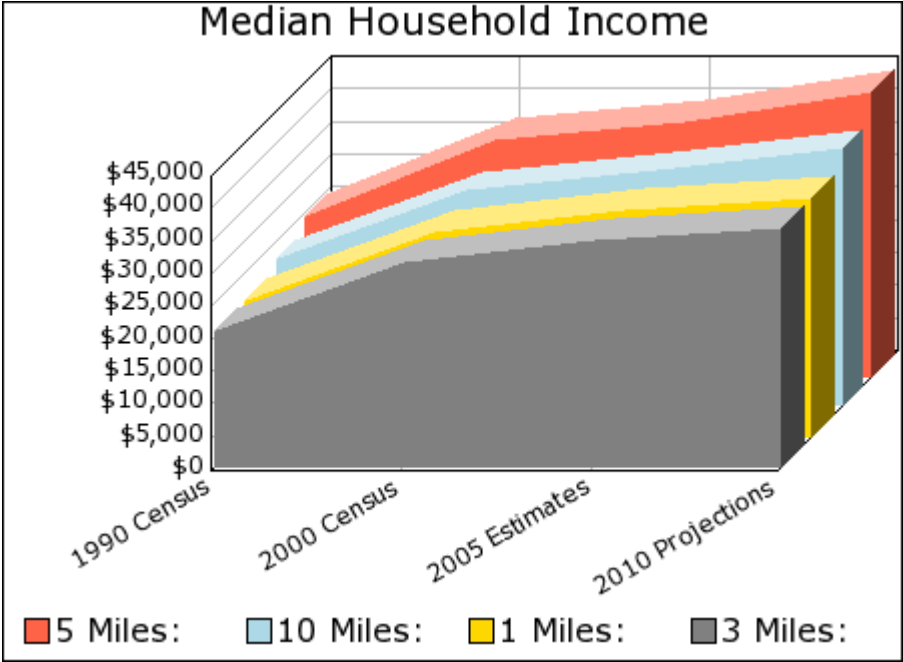
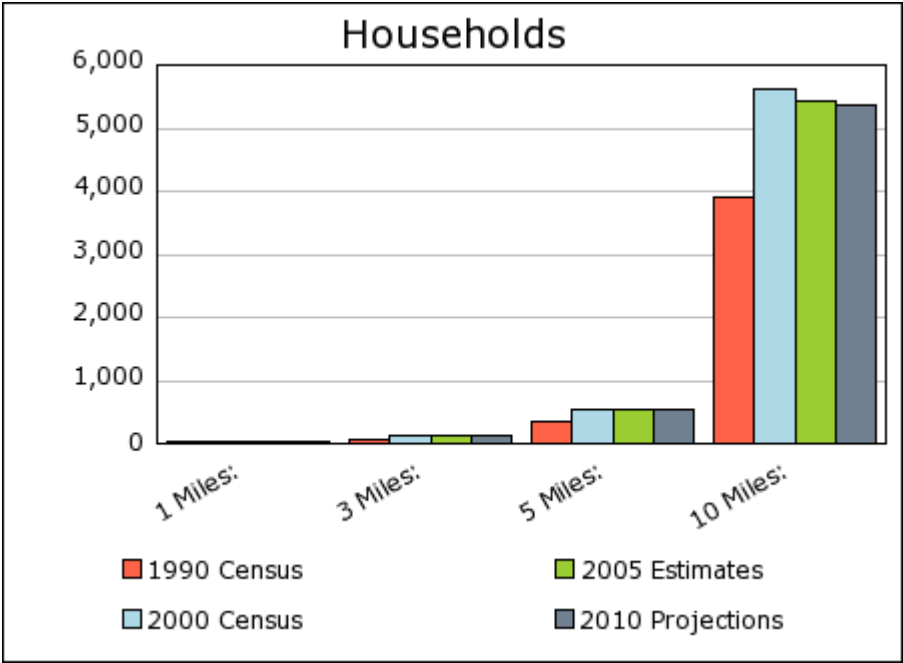
1 Person Households	17.6%	17.6%	19.0%	20.7%
2 Person Households	33.7%	33.7%	35.4%	33.1%
3 Person Households	16.9%	16.9%	16.6%	14.9%
4 Person Households	20.4%	20.4%	18.7%	14.5%
5 Person Households	6.3%	6.3%	5.3%	8.8%
6 Person Households	3.1%	3.1%	3.5%	4.4%
7 + Person Households	1.8%	1.8%	1.2%	4.5%

Housing Value & Rental Costs

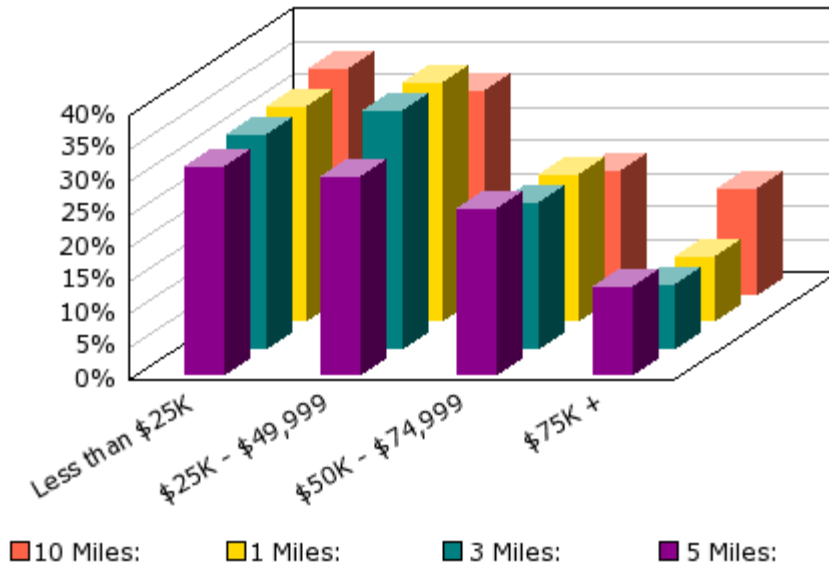
Median Owner-Occupied Housing Value	\$69,165	\$69,165	\$82,478	\$73,007
Average Monthly Contract Rent	\$334	\$334	\$389	\$378

Housing Units - Year Moved In

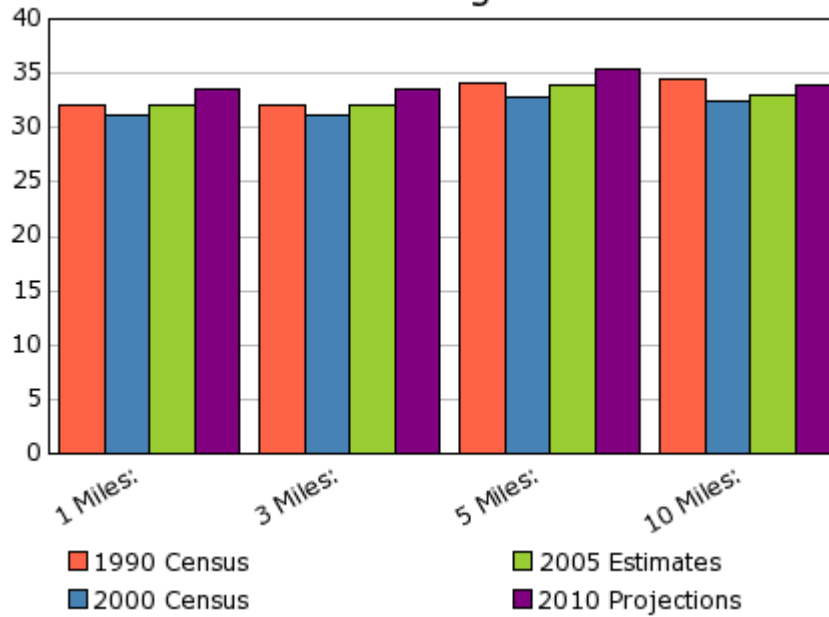
1969 or earlier	4.8%	4.8%	3.6%	3.2%
1970 to 1979	6.2%	6.2%	7.3%	7.9%
1980 to 1989	18.7%	18.7%	18.4%	17.1%
1990 to 1994	22.1%	22.1%	22.8%	20.3%
1995 to 1998	32.3%	32.3%	32.5%	32.2%
1999 to 2000	15.9%	15.9%	15.4%	19.2%
Housing Stability (5 Year)	54.5%	54.5%	55.7%	50.7%
Housing Turnover (1 Year)	15.4%	15.4%	14.6%	18.8%

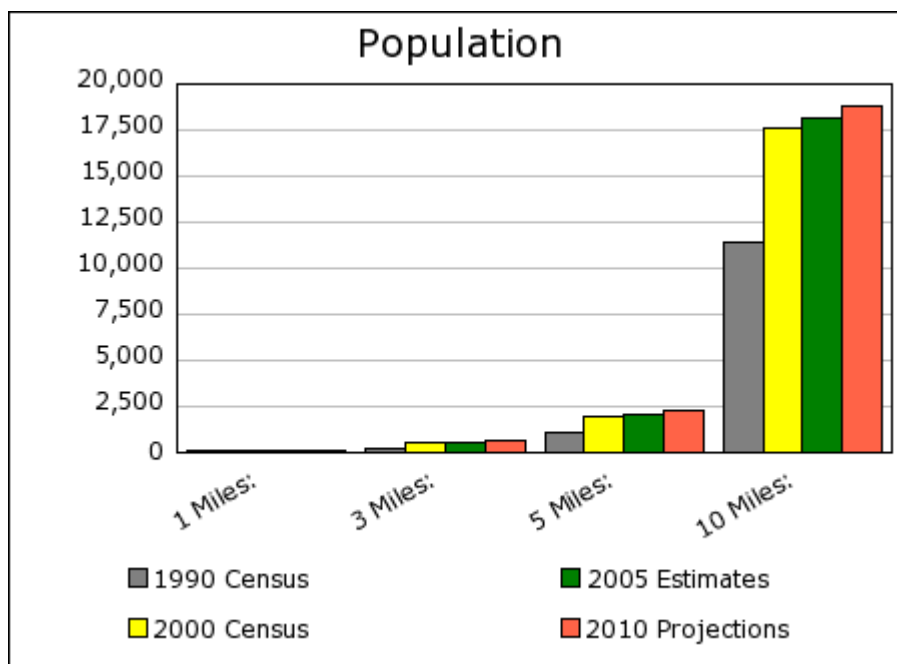
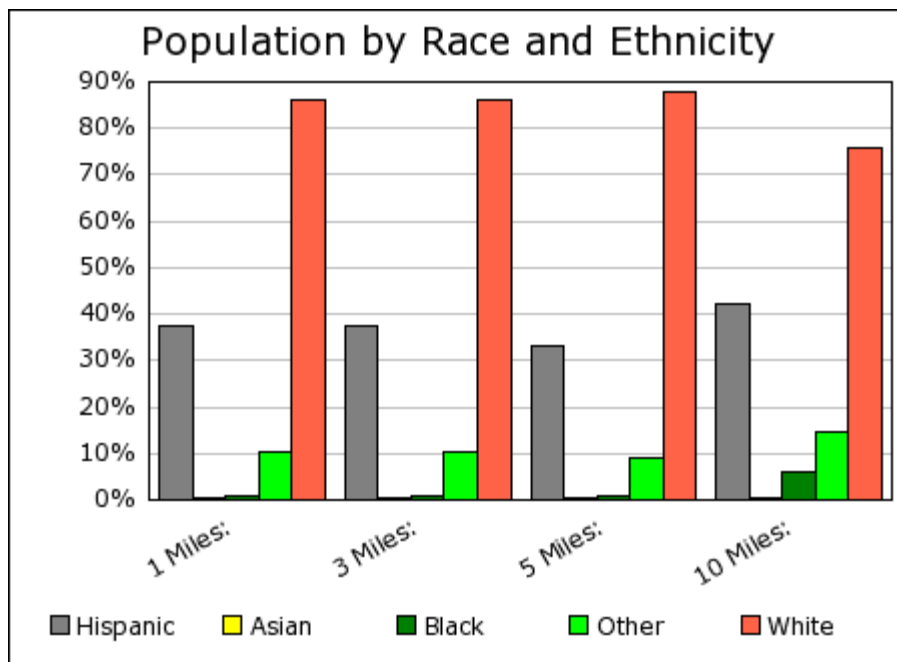


Percent of Households by Income



Median Age





Demographic Snapshot Comparison Report

	1 Miles:	3 Miles:	5 Miles:	10 Miles:
Population:				
Total Population	126	564	2,106	18,100
Male Population	55.8%	55.8%	55.1%	55.2%
Female Population	44.2%	44.2%	44.9%	44.8%
Median Age	32.1	32.1	33.9	32.9
Population Density (per sq. mi.)	40.1	19.9	26.8	57.6
Employees	5	79	189	5,463
Establishments	1	8	19	577
Income:				
Median HH Income	\$34,657	\$34,657	\$38,881	\$35,798

Per Capita Income	\$15,478	\$15,478	\$16,890	\$16,445
Average HH Income	\$48,879	\$48,879	\$52,107	\$51,960

Households:

Total Households	43	125	545	5,431
Average Household Size	2.69	4.19	3.63	3.22
Household Growth 1990 - 2000	87.4%	87.4%	60.6%	43.7%

Housing:

Owner Occupied Housing Units	63.0%	63.0%	68.8%	64.5%
Renter Occupied Housing Units	17.1%	17.1%	15.0%	20.8%
Vacant Housing Units	19.9%	19.9%	16.2%	14.7%

Race:

White	86.2%	86.2%	87.7%	76.0%
Black	0.9%	0.9%	0.8%	6.2%
American Indian, Eskimo, Aleut	0.8%	0.8%	0.6%	0.7%
Asian	0.5%	0.5%	0.4%	0.3%
Hawaiian or Pacific Islander	0.0%	0.0%	0.0%	0.0%
Other	9.5%	9.5%	8.5%	14.1%
Multirace	2.0%	2.0%	2.0%	2.7%

Ethnicity:

Hispanic	37.5%	37.5%	33.3%	42.3%
Non-Hispanic	62.5%	62.5%	66.7%	57.7%

Current year data is for the year **2005**, 5 year projected data is for the year **2010**.

Demographic data © 2005 by Experian/Applied Geographic Solutions.

Crime data © 2005 by Experian/Applied Geographic Solutions.

Traffic Count data © 2005 by GDT.

Properties data © 2005 by Property & Portfolio Research (PPR) Inc. and Dodge Pipeline All rights reserved.

The information presented herein, while not guaranteed, was obtained from sources we believe to be reliable. Neither STDB, Inc. nor the CCIM Institute assumes any liability for errors or omissions.



This site is brought to you by **STDB, Inc.** Powered by **SRC, LLC**.
© 2005 All Rights Reserved.