

Date: 11/22/05

Current Geography Selection: (3 Selected) 1,3,5 mile radii: 2938 Meadow Road, Lehigh Acres, FL 33971

Current Index Base: Entire US

Lat: 26.529569 Long: -81.605526  
 City: Lehigh Acres CDP Pop: 42,446  
 County: Lee County Pop: 523,512  
 Zip: 33936 Pop: 17,709

## 2000 US Census Overview Comparison Report

	1 Miles:	3 Miles:	5 Miles:
<b>Basic Variables</b>			
Population	8	941	6,343
Female Population	4	458	3,282
Female Percentage	50.0%	48.7%	51.7%
Male Population	4	483	3,061
Male Percentage	50.0%	51.3%	48.3%
Households	3	324	2,574
<b>Age: Total</b>			
Age 0 to 4	9.1%	7.3%	6.3%
Age 5 to 9	4.5%	5.8%	6.3%
Age 10 to 13	0.0%	5.5%	5.8%
Age 14 to 17	0.0%	4.8%	4.8%
Age 18 to 20	0.0%	3.1%	3.0%
Age 21 to 24	4.5%	4.9%	3.8%
Age 25 to 29	9.1%	5.2%	4.8%
Age 30 to 34	9.1%	5.7%	5.7%
Age 35 to 39	0.0%	5.7%	6.9%
Age 40 to 44	0.0%	7.5%	6.5%
Age 45 to 49	4.5%	6.0%	5.6%
Age 50 to 54	9.1%	6.0%	5.2%
Age 55 to 59	13.6%	5.6%	5.0%
Age 60 to 64	4.5%	6.3%	5.6%
Age 65 to 69	13.6%	6.9%	6.6%
Age 70 to 74	13.6%	5.1%	6.5%
Age 75 to 79	0.0%	4.3%	5.7%
Age 80 to 84	4.5%	2.6%	3.8%
Age 85 Plus	0.0%	1.7%	2.4%
Median Age	55.0	41.3	42.1
<b>Educational Attainment</b>			
No schooling completed	0.0%	0.0%	0.8%
School: PreK to 8	0.0%	4.3%	5.9%
School: 9th to 11th grade, no diploma	0.0%	10.1%	16.3%
School: High school graduate	61.1%	38.2%	37.2%
College: Associate degree	0.0%	7.4%	4.8%
College: Some college, no degree	33.3%	23.0%	22.4%
College: Bachelor's degree	5.6%	11.5%	7.5%
College: Graduate degree	0.0%	5.5%	5.0%
<b>Race &amp; Ethnicity</b>			
American Indian and Alaska Native Alone	0.0%	0.0%	0.1%
Asian Alone	0.0%	1.3%	1.0%
Black Alone	0.0%	4.8%	8.8%

Native Hawaiian and Other Pacific Islander Alone	0.0%	0.0%	0.0%
Some Other Race Alone	0.0%	6.9%	4.8%
Two or More Races	0.0%	1.5%	1.9%
White Alone	100.0%	85.5%	83.4%
Hispanic or Latino	27.3%	16.0%	13.6%
Not Hispanic or Latino	72.7%	84.0%	86.4%

### Income by Type: Household Income

Less than \$10,000	0.0%	3.5%	4.9%
\$10,000 to \$14,999	0.0%	4.7%	6.0%
\$15,000 to \$19,999	0.0%	7.6%	8.4%
\$20,000 to \$24,999	0.0%	6.2%	10.2%
\$25,000 to \$29,999	0.0%	9.7%	7.7%
\$30,000 to \$34,999	0.0%	8.1%	10.2%
\$35,000 to \$39,999	0.0%	7.8%	8.7%
\$40,000 to \$44,999	62.5%	9.6%	7.6%
\$45,000 to \$49,999	0.0%	6.8%	5.9%
\$50,000 to \$59,999	0.0%	9.3%	10.3%
\$60,000 to \$74,999	37.5%	12.6%	10.5%
\$75,000 to \$99,999	0.0%	10.4%	6.1%
\$100,000 to \$124,999	0.0%	1.6%	2.2%
\$125,000 to \$149,999	0.0%	1.2%	0.6%
\$150,000 to \$199,999	0.0%	0.1%	0.3%
\$200,000 or more	0.0%	0.8%	0.5%
Median Household Income	\$43,792	\$41,233	\$36,417
Per Capita Income	\$24,801	\$15,912	\$16,990
Average Household Income	\$66,137	\$46,214	\$41,867

### Size of Household

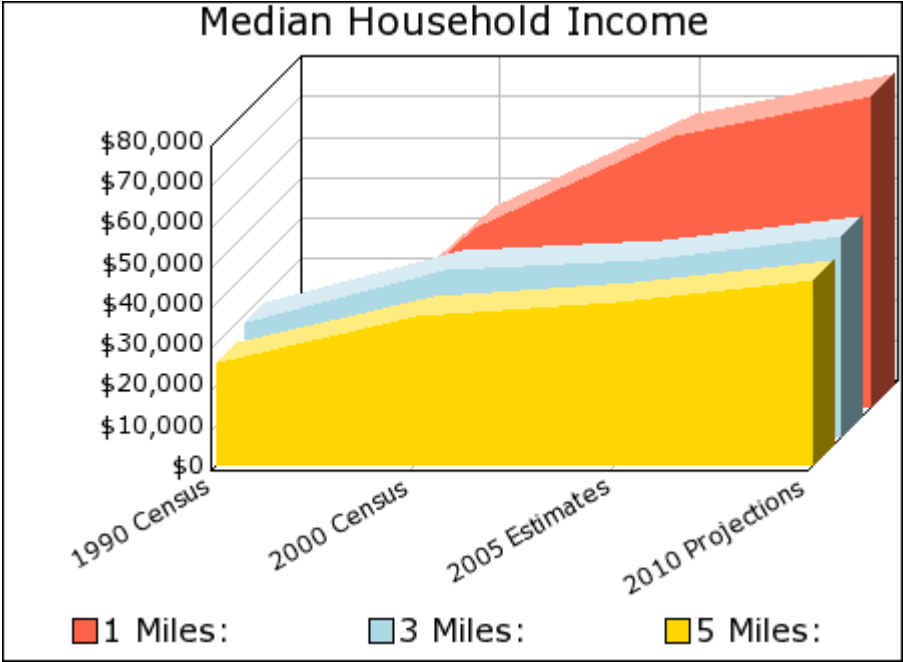
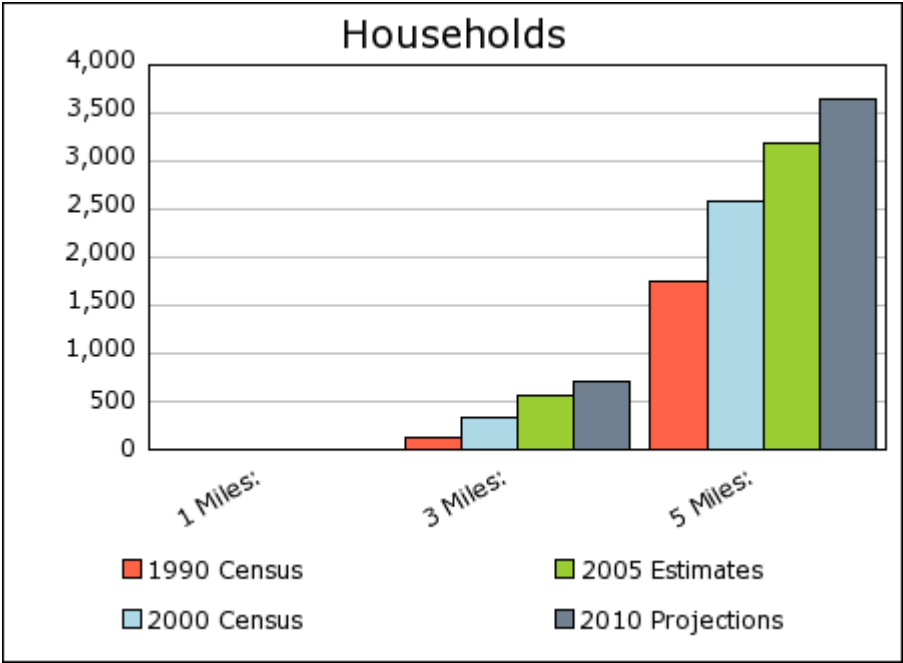
1 Person Households	0.0%	13.3%	21.7%
2 Person Households	75.0%	56.7%	41.7%
3 Person Households	0.0%	17.8%	15.5%
4 Person Households	0.0%	4.7%	11.7%
5 Person Households	0.0%	3.2%	5.3%
6 Person Households	0.0%	2.1%	1.4%
7 + Person Households	0.0%	0.9%	2.3%

### Housing Value & Rental Costs

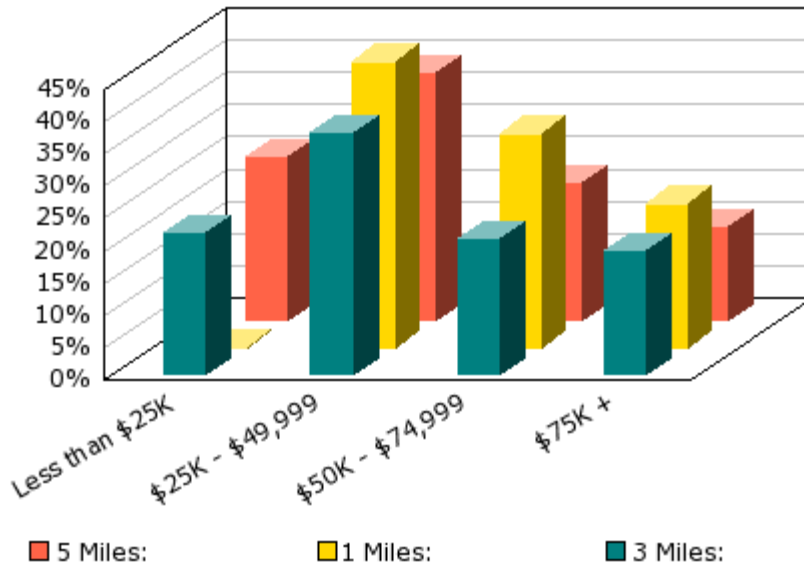
Median Owner-Occupied Housing Value	\$55,000	\$116,389	\$81,769
Average Monthly Contract Rent	N/A	\$335	\$503

### Housing Units - Year Moved In

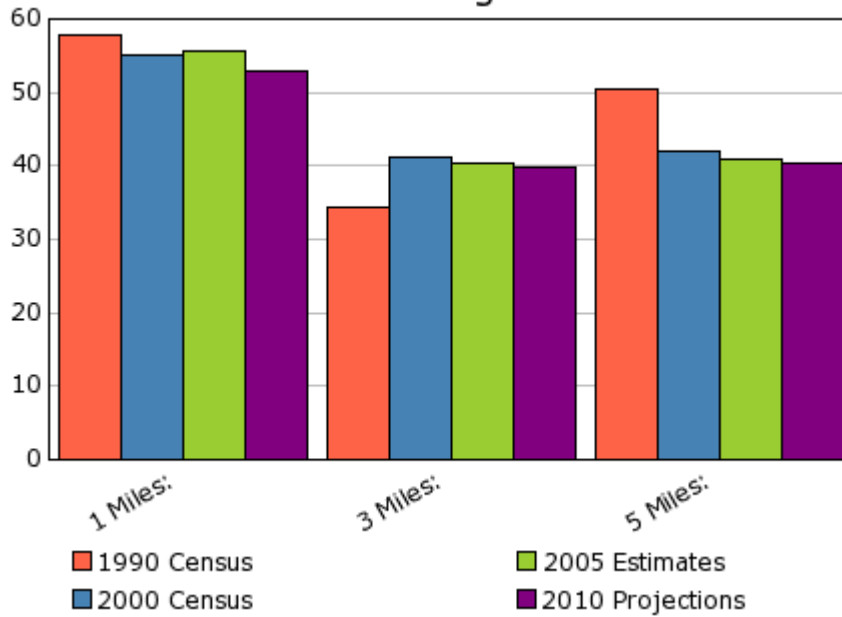
1969 or earlier	0.0%	0.8%	2.6%
1970 to 1979	0.0%	7.0%	8.0%
1980 to 1989	87.5%	19.9%	18.9%
1990 to 1994	0.0%	12.9%	21.6%
1995 to 1998	12.5%	39.3%	32.6%
1999 to 2000	0.0%	20.2%	16.4%
Housing Stability (5 Year)	35.7%	37.8%	42.6%
Housing Turnover (1 Year)	0.0%	17.7%	17.1%

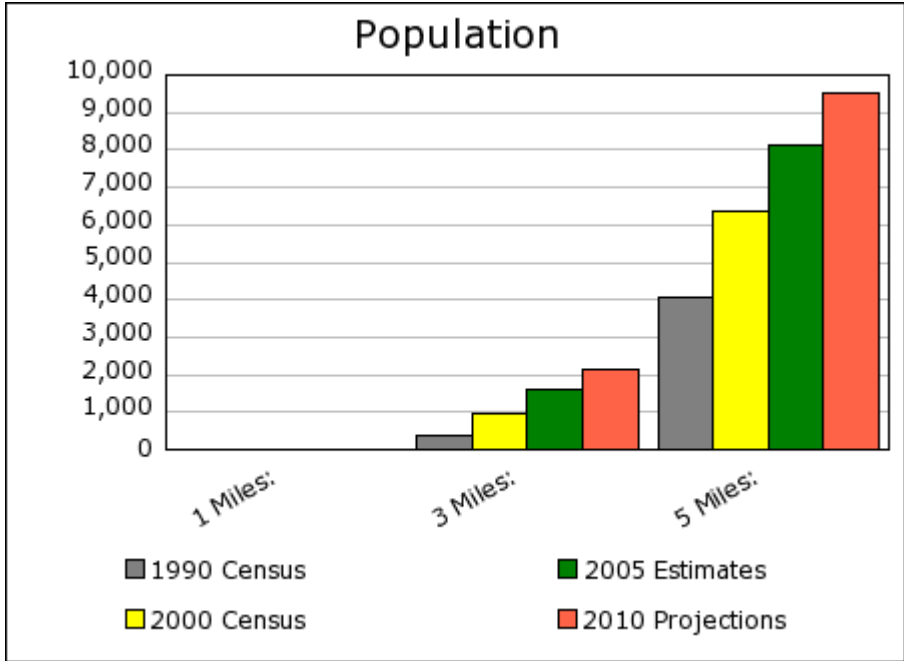
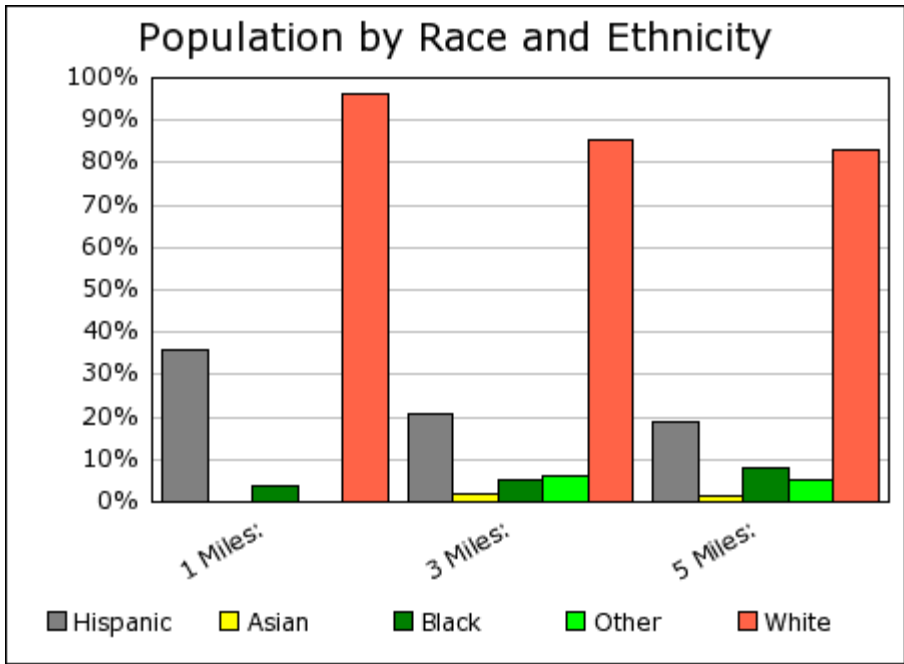


### Percent of Households by Income



### Median Age





## Demographic Snapshot Comparison Report

	1 Miles:	3 Miles:	5 Miles:
<b>Population:</b>			
Total Population	9	1,624	8,123
Male Population	52.0%	51.1%	49.0%
Female Population	48.0%	48.9%	51.0%
Median Age	55.7	40.4	40.8
Population Density (per sq. mi.)	2.9	57.5	103.4
Employees	2	627	2,570
Establishments	1	50	210
<b>Income:</b>			
Median HH Income	\$66,550	\$43,693	\$40,064

Per Capita Income	\$19,561	\$18,191	\$18,004
Average HH Income	\$54,337	\$48,450	\$46,062

**Households:**

Total Households	3	555	3,187
Average Household Size	2.69	2.89	2.54
Household Growth 1990 - 2000	700.0%	174.7%	46.7%

**Housing:**

Owner Occupied Housing Units	90.0%	68.0%	69.4%
Renter Occupied Housing Units	0.0%	14.4%	15.1%
Vacant Housing Units	10.0%	17.5%	15.5%

**Race:**

White	96.0%	85.2%	83.2%
Black	4.0%	5.4%	8.1%
American Indian, Eskimo, Aleut	0.0%	0.3%	0.7%
Asian	0.0%	1.8%	1.5%
Hawaiian or Pacific Islander	0.0%	0.1%	0.0%
Other	0.0%	5.7%	4.6%
Multirace	0.0%	1.6%	1.8%

**Ethnicity:**

Hispanic	36.0%	20.9%	18.8%
Non-Hispanic	64.0%	79.1%	81.2%

Current year data is for the year **2005**, 5 year projected data is for the year **2010**.

Demographic data © 2005 by Experian/Applied Geographic Solutions.

Crime data © 2005 by Experian/Applied Geographic Solutions.

The retail centers data used in this site is licensed by National Research Bureau (NRB).

Traffic Count data © 2005 by GDT.

Properties data © 2005 by Property & Portfolio Research (PPR) Inc. and Dodge Pipeline All rights reserved.

The information presented herein, while not guaranteed, was obtained from sources we believe to be reliable. Neither STDB, Inc. nor the CCIM Institute assumes any liability for errors or omissions.



This site is brought to you by **STDB, Inc.** Powered by **SRC, LLC**.  
© 2005 All Rights Reserved.