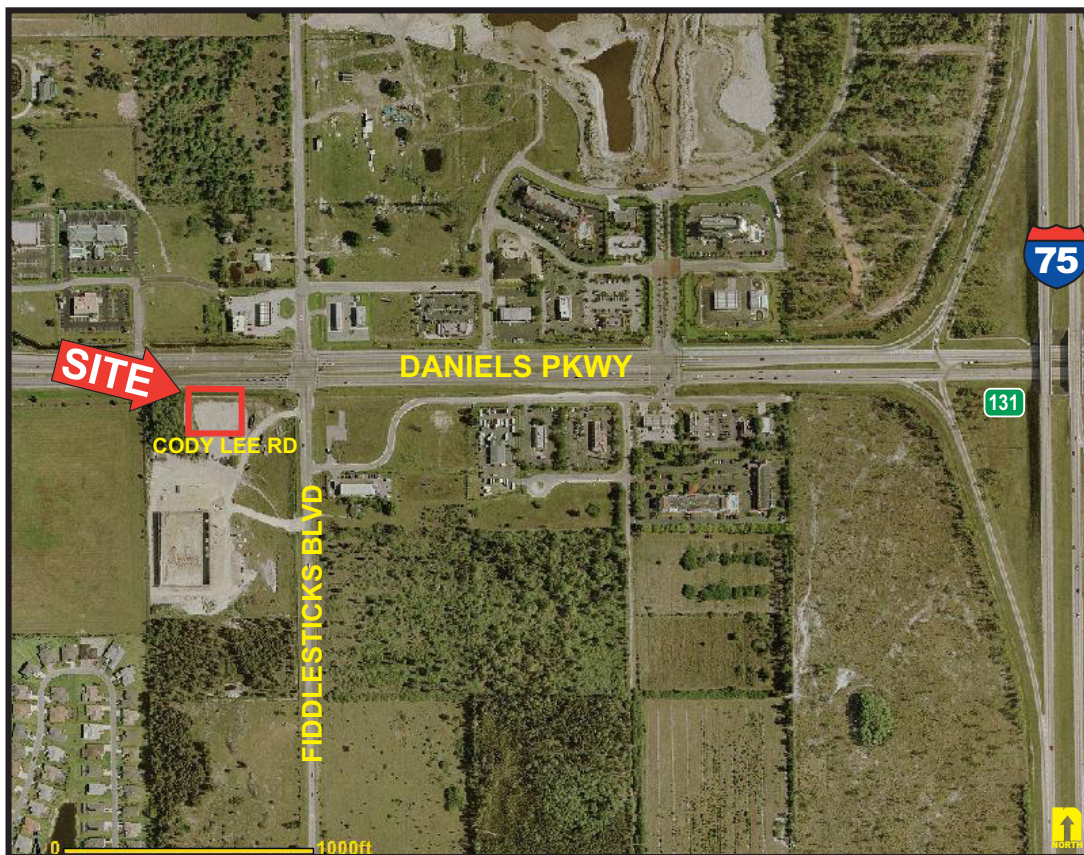


Commercial Outparcel 1.2± Acres on Daniels Pkwy



LOCATION: 9011 Cody Lee Road, Fort Myers, FL 33912

STRAP #: 22-45-25-12-0000C.0000

ZONING: Commercial

TRAFFIC COUNTS: 53,700 (AADT 2004)

SIZE: 1.2± Acres

UTILITIES: Water & Sewer

DIMENSIONS: 204± Ft. frontage along Daniels Parkway and 254± Ft. of depth

PRICE: \$995,000.00

COMMENTS: High visibility & easy access location on Daniels Parkway just off I-75. Located next to the Publix Shopping Center and adjacent to Colonial Bank. Tremendous growth area with 10,000 new residential units planned for the corridor. Plans underway for a new 4-6 lane north-south road connecting Daniels Parkway to Alico Road.

CONTACT: TOM WOODYARD
FRANK D'ALESSANDRO

E-MAIL: twoodyard@dw-cr.com

7800 University Pointe Drive
Suite 100, Second Floor
Fort Myers, FL 33907
Phone: (239) 425-6000
Fax: (239) 425-6001
www.DW-CR.com

9011 Cody Lee Road, Fort Myers, FL 33912

