

**Date:** January 27, 2005**Current Geography Selection:** 1, 3, 5 mile radii: 3550 COLONIAL BLVD, FORT MYERS, FL 33912**Latitude:** 26.597288 **Longitude:** -81.840730**City:** Fort Myers city **Pop:** 51,342**County:** Lee County **Pop:** 491,083**Zip:** 33912 Fort Myers **Pop:** 37,416

## 2000 US Census Overview Comparison Report

	1 Miles:	3 Miles:	5 Miles:
<b>Basic Variables</b>			
Population	2,008	38,058	90,594
Female Population	909	19,152	46,202
Female Percentage	45.3%	50.3%	51.0%
Male Population	1,099	18,905	44,393
Male Percentage	54.8%	49.7%	49.0%
Households	742	15,592	37,335
<b>Age: Total</b>			
Age 0 to 4	6.9%	7.6%	6.9%
Age 5 to 9	5.8%	6.8%	6.5%
Age 10 to 13	3.9%	4.9%	5.1%
Age 14 to 17	4.9%	4.8%	4.9%
Age 18 to 20	6.7%	4.4%	3.9%
Age 21 to 24	10.0%	6.8%	5.5%
Age 25 to 29	12.3%	8.8%	7.4%
Age 30 to 34	9.8%	7.8%	6.9%
Age 35 to 39	8.2%	8.0%	7.3%
Age 40 to 44	7.4%	7.2%	7.0%
Age 45 to 49	5.4%	6.1%	6.3%
Age 50 to 54	4.7%	5.0%	5.6%
Age 55 to 59	3.4%	3.9%	4.5%
Age 60 to 64	2.5%	3.3%	4.0%
Age 65 to 69	2.4%	3.3%	4.0%
Age 70 to 74	2.1%	3.5%	4.3%
Age 75 to 79	1.6%	2.8%	3.8%
Age 80 to 84	1.0%	2.4%	3.0%
Age 85 Plus	1.1%	2.8%	3.1%
Median Age	29.9	33.8	37.0
<b>Educational Attainment</b>			
No schooling completed	1.5%	1.8%	1.7%
School: PreK to 8	3.6%	6.1%	6.3%
School: 9th to 11th grade, no diploma	12.9%	16.7%	15.4%
School: High school graduate	24.7%	30.3%	27.2%
College: Associate degree	8.2%	6.5%	6.0%
College: Some college, no degree	25.3%	20.5%	20.6%
College: Bachelor's degree	16.0%	12.3%	14.9%
College: Graduate degree	7.9%	5.8%	8.0%
<b>Race &amp; Ethnicity</b>			
American Indian and Alaska Native Alone	0.3%	0.3%	0.3%
Asian Alone	1.8%	1.3%	1.1%

Black Alone	15.0%	25.6%	22.6%
Native Hawaiian and Other Pacific Islander Alone	0.0%	0.1%	0.1%
Some Other Race Alone	4.2%	4.0%	4.4%
Two or More Races	2.4%	3.0%	2.4%
White Alone	76.4%	65.8%	69.2%
Hispanic or Latino	12.3%	12.9%	12.6%
Not Hispanic or Latino	87.7%	87.1%	87.4%

### Income by Type: Household Income

Less than \$10,000	6.9%	12.1%	11.5%
\$10,000 to \$14,999	5.0%	6.8%	7.2%
\$15,000 to \$19,999	8.6%	9.4%	8.0%
\$20,000 to \$24,999	9.7%	9.9%	8.6%
\$25,000 to \$29,999	8.6%	9.1%	8.1%
\$30,000 to \$34,999	10.3%	7.9%	7.2%
\$35,000 to \$39,999	7.5%	7.4%	6.5%
\$40,000 to \$44,999	9.2%	6.3%	5.8%
\$45,000 to \$49,999	4.7%	5.0%	5.1%
\$50,000 to \$59,999	9.2%	7.3%	8.1%
\$60,000 to \$74,999	7.6%	7.7%	8.3%
\$75,000 to \$99,999	8.4%	6.2%	7.0%
\$100,000 to \$124,999	1.8%	2.2%	3.6%
\$125,000 to \$149,999	0.9%	0.9%	1.8%
\$150,000 to \$199,999	0.4%	0.7%	1.4%
\$200,000 or more	1.4%	1.0%	2.1%
Median Household Income	\$35,553	\$31,584	\$34,676
Per Capita Income	\$16,173	\$16,732	\$20,114
Average Household Income	\$43,772	\$40,841	\$48,807

### Size of Household

1 Person Households	33.4%	32.0%	31.9%
2 Person Households	36.6%	33.9%	35.8%
3 Person Households	16.0%	16.1%	14.3%
4 Person Households	9.9%	10.0%	9.9%
5 Person Households	2.7%	5.2%	5.0%
6 Person Households	1.0%	1.9%	1.9%
7 + Person Households	0.5%	1.4%	1.5%

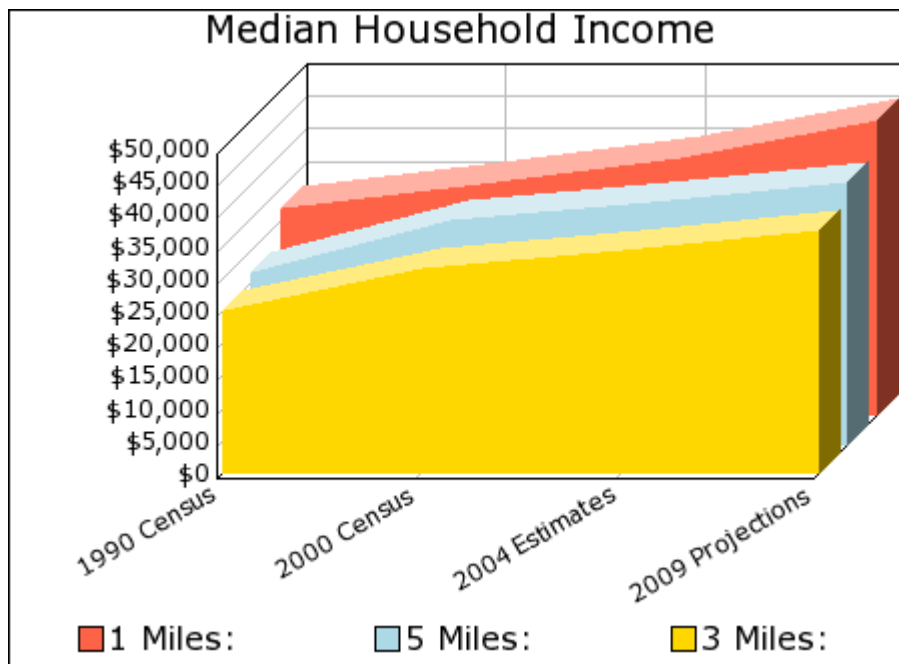
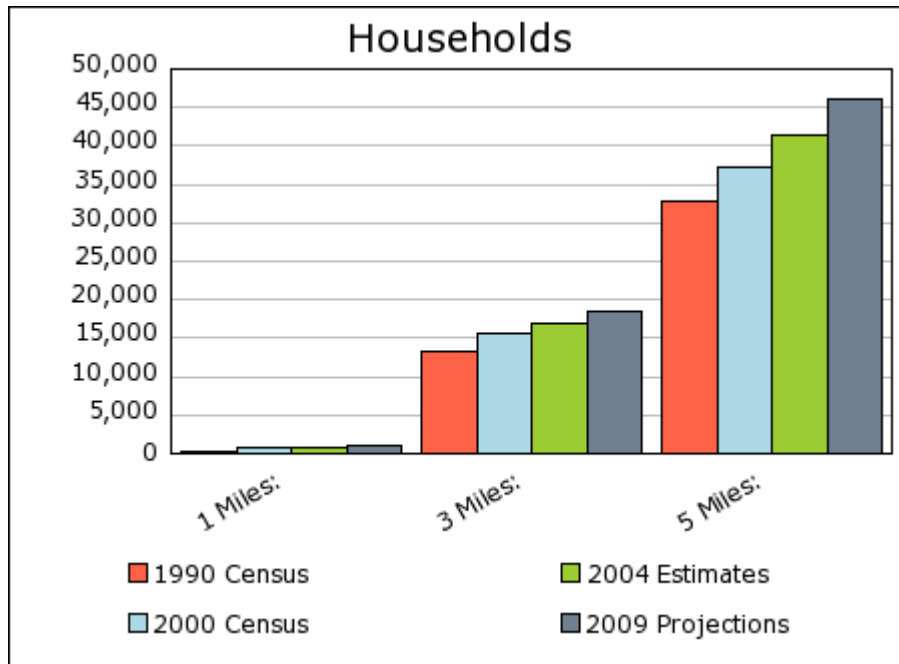
### Housing Value & Rental Costs

Median Owner-Occupied Housing Value	\$143,160	\$78,995	\$90,986
Average Monthly Contract Rent	\$645	\$559	\$567

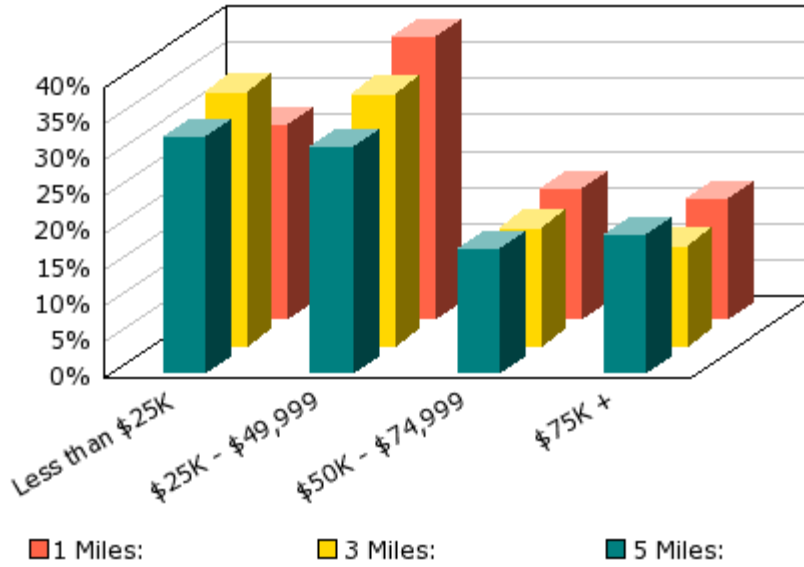
### Housing Units - Year Moved In

1969 or earlier	1.6%	4.9%	3.9%
1970 to 1979	0.4%	5.2%	6.4%
1980 to 1989	5.9%	11.6%	14.4%
1990 to 1994	5.6%	13.1%	14.8%
1995 to 1998	22.3%	28.3%	29.5%
1999 to 2000	64.3%	37.0%	31.1%
Housing Stability (5 Year)	16.5%	33.2%	37.1%
Housing Turnover (1 Year)	61.7%	37.0%	31.2%

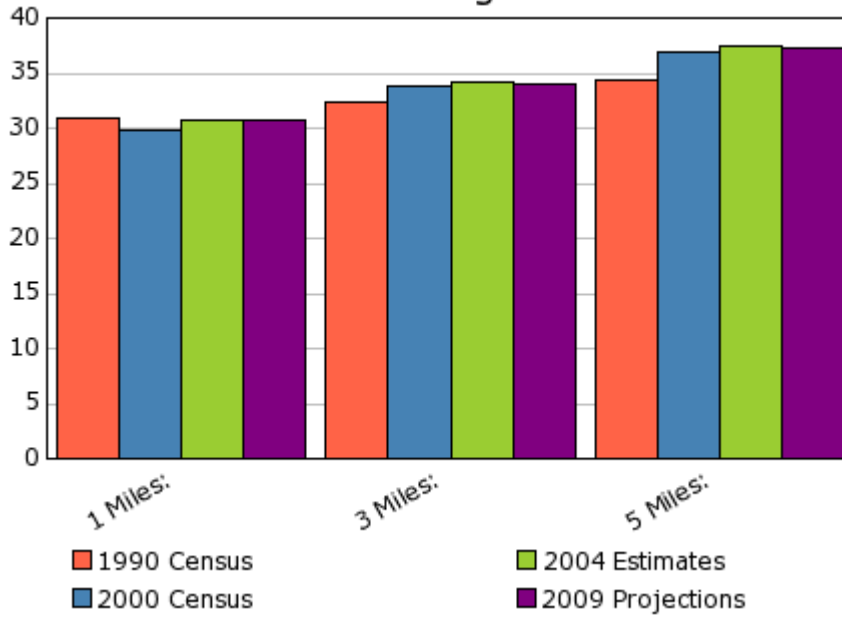
# Demographic Snapshot Comparison Report with Charts

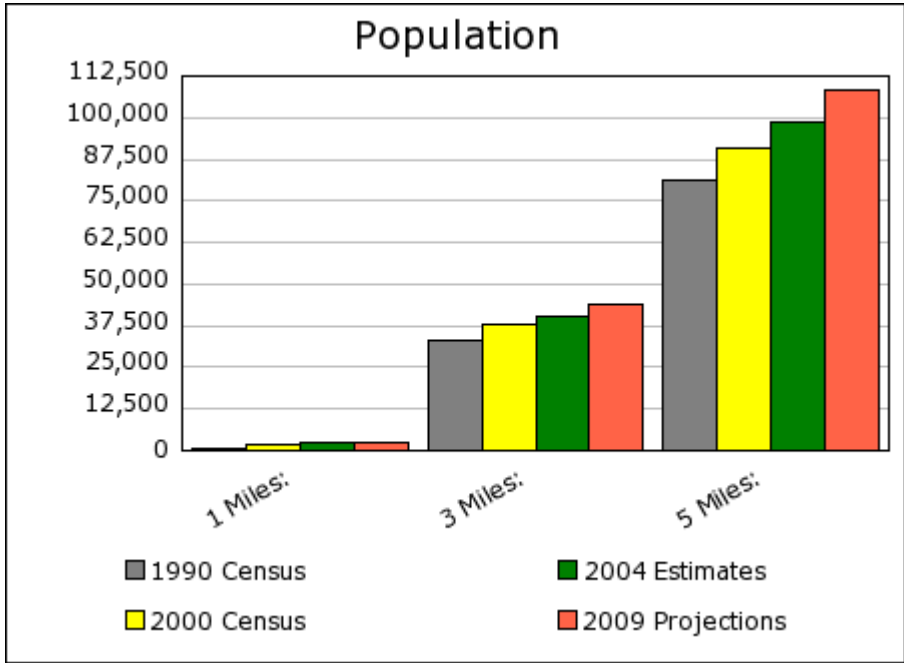
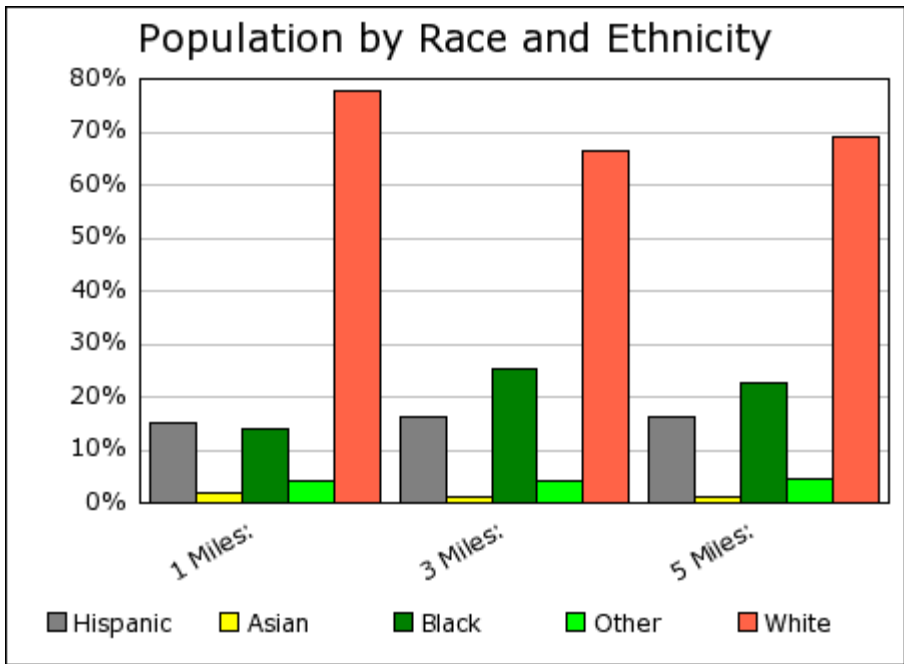


### Percent of Households by Income



### Median Age





## Demographic Snapshot Comparison Report

	1 Miles:	3 Miles:	5 Miles:
<b>Population:</b>			
Total Population	2,311	40,473	98,444
Male Population	54.5%	49.9%	49.2%
Female Population	45.5%	50.1%	50.8%
Median Age	30.6	34.1	37.4
Population Density (per sq. mi.)	735.7	1,431.4	1,253.4
Employees	3,357	46,694	92,644
Establishments	308	4,199	8,746
<b>Income:</b>			
Median HH Income	\$39,393	\$34,135	\$37,316

Per Capita Income	\$21,780	\$18,802	\$21,961
Average HH Income	\$46,608	\$43,803	\$51,411
<b>Households:</b>			
Total Households	852	16,832	41,320
Average Household Size	2.40	2.31	2.31
Household Growth 1990 - 2000	419.3%	16.4%	13.8%
<b>Housing:</b>			
Owner Occupied Housing Units	25.0%	39.1%	48.4%
Renter Occupied Housing Units	61.5%	48.7%	38.2%
Vacant Housing Units	13.5%	12.2%	13.4%
<b>Race:</b>			
White	77.9%	66.3%	69.1%
Black	14.1%	25.2%	22.8%
American Indian, Eskimo, Aleut	0.3%	0.3%	0.3%
Asian	1.8%	1.3%	1.1%
Hawaiian or Pacific Islander	0.0%	0.1%	0.1%
Other	3.8%	3.9%	4.3%
Multirace	2.2%	2.9%	2.3%
<b>Ethnicity:</b>			
Hispanic	15.0%	16.3%	16.1%
Non-Hispanic	85.0%	83.7%	84.0%

Current year data is for the year **2004**, 5 year projected data is for the year **2009**.

Demographic data © 2004 by Experian/Applied Geographic Solutions.

Crime data © 2004 by Experian/Applied Geographic Solutions. Traffic Count data © 2004 by GDT.

The retail centers data used in this site is licensed by National Research Bureau (NRB).

Properties data © 2004 by Property & Portfolio Research (PPR) Inc. and Dodge Pipeline All rights reserved.

The information presented herein, while not guaranteed, was obtained from sources we believe to be reliable.  
Neither STDB, Inc. nor the CCIM Institute assumes any liability for errors or omissions.



This site is brought to you by **STDB, Inc.** Powered by **SRC, LLC**.  
© 2004 All Rights Reserved.