

FOR SALE
22.14± Acres / Alva



LOCATION: 18030 Parkinson Rd., Alva, FL 33920

STRAP #: 15-43-27-00-00008.0000

ZONING: AG-2 Agricultural

SIZE: 22.14± Acres

PRICE: \$895,000

[CLICK HERE FOR A VIRTUAL TOUR.](#)

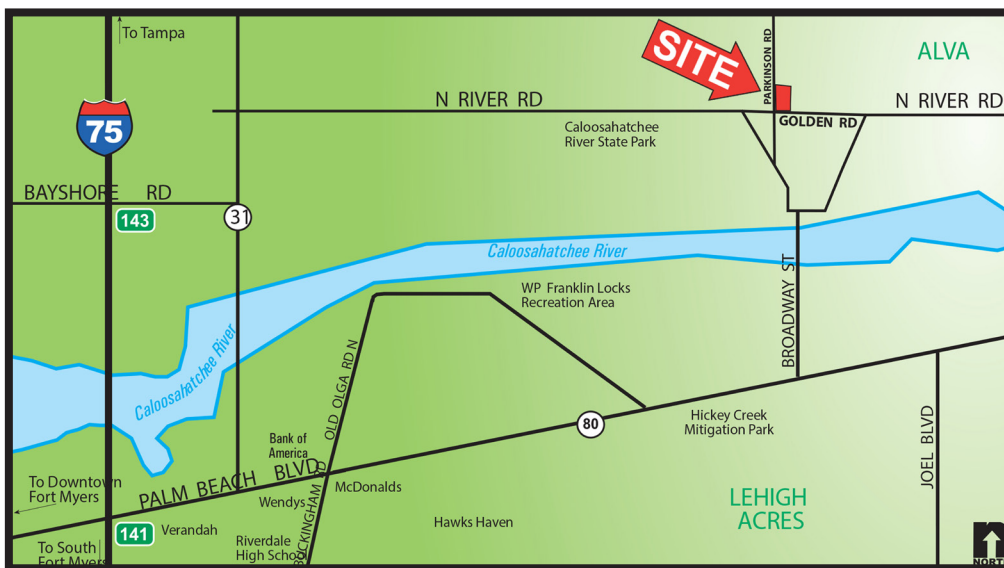
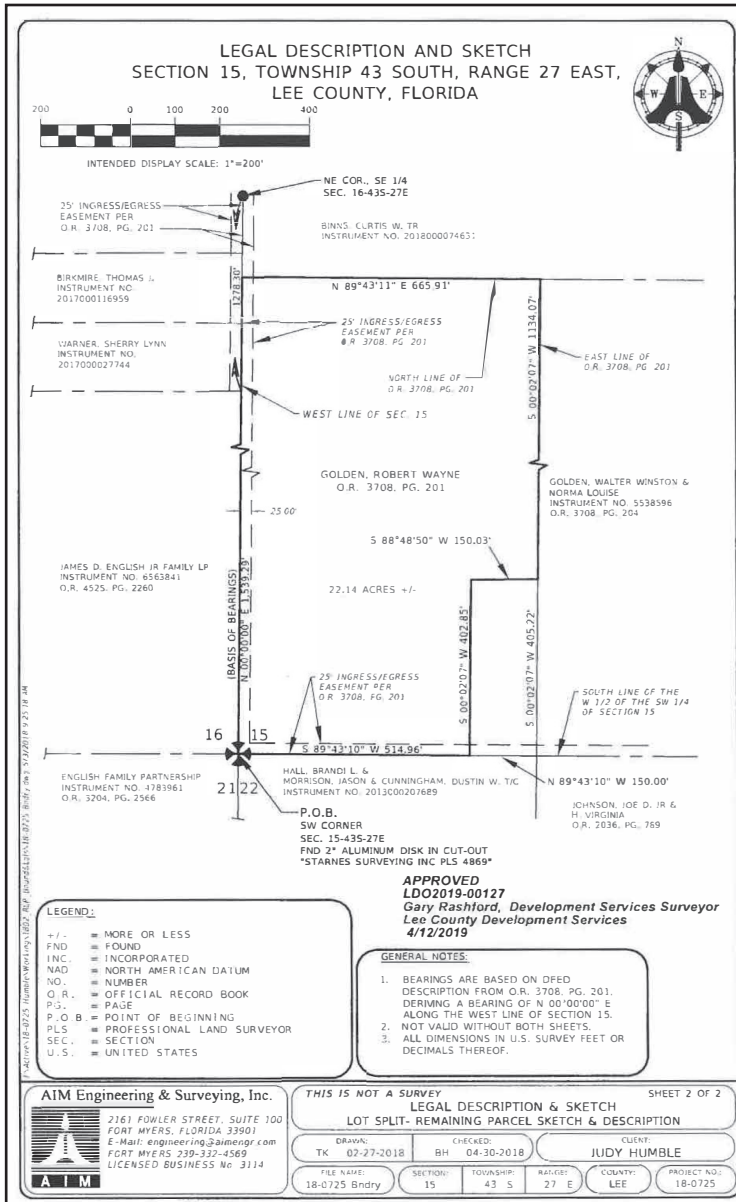
COMMENTS:

22.14± acres, fenced and rectangular in shape, located on a paved, two lane road that dead ends for limited neighborhood traffic. The property has two lakes and mostly pasture. Ideal property for country estate, ranchette, hobby farming, equestrienne center or agribusiness, nursery, sod and organic farming. Well & septic with phone, electric and internet available. The property is located with quick access to SR 80 for convenient shopping, schools, banks, and churches.

CONTACT: TOM WOODYARD
PHONE: (239) 425-6011
E-MAIL: twoodyard@wa-cr.com

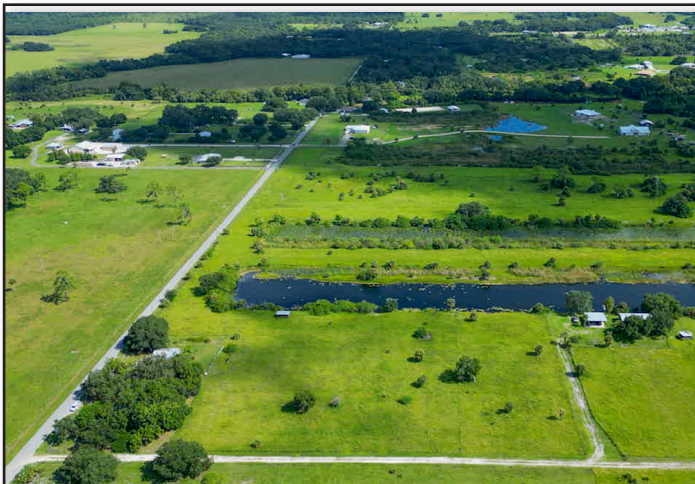
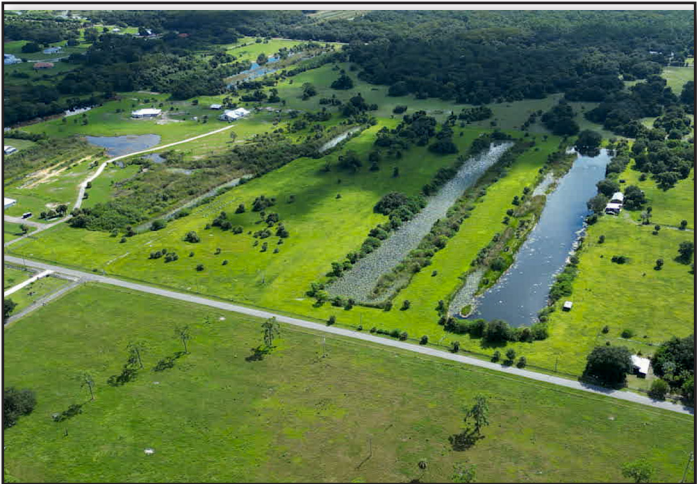
The statements and figures presented herein, while not guaranteed, are secured from sources we believe authoritative. Subject to prior sale, lease, withdrawal and price change without notice.

18030 Parkinson Rd., Alva, FL 33920



The statements and figures presented herein, while not guaranteed, are secured from sources we believe authoritative. Subject to prior sale, lease, withdrawal and price change without notice.

18030 Parkinson Rd., Alva, FL 33920



The statements and figures presented herein, while not guaranteed, are secured from sources we believe authoritative. Subject to prior sale, lease, withdrawal and price change without notice.