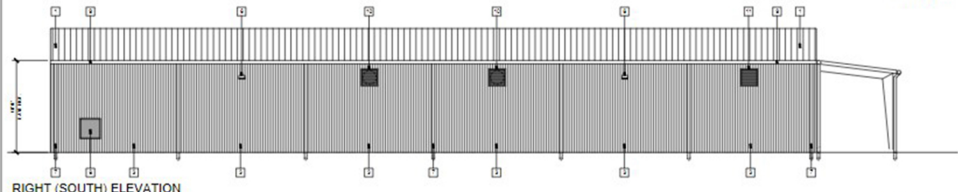


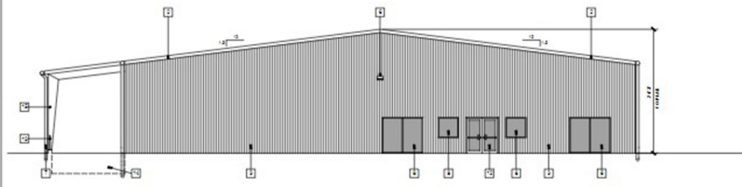
LEFT (NORTH) ELEVATION

SCALE: 1/4" = 1'-0"



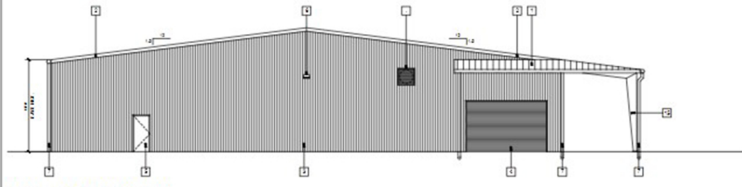
RIGHT (SOUTH) ELEVATION

SCALE: 1/4" = 1'-0"



FRONT (WEST) ELEVATION

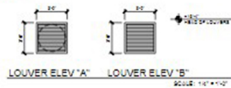
SCALE: 1/4" = 1'-0"



REAR (EAST) ELEVATION

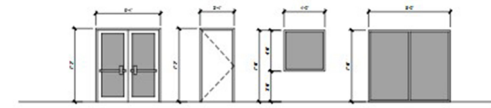
**NOTES/REVISIONS:**

- 1) PROVIDE 18" SLIDE OVER SELECT COLOR 2000 POLYURETHANE DOOR FINISH FINISHED TO STEEL BUILDING AND EXTERIOR FINISH SHOWN.
- 2) PROVIDE 18" CONTINUOUS INSULATED METAL SLIP FINISH.
- 3) 24 GAUGE OVER SELECT FINISHED COLOR STEEL WALL FINISHING WITH 1/2" INSULATION. PROVIDE EXTERIOR SHIP DRILLINGS FOR ADDITIONAL INFORMATION.
- 4) 24 GAUGE OVER SELECT COLOR 2000 POLYURETHANE DOOR FINISH FINISHED TO STEEL BUILDING AND EXTERIOR FINISH SHOWN.
- 5) 24 GAUGE OVER SELECT COLOR 2000 POLYURETHANE DOOR FINISH FINISHED TO STEEL BUILDING AND EXTERIOR FINISH SHOWN.
- 6) 24 GAUGE OVER SELECT COLOR 2000 POLYURETHANE DOOR FINISH FINISHED TO STEEL BUILDING AND EXTERIOR FINISH SHOWN.
- 7) 24 GAUGE OVER SELECT COLOR 2000 POLYURETHANE DOOR FINISH FINISHED TO STEEL BUILDING AND EXTERIOR FINISH SHOWN.
- 8) 24 GAUGE OVER SELECT COLOR 2000 POLYURETHANE DOOR FINISH FINISHED TO STEEL BUILDING AND EXTERIOR FINISH SHOWN.
- 9) 24 GAUGE OVER SELECT COLOR 2000 POLYURETHANE DOOR FINISH FINISHED TO STEEL BUILDING AND EXTERIOR FINISH SHOWN.
- 10) 24 GAUGE OVER SELECT COLOR 2000 POLYURETHANE DOOR FINISH FINISHED TO STEEL BUILDING AND EXTERIOR FINISH SHOWN.
- 11) 24 GAUGE OVER SELECT COLOR 2000 POLYURETHANE DOOR FINISH FINISHED TO STEEL BUILDING AND EXTERIOR FINISH SHOWN.
- 12) 24 GAUGE OVER SELECT COLOR 2000 POLYURETHANE DOOR FINISH FINISHED TO STEEL BUILDING AND EXTERIOR FINISH SHOWN.



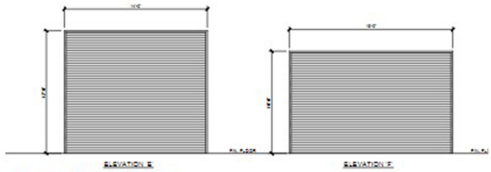
DOOR / GLASS ELEVATIONS

SCALE: 1/4" = 1'-0"



DOOR / GLASS ELEVATIONS

SCALE: 1/4" = 1'-0"



DOOR / GLASS ELEVATIONS

SCALE: 1/4" = 1'-0"