

9.94± Acres FOR SALE Alva, FL.



LOCATION: 19301 Witts End, Alva, FL. 33920

STRAP #: 32-43-27-00-00001.0190

ZONING: A-2 (Agricultural)

2013 TAXES: \$ 410.44

SIZE: 9.94± Acres

LAND DIMENSIONS: 463'± Frontage (Witts End)
861'± Depth

PRICE: \$ 175,000

COMMENTS: 9.94± Acres of Land in Alva, Florida. Single family, deed restricted. One home per site. Located just south of State Road 80 and east of I-75, exit 141.

CONTACT: J. FRED BURSON
PHONE: (239) 425-6024
E-MAIL: fburson@wa-cr.com

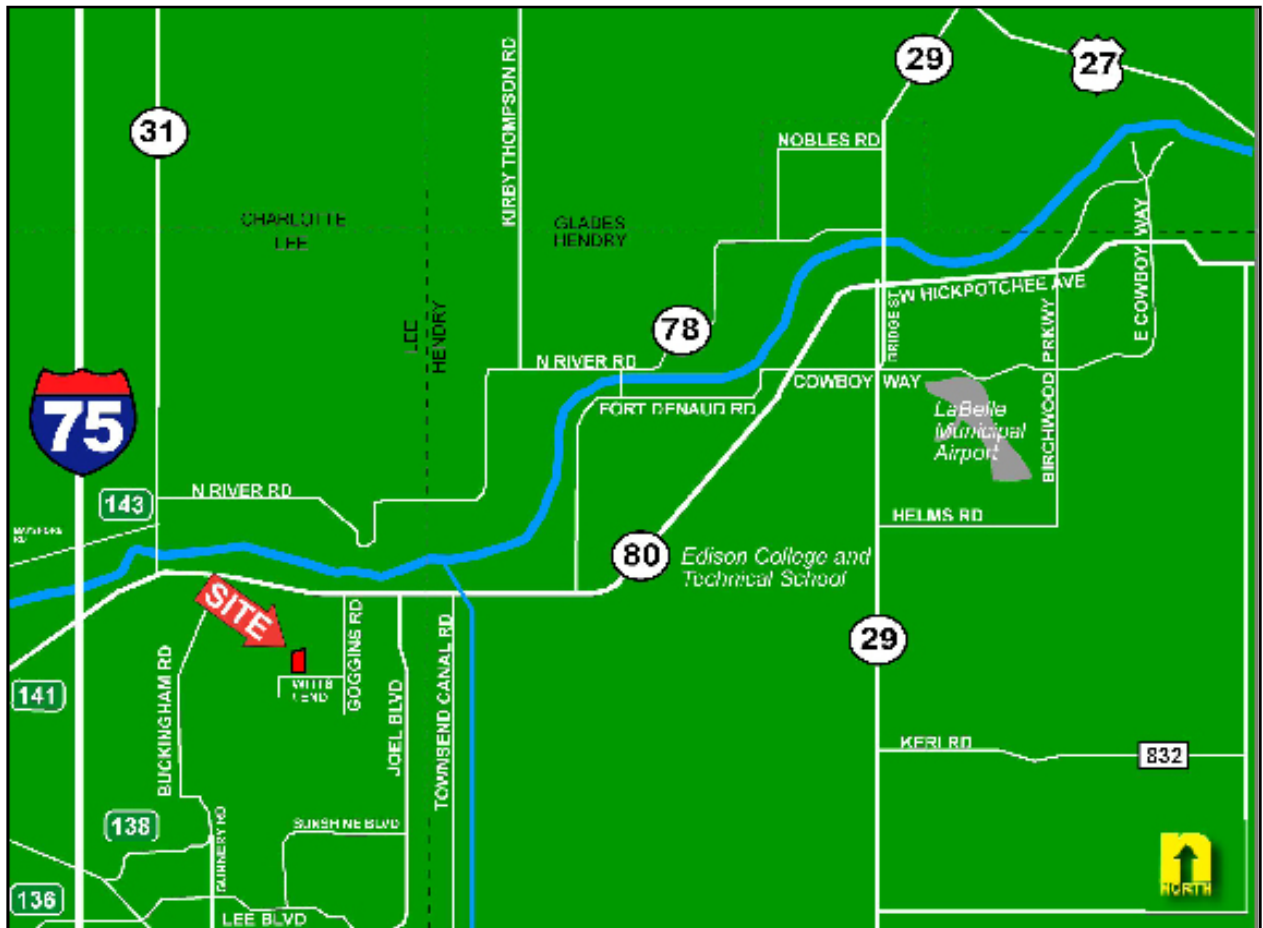
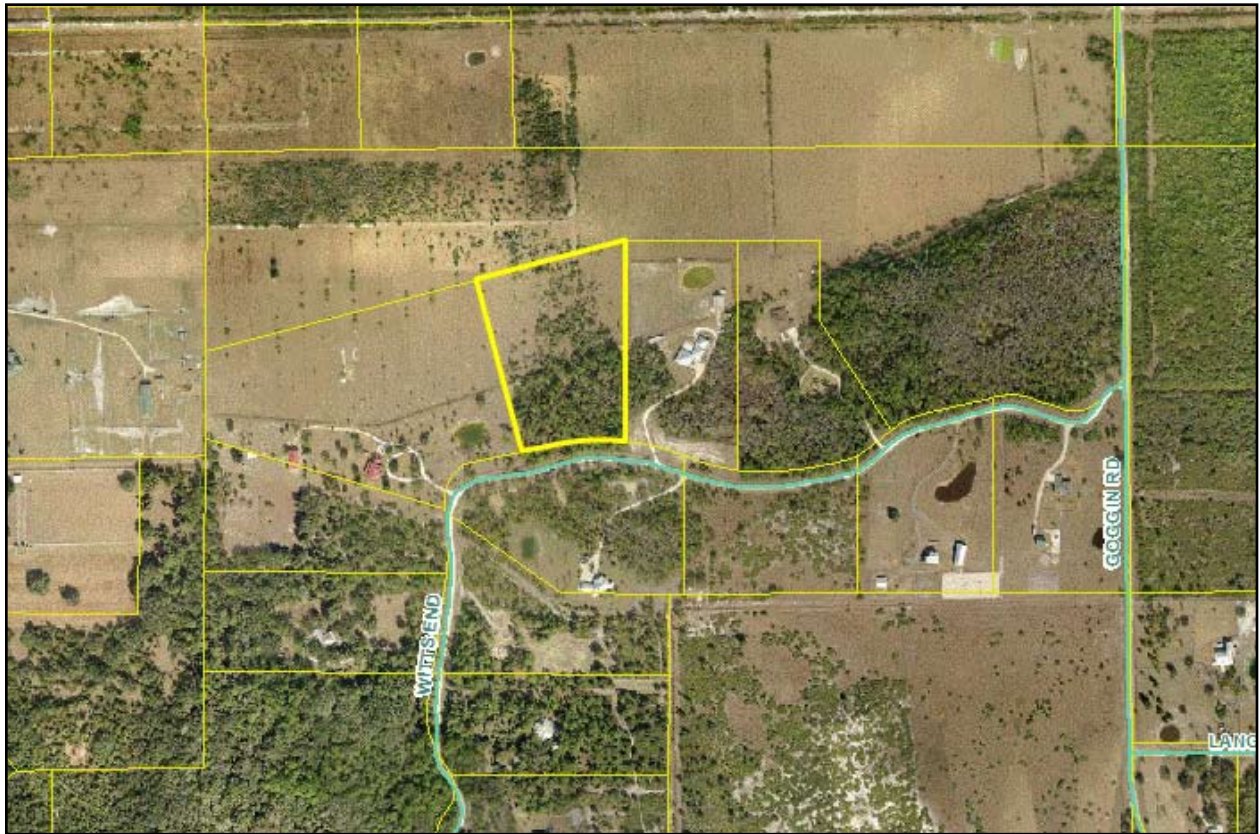
The statements and figures presented herein, while not guaranteed, are secured from sources we believe authoritative. Subject to prior sale, lease, withdrawal and price change without notice.

Pinebrook Park, 12995 South Cleveland Ave., Suite 219, Fort Myers, FL 33907 • P.O. Box 60151, Fort Myers, FL 33906

002194 / 6-25-14

(239) 425-6000 • (239) 425-6001 Fax • www.WA-CR.com

19301 Witts End, Alva, FL. 33920



The statements and figures presented herein, while not guaranteed, are secured from sources we believe authoritative. Subject to prior sale, lease, withdrawal and price change without notice.