

Medical Office FOR LEASE Riverwalk Professional Center



LOCATION: 12600 Creekside Lane, Unit 5, Fort Myers, FL 33919

STRAP #: 15-45-24-39-00000.0080

ZONING: CC - Community Commercial

SIZE: Unit 5: 2,116± Sq. Ft.

PRICE: \$ 15.00 Per Sq. Ft. + \$ 5.45 Per Sq. Ft. CAM

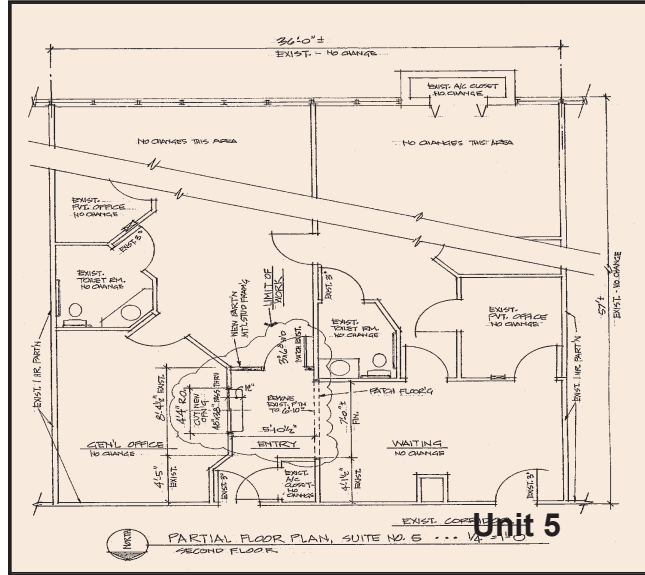
COMMENTS: Fully Built-Out Medical Offices ready to occupy immediately. Unit 5 is 2,116± Sq. Ft. with 3 exam rooms, waiting area, private offices and room to grow. Lee Memorial diagnostic centers are located in the building for easy patient access. Units are located in the prestigious Riverwalk Professional Center just off College Parkway. Affordable rent, no build-out costs or impact fees is a winning combination. Landlord is willing to work with any qualified tenant! Call today for a showing!

CONTACT: TOM WOODYARD
PHONE: (239) 425-6011
E-MAIL: twodyard@wa-cr.com

CONTACT: TODD HOLMAN
PHONE: (239) 425-6014
E-MAIL: tholman@wa-cr.com

The statements and figures presented herein, while not guaranteed, are secured from sources we believe authoritative. Subject to prior sale, lease, withdrawal and price change without notice.

12600 Creekside Lane, Fort Myers, FL 33919



The statements and figures presented herein, while not guaranteed, are secured from sources we believe authoritative. Subject to prior sale, lease, withdrawal and price change without notice.