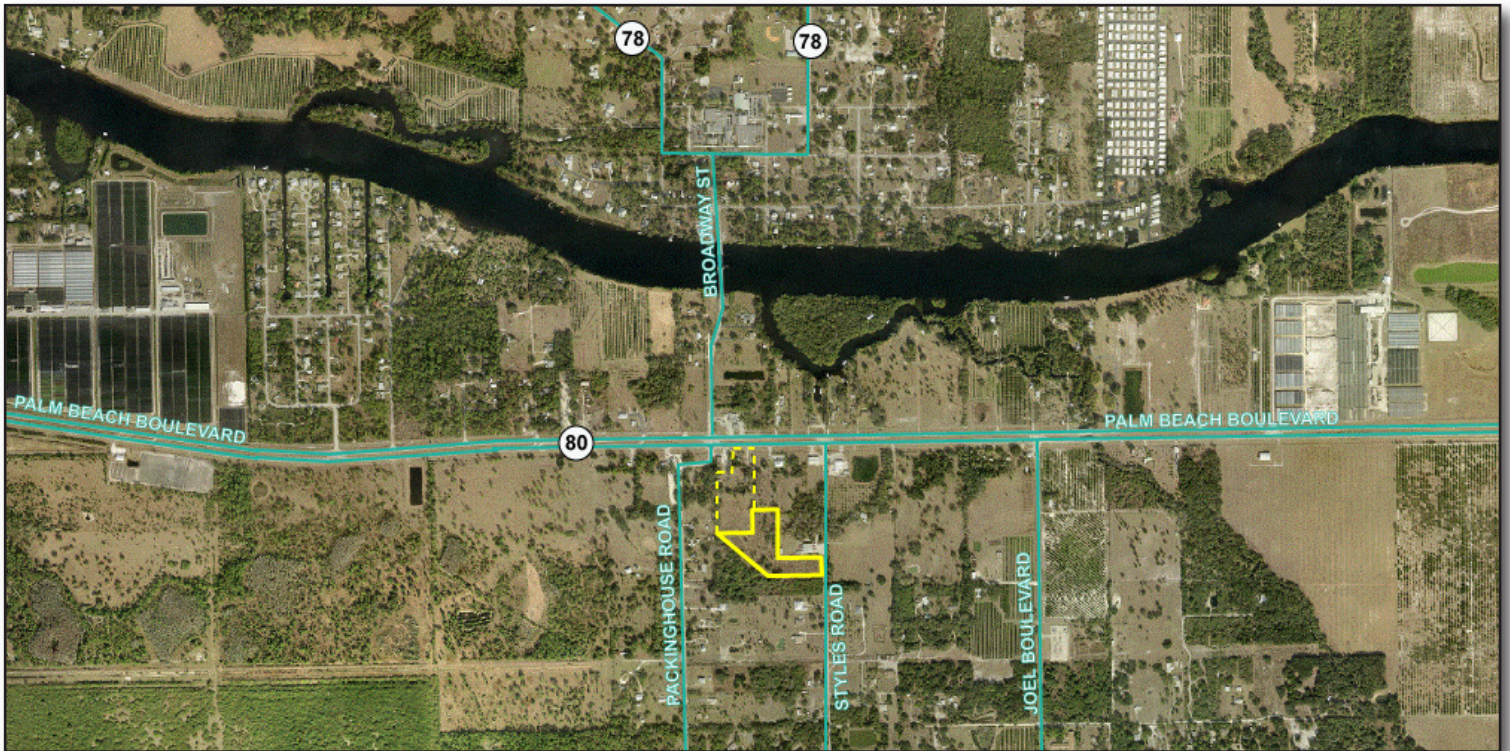


5.74± Acres Residential Land Alva, FL.



LOCATION: Styles Road, Alva, FL. 33920

ZONING: RS-1 (Residential)

**FUTURE
LAND USE:** Moderate Density Residential

SIZE: 5.74± Acres

FRONTAGE: 160'± (Styles Road)

TAXES: \$ 1,098 (2011)

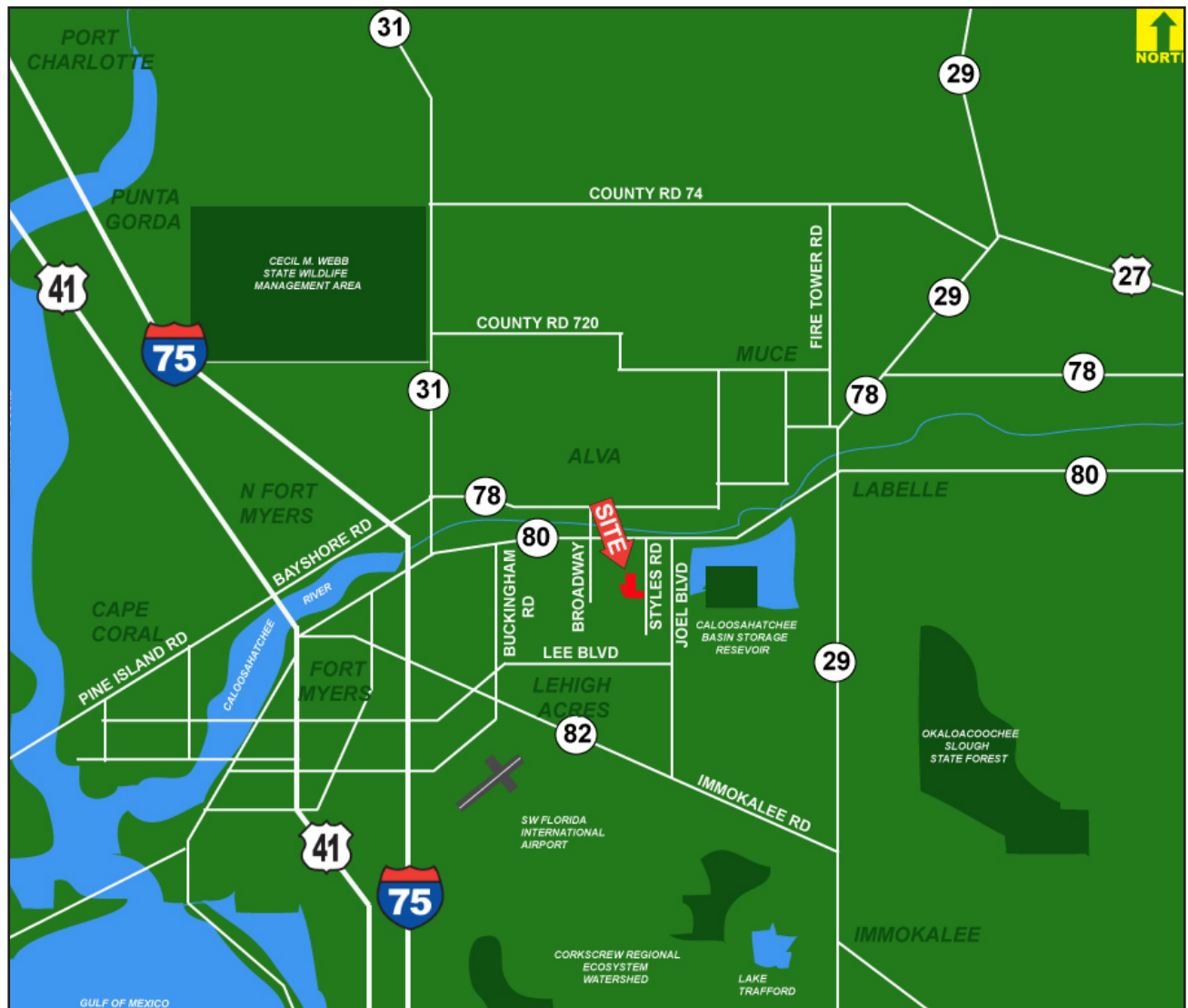
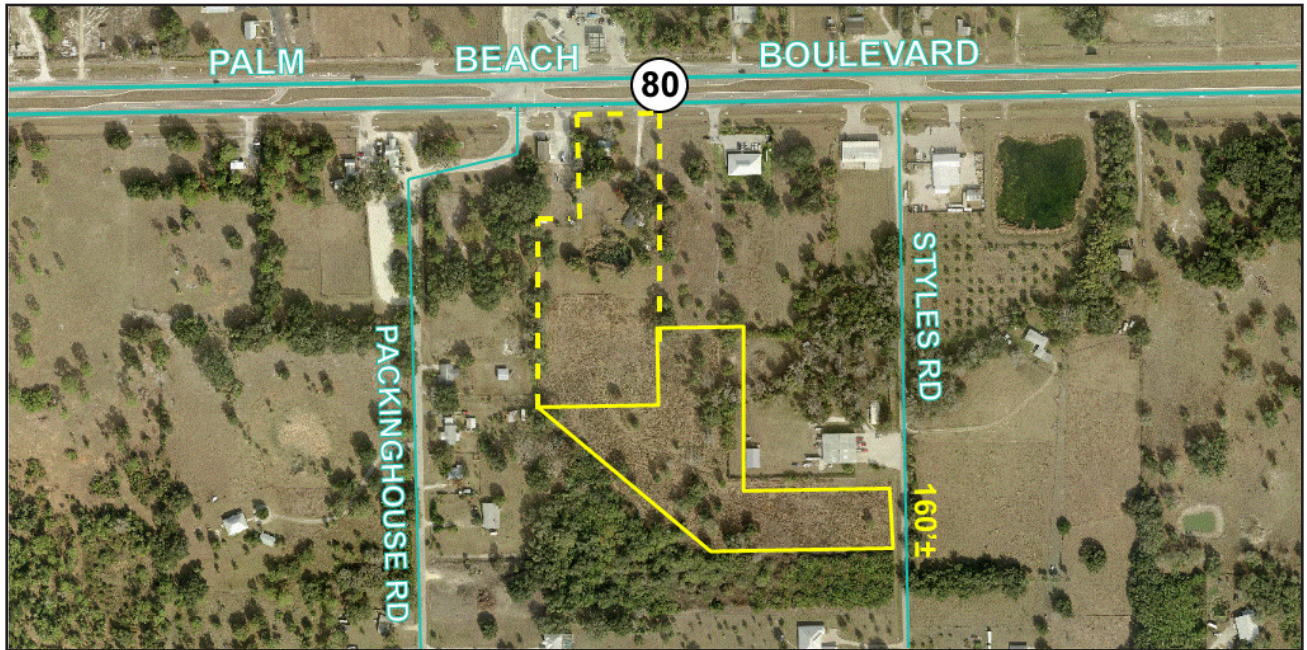
PRICE: \$ 60,000 (Subject to Bank Approval)

COMMENTS: This is a short sale, subject to Bank Approval. 5.74± Acres of residential land. The property has RS-1 (Residential) Zoning and also lies in the proposed Alva Rural Village. This designates the property with the Future Land Use of Moderate Density Residential which allows for multi-family developments. The property is located just south of State Road 80 and has easy access to I-75 and other major corridors. There is an additional 5.19± Acres of adjacent residential and commercial land available for sale. (See listing WA 002226)

CONTACT: TOM WOODYARD
PHONE: (239) 425-6011
E-MAIL: twoodyard@wa-cr.com

The statements and figures presented herein, while not guaranteed, are secured from sources we believe authoritative. Subject to prior sale, lease, withdrawal and price change without notice.

Styles Road, Alva, FL. 33920



The statements and figures presented herein, while not guaranteed, are secured from sources we believe authoritative. Subject to prior sale, lease, withdrawal and price change without notice.