

5.56± Acre Ranch Site FOR SALE



LOCATION: 1384 Bridle Lane, Cape Coral, FL 33991

STRAP #: 20-44-23-C3-00001.1010

ZONING: CORR - Corridor

SIZE: 5.56± Acres or 242,194± Sq. Ft.

2010 TAXES: \$ 864

PRICE: 425,000

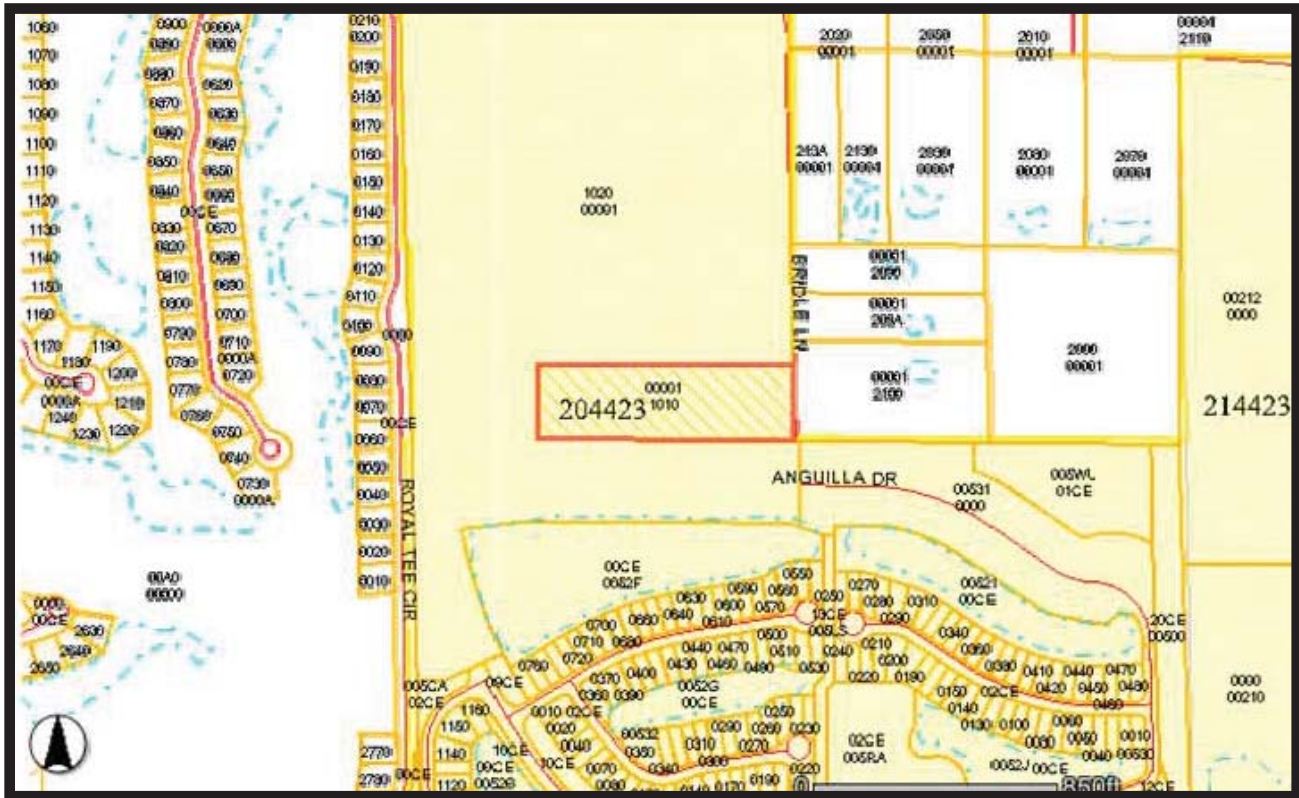
UTILITIES: Water/Sewer

COMMENTS: Ideal estate homesite adjacent to Bonita Bay's Sandoval, Royal Tee Golf and Country Club. New Publix shopping center nearby and quick and easy access into Fort Myers via major roadways. Pine Island Road to Saddlewood Lane.

CONTACT: TOM WOODYARD
PHONE: (239) 425-6011
E-MAIL: twodyard@wa-cr.com

The statements and figures presented herein, while not guaranteed, are secured from sources we believe authoritative. Subject to prior sale, lease, withdrawal and price change without notice.

1384 Bridle Lane, Cape Coral, FL 33991



The statements and figures presented herein, while not guaranteed, are secured from sources we believe authoritative. Subject to prior sale, lease, withdrawal and price change without notice.