



MECHANICAL EQUIPMENT SCHEDULE

MARK	MODEL	MANUFACTURER	COOLING @ AIR			HEATING			MISC.
			CFM	QA	BTU/H	STG.	VOLTAJE	FLA	
RE-20	RE-20	TRANE	100	100	200	1	240V	5	12,143
RE-21	RE-21	TRANE	100	100	200	1	240V	5	12,143
RE-22	RE-22	TRANE	100	100	200	1	240V	5	12,143
RE-23	RE-23	TRANE	100	100	200	1	240V	5	12,143
RE-24	RE-24	TRANE	100	100	200	1	240V	5	12,143
RE-25	RE-25	TRANE	100	100	200	1	240V	5	12,143
RE-26	RE-26	TRANE	100	100	200	1	240V	5	12,143
RE-27	RE-27	TRANE	100	100	200	1	240V	5	12,143
RE-28	RE-28	TRANE	100	100	200	1	240V	5	12,143
RE-29	RE-29	TRANE	100	100	200	1	240V	5	12,143
RE-30	RE-30	TRANE	100	100	200	1	240V	5	12,143

- 1) HANGERS TO BE PROVIDED BY OTHERS.
- 2) WALL MOUNTED AIR HANDLER TO BE PROVIDED BY OTHERS.
- 3) AIR FLOW SENSOR TO BE PROVIDED BY OTHERS.
- 4) FAN MOTOR TO BE PROVIDED BY OTHERS.
- 5) FAN MOTOR TO BE PROVIDED BY OTHERS.
- 6) FAN MOTOR TO BE PROVIDED BY OTHERS.
- 7) FAN MOTOR TO BE PROVIDED BY OTHERS.
- 8) FAN MOTOR TO BE PROVIDED BY OTHERS.
- 9) FAN MOTOR TO BE PROVIDED BY OTHERS.
- 10) FAN MOTOR TO BE PROVIDED BY OTHERS.
- 11) FAN MOTOR TO BE PROVIDED BY OTHERS.
- 12) FAN MOTOR TO BE PROVIDED BY OTHERS.
- 13) FAN MOTOR TO BE PROVIDED BY OTHERS.
- 14) FAN MOTOR TO BE PROVIDED BY OTHERS.
- 15) FAN MOTOR TO BE PROVIDED BY OTHERS.
- 16) FAN MOTOR TO BE PROVIDED BY OTHERS.
- 17) FAN MOTOR TO BE PROVIDED BY OTHERS.
- 18) FAN MOTOR TO BE PROVIDED BY OTHERS.
- 19) FAN MOTOR TO BE PROVIDED BY OTHERS.
- 20) FAN MOTOR TO BE PROVIDED BY OTHERS.

FAN SCHEDULE

MARK	MODEL	MANUFACTURER	CFM	S.P.F.	RPM	H.P.	WATTS	SONES	VOLTAJE	REMARKS
FA-1	FA-1	TRANE	100	100	200	1	240V	5	12,143	
FA-2	FA-2	TRANE	100	100	200	1	240V	5	12,143	
FA-3	FA-3	TRANE	100	100	200	1	240V	5	12,143	
FA-4	FA-4	TRANE	100	100	200	1	240V	5	12,143	
FA-5	FA-5	TRANE	100	100	200	1	240V	5	12,143	
FA-6	FA-6	TRANE	100	100	200	1	240V	5	12,143	
FA-7	FA-7	TRANE	100	100	200	1	240V	5	12,143	
FA-8	FA-8	TRANE	100	100	200	1	240V	5	12,143	
FA-9	FA-9	TRANE	100	100	200	1	240V	5	12,143	
FA-10	FA-10	TRANE	100	100	200	1	240V	5	12,143	

AIR DISTRIBUTION SCHEDULE

MARK	MODEL	MANUFACTURER	SIZE	REMARKS
1	TR-1	TRANE	24 X 24	423
2	TR-2	TRANE	18 X 18	12
3	TR-3	TRANE	18 X 18	12
4	TR-4	TRANE	12 X 12	12
5	TR-5	TRANE	12 X 12	12
6	TR-6	TRANE	12 X 12	12
7	TR-7	TRANE	12 X 12	12
8	TR-8	TRANE	12 X 12	12
9	TR-9	TRANE	12 X 12	12
10	TR-10	TRANE	12 X 12	12

- 1) FURNISH THE FOLLOWING ITEMS AS INDICATED IN THE REMARKS COLUMN.
- 2) FURNISH THE FOLLOWING ITEMS AS INDICATED IN THE REMARKS COLUMN.
- 3) FURNISH THE FOLLOWING ITEMS AS INDICATED IN THE REMARKS COLUMN.
- 4) FURNISH THE FOLLOWING ITEMS AS INDICATED IN THE REMARKS COLUMN.

OUTSIDE AIR MATRIX

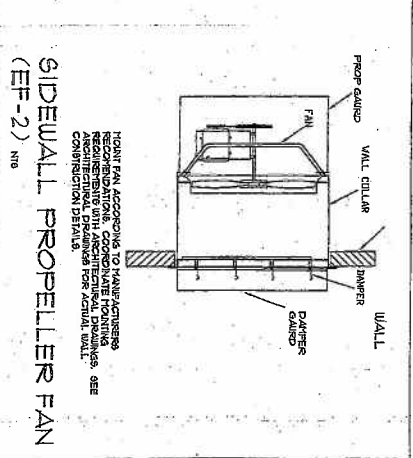
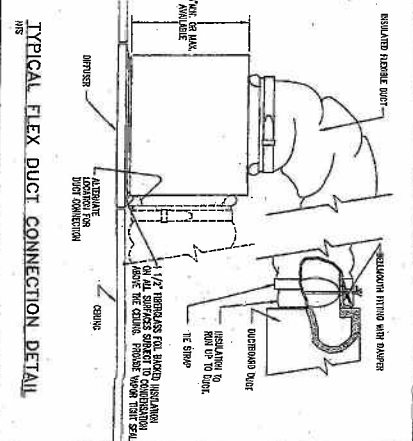
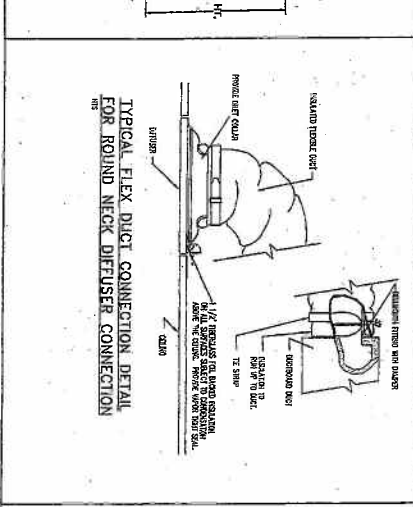
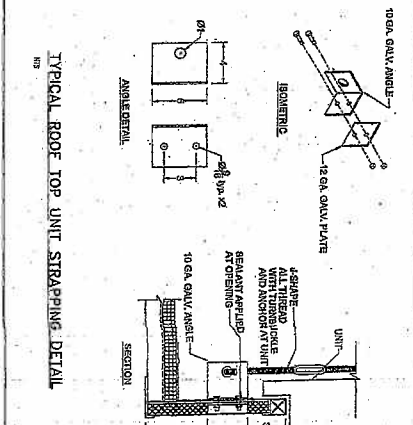
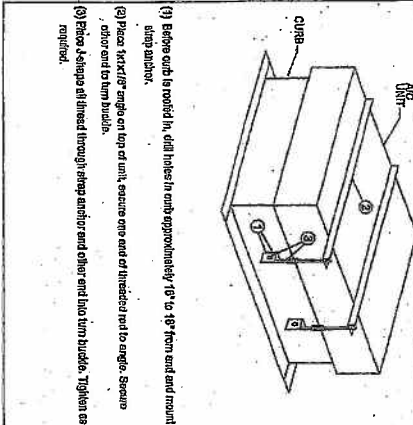
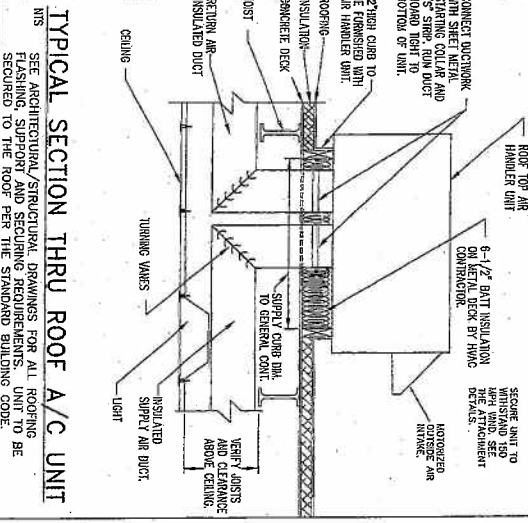
ZONE #	SYSTEM	TYPE	REMARKS
1	RU-1	GRZE	
2	RU-2	GRZE	
3	RU-3	GRZE	
4	RU-4	GRZE	
5	RU-5	GRZE	
6	RU-6	GRZE	
7	RU-7	GRZE	
8	RU-8	GRZE	
9	RU-9	GRZE	
10	RU-10	GRZE	
11	RU-11	GRZE	

OUTSIDE AIR MATRIX

ZONE #	SYSTEM	TYPE	REMARKS
1	RU-1	GRZE	
2	RU-2	GRZE	
3	RU-3	GRZE	
4	RU-4	GRZE	
5	RU-5	GRZE	
6	RU-6	GRZE	
7	RU-7	GRZE	
8	RU-8	GRZE	
9	RU-9	GRZE	
10	RU-10	GRZE	
11	RU-11	GRZE	

HEATING, VENTILATING & AIR CONDITIONING SPECIFICATIONS

- 1) ALL RETURN DUCTWORK (EXCEPT AS NOTED BELOW)
- 2) EXPANDABLE/FLEXIBLE ALUMINUM DUCTWORK EQUAL TO WESTFLEX
- 3) FLEXIBLE DUCTWORK SHALL BE 1.5 INCH THICK EQUAL TO
- 4) CONTRIBUTION STANDARDS SHALL BE 1.5 INCH THICK EQUAL TO
- 5) CONSTRUCTION STANDARDS SHALL BE 1.5 INCH THICK EQUAL TO
- 6) SEALING AND HEAT SEAL TAPES OR WITH MASTIC AND GLASS FIBER
- 7) SEALER AS NOTED BY MANUFACTURER SHALL BE USED TO SEAL ALL
- 8) ALTERNATE WHEN INSTALLED ACCORDING TO THE MANUFACTURER'S
- 9) RECOMMENDATIONS AND THE A/C
- 10) ALL SUPPLY DUCTWORK (EXCEPT AS NOTED BELOW)
- 11) RETURN AIR DUCTWORK FROM TRUNK LINE (PROVIDE SPIN IN FITTING WITH DAMPER)
- 12) TESTING AND BALANCING
- 13) CONTRACTOR SHALL PROVIDE EQUIPMENT AND PERSONNEL WHICH SPECIALIZE IN
- 14) THE BALANCING AND TESTING OF HEATING, VENTILATING, AND AIR CONDITIONING
- 15) DISTRIBUTION AND EXHAUST SYSTEMS SHALL BE PROVIDED BY THE CONTRACTOR
- 16) H.V.A.C. SCHEDULES AND PLANS
- 17) E. H.V.A.C. NOTES
- 18) THE DUCTWORK LAYOUT IS SCHEMATIC. ACTUAL INSTALLED DUCT LAYOUT MAY
- 19) VARY FROM SCHEMATIC. THE CONTRACTOR IS RESPONSIBLE FOR
- 20) VERIFYING THE ACTUAL LAYOUT AND PROVIDING THE NECESSARY MECHANICAL,
- 21) ELECTRICAL, AND PLUMBING WORK TO ACCOMMODATE ALL STRUCTURAL, ARCHITECTURAL, MECHANICAL,
- 22) AND ELECTRICAL COMPONENTS WHETHER INDICATED ON THESE PLANS OR
- 23) NOT.
- 24) H.V.A.C. PLAN NOTES
- 25) CONDENSATE FROM AHU AND TERMINATE @ CONDENSATE RECEPTOR
- 26) RAIN REFRIGERANT LINES UP WALL IN SHEET METAL SHEATHING. RAIN
- 27) TO BE COLLECTED IN CONDENSATE RECEPTOR. RAIN REFRIGERANT LINES
- 28) TO BE COLLECTED IN CONDENSATE RECEPTOR. RAIN REFRIGERANT LINES
- 29) TO BE COLLECTED IN CONDENSATE RECEPTOR. RAIN REFRIGERANT LINES
- 30) TO BE COLLECTED IN CONDENSATE RECEPTOR. RAIN REFRIGERANT LINES
- 31) TO BE COLLECTED IN CONDENSATE RECEPTOR. RAIN REFRIGERANT LINES
- 32) TO BE COLLECTED IN CONDENSATE RECEPTOR. RAIN REFRIGERANT LINES
- 33) TO BE COLLECTED IN CONDENSATE RECEPTOR. RAIN REFRIGERANT LINES
- 34) TO BE COLLECTED IN CONDENSATE RECEPTOR. RAIN REFRIGERANT LINES
- 35) TO BE COLLECTED IN CONDENSATE RECEPTOR. RAIN REFRIGERANT LINES
- 36) TO BE COLLECTED IN CONDENSATE RECEPTOR. RAIN REFRIGERANT LINES
- 37) TO BE COLLECTED IN CONDENSATE RECEPTOR. RAIN REFRIGERANT LINES
- 38) TO BE COLLECTED IN CONDENSATE RECEPTOR. RAIN REFRIGERANT LINES
- 39) TO BE COLLECTED IN CONDENSATE RECEPTOR. RAIN REFRIGERANT LINES
- 40) TO BE COLLECTED IN CONDENSATE RECEPTOR. RAIN REFRIGERANT LINES
- 41) TO BE COLLECTED IN CONDENSATE RECEPTOR. RAIN REFRIGERANT LINES
- 42) TO BE COLLECTED IN CONDENSATE RECEPTOR. RAIN REFRIGERANT LINES
- 43) TO BE COLLECTED IN CONDENSATE RECEPTOR. RAIN REFRIGERANT LINES
- 44) TO BE COLLECTED IN CONDENSATE RECEPTOR. RAIN REFRIGERANT LINES
- 45) TO BE COLLECTED IN CONDENSATE RECEPTOR. RAIN REFRIGERANT LINES
- 46) TO BE COLLECTED IN CONDENSATE RECEPTOR. RAIN REFRIGERANT LINES
- 47) TO BE COLLECTED IN CONDENSATE RECEPTOR. RAIN REFRIGERANT LINES
- 48) TO BE COLLECTED IN CONDENSATE RECEPTOR. RAIN REFRIGERANT LINES
- 49) TO BE COLLECTED IN CONDENSATE RECEPTOR. RAIN REFRIGERANT LINES
- 50) TO BE COLLECTED IN CONDENSATE RECEPTOR. RAIN REFRIGERANT LINES
- 51) TO BE COLLECTED IN CONDENSATE RECEPTOR. RAIN REFRIGERANT LINES
- 52) TO BE COLLECTED IN CONDENSATE RECEPTOR. RAIN REFRIGERANT LINES
- 53) TO BE COLLECTED IN CONDENSATE RECEPTOR. RAIN REFRIGERANT LINES
- 54) TO BE COLLECTED IN CONDENSATE RECEPTOR. RAIN REFRIGERANT LINES
- 55) TO BE COLLECTED IN CONDENSATE RECEPTOR. RAIN REFRIGERANT LINES
- 56) TO BE COLLECTED IN CONDENSATE RECEPTOR. RAIN REFRIGERANT LINES
- 57) TO BE COLLECTED IN CONDENSATE RECEPTOR. RAIN REFRIGERANT LINES
- 58) TO BE COLLECTED IN CONDENSATE RECEPTOR. RAIN REFRIGERANT LINES
- 59) TO BE COLLECTED IN CONDENSATE RECEPTOR. RAIN REFRIGERANT LINES
- 60) TO BE COLLECTED IN CONDENSATE RECEPTOR. RAIN REFRIGERANT LINES
- 61) TO BE COLLECTED IN CONDENSATE RECEPTOR. RAIN REFRIGERANT LINES
- 62) TO BE COLLECTED IN CONDENSATE RECEPTOR. RAIN REFRIGERANT LINES
- 63) TO BE COLLECTED IN CONDENSATE RECEPTOR. RAIN REFRIGERANT LINES
- 64) TO BE COLLECTED IN CONDENSATE RECEPTOR. RAIN REFRIGERANT LINES
- 65) TO BE COLLECTED IN CONDENSATE RECEPTOR. RAIN REFRIGERANT LINES
- 66) TO BE COLLECTED IN CONDENSATE RECEPTOR. RAIN REFRIGERANT LINES
- 67) TO BE COLLECTED IN CONDENSATE RECEPTOR. RAIN REFRIGERANT LINES
- 68) TO BE COLLECTED IN CONDENSATE RECEPTOR. RAIN REFRIGERANT LINES
- 69) TO BE COLLECTED IN CONDENSATE RECEPTOR. RAIN REFRIGERANT LINES
- 70) TO BE COLLECTED IN CONDENSATE RECEPTOR. RAIN REFRIGERANT LINES
- 71) TO BE COLLECTED IN CONDENSATE RECEPTOR. RAIN REFRIGERANT LINES
- 72) TO BE COLLECTED IN CONDENSATE RECEPTOR. RAIN REFRIGERANT LINES
- 73) TO BE COLLECTED IN CONDENSATE RECEPTOR. RAIN REFRIGERANT LINES
- 74) TO BE COLLECTED IN CONDENSATE RECEPTOR. RAIN REFRIGERANT LINES
- 75) TO BE COLLECTED IN CONDENSATE RECEPTOR. RAIN REFRIGERANT LINES
- 76) TO BE COLLECTED IN CONDENSATE RECEPTOR. RAIN REFRIGERANT LINES
- 77) TO BE COLLECTED IN CONDENSATE RECEPTOR. RAIN REFRIGERANT LINES
- 78) TO BE COLLECTED IN CONDENSATE RECEPTOR. RAIN REFRIGERANT LINES
- 79) TO BE COLLECTED IN CONDENSATE RECEPTOR. RAIN REFRIGERANT LINES
- 80) TO BE COLLECTED IN CONDENSATE RECEPTOR. RAIN REFRIGERANT LINES
- 81) TO BE COLLECTED IN CONDENSATE RECEPTOR. RAIN REFRIGERANT LINES
- 82) TO BE COLLECTED IN CONDENSATE RECEPTOR. RAIN REFRIGERANT LINES
- 83) TO BE COLLECTED IN CONDENSATE RECEPTOR. RAIN REFRIGERANT LINES
- 84) TO BE COLLECTED IN CONDENSATE RECEPTOR. RAIN REFRIGERANT LINES
- 85) TO BE COLLECTED IN CONDENSATE RECEPTOR. RAIN REFRIGERANT LINES
- 86) TO BE COLLECTED IN CONDENSATE RECEPTOR. RAIN REFRIGERANT LINES
- 87) TO BE COLLECTED IN CONDENSATE RECEPTOR. RAIN REFRIGERANT LINES
- 88) TO BE COLLECTED IN CONDENSATE RECEPTOR. RAIN REFRIGERANT LINES
- 89) TO BE COLLECTED IN CONDENSATE RECEPTOR. RAIN REFRIGERANT LINES
- 90) TO BE COLLECTED IN CONDENSATE RECEPTOR. RAIN REFRIGERANT LINES
- 91) TO BE COLLECTED IN CONDENSATE RECEPTOR. RAIN REFRIGERANT LINES
- 92) TO BE COLLECTED IN CONDENSATE RECEPTOR. RAIN REFRIGERANT LINES
- 93) TO BE COLLECTED IN CONDENSATE RECEPTOR. RAIN REFRIGERANT LINES
- 94) TO BE COLLECTED IN CONDENSATE RECEPTOR. RAIN REFRIGERANT LINES
- 95) TO BE COLLECTED IN CONDENSATE RECEPTOR. RAIN REFRIGERANT LINES
- 96) TO BE COLLECTED IN CONDENSATE RECEPTOR. RAIN REFRIGERANT LINES
- 97) TO BE COLLECTED IN CONDENSATE RECEPTOR. RAIN REFRIGERANT LINES
- 98) TO BE COLLECTED IN CONDENSATE RECEPTOR. RAIN REFRIGERANT LINES
- 99) TO BE COLLECTED IN CONDENSATE RECEPTOR. RAIN REFRIGERANT LINES
- 100) TO BE COLLECTED IN CONDENSATE RECEPTOR. RAIN REFRIGERANT LINES



**KEVATRON ENGINEERING, INC.**  
 2351 GOLF COURT SW  
 SUITE 200, LUDLOW 33081 (407) 242-2527  
 DESIGNED BY: [Signature]  
 APPROVED BY: [Signature]  
 DATE: 12/4/06  
 REFERENCE: [Reference]

9-SHEET  
 M-2

**JASON P. TRAMONTE**  
 ARCHITECT  
 1625 S.E. 46TH STREET SUITE 2A CAPE CORAL, FLORIDA 33904  
 (239) 543-0957 AA 0002443

A NEW BUILDING FOR  
 MCBAILLY PROPERTIES - GATEWAY  
 LEE COUNTY, FLORIDA

PROJ. NO. 2006-61  
 DRAIN  
 DATE: 12/01/06  
 CHECKED: J.P.T.  
 REVISIONS:  
 DATE: BY





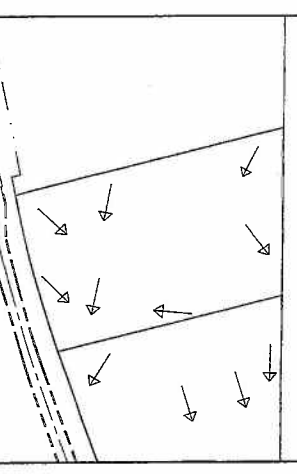






EXISTING ELEVATION (NGVD)  
 PROPOSED ELEVATION (NGVD)  
 DIRECTION OF DRAINAGE FLOW  
 EXISTING SURFACE HYDROLOGY

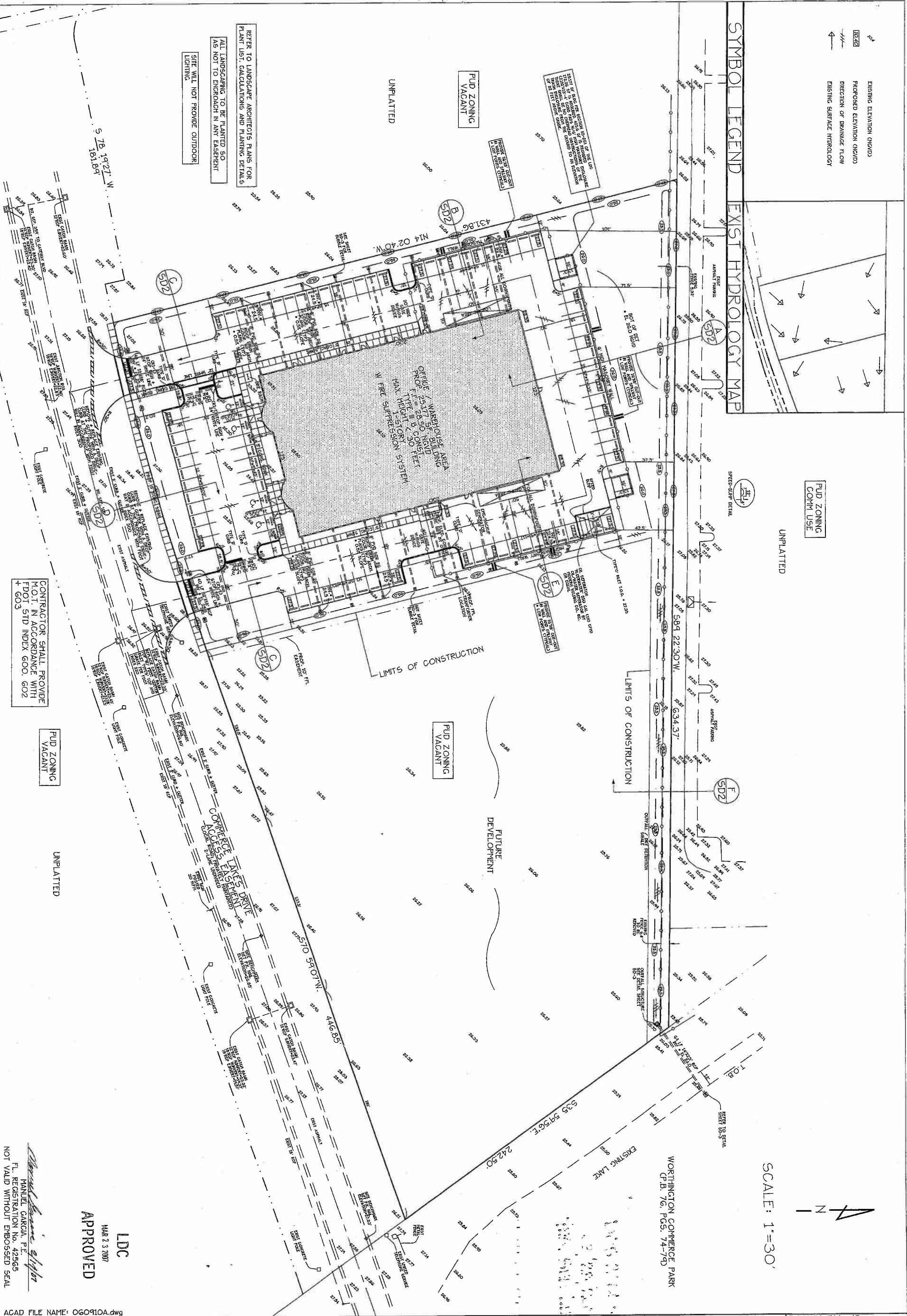
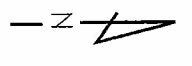
SYMBOL LEGEND  
 EXISTING HYDROLOGY MAP



PUD ZONING  
 COMM USE

UNPLATTED

SCALE: 1"=30'



REFER TO LANDSCAPE ARCHITECT'S PLANS FOR  
 PLANT LIST, CALCULATIONS AND PLANNING DETAILS

ALL LANDSCAPING TO BE PLANTED SO  
 AS NOT TO ENCRUSH IN ANY EASEMENT

SITE WILL NOT PROVIDE OUTDOOR  
 LIGHTING

PUD ZONING  
 VACANT

UNPLATTED

PUD ZONING  
 VACANT

FUTURE  
 DEVELOPMENT

PUD ZONING  
 VACANT

UNPLATTED

CONTRACTOR SHALL PROVIDE  
 M.O.I. IN ACCORDANCE WITH  
 FDOT STD INDEX 600. 602  
 + 603

LDC  
 MAR 23 2007  
 APPROVED

MANUEL GARCIA, P.E.  
 FL. REGISTRATION NO. 42565  
 NOT VALID WITHOUT EMBOSSED SEAL

ACAD FILE NAME: OGO910A.dwg

MCBAILEY PROPERTIES LLC, 3430 WILLARD ST, FORT MYERS, FLORIDA 33916  
 MCBAILEY PROPERTIES - GATEWAY  
 PAVING, GRADING + DRAINAGE PLAN  
 SECTION 18, TOWNSHIP 45 SOUTH, RANGE 26 EAST

SOUTHWEST ENGINEERING  
 OF LEE COUNTY  
 1560 MATTHEW DRIVE, SUITE B  
 FORT MYERS, FLORIDA 33907  
 PHONE: (239) 274-9124 FAX: (239) 274-9125

DATE	REVISION	DRAWN BY: JC
1/25/07	REV. PER LEE COUNTY COMMENTS	DESIGNED BY: MG
		APPROV'D BY: MG
		PROJ. No.: OGO910
		DATE: 11/01/06
		SCALE: 1"=30'

SHEET  
 SD-1



**LEGEND**

- F.I.C. FOUND IRON ROD 3/8"
- S.I.C. FOUND IRON ROD 1/2"
- F.C.M. FOUND CONCRETE MONUMENT 4"x4"
- S.P.K. SE PARKER KALON NAIL
- F.A.M. FOUND ALUMINUM MONUMENT
- P.S.M. PROFESSIONAL SURVEYOR & MAPPER
- F.P.L. FLORIDA POWER & LIGHT CONCRETE PAD
- R.O.W. RIGHT-OF-WAY
- N.C.V.D. NATIONAL GEODETIC VERTICAL DATUM
- (U) UNPLATTED
- (C) CALCULATED PER PLAT DATA
- L.B. LICENSED BUSINESS
- P.B. PLAT BOOK
- P.A.B. POINT OF BEGINNING
- P.O.C. POINT OF COMMENCEMENT
- P.K.P. PARKER KALON
- P.F.P. PLAT BOOK
- P.C.P. CONCRETE PAD
- C.P. CONCRETE PAD
- U.T.S. UNITED TELEPHONE SERVICE
- W.P. WATER MAIN
- W.P.P. WOOD POWER POLE
- U.P. UTILITY EXHAUST
- C.P.P. CONCRETE LIGHT POLE
- O.R. OFFICIAL RECORDS BOOK
- C.A. CATCH BASIN
- F.H. FIRE HYDRANT
- P.S. PAGES
- E.S. ELECTRIC SERVICE
- A.C. AIR CONDITIONING
- C.O. CLEAN OUT
- L.P. LIGHT POLE
- J.B. JUNCTION BOX
- W.M. WATER METER
- C.W. CURB WALK
- G.W. GROUND WATER
- N.V. NORTH
- S.V. SOUTH
- E.V. EAST
- W.V. WEST

**PROPERTY DESCRIPTION:**

A PARCEL OF LAND LOCATED IN SECTION 18, TOWNSHIP 45 SOUTH, RANGE 26 EAST, LEE COUNTY, FLORIDA, BEING MORE PARTICULARLY DESCRIBED AS FOLLOWS:  
 COMMENCE AT THE SOUTHWEST CORNER OF WORTHINGTON COMMERCE PARK, ACCORDING TO THE PLAT THEREOF RECORDED IN PLAT BOOK 76, PAGES 74 THROUGH 78 OF THE PUBLIC RECORDS OF LEE COUNTY, FLORIDA, THENCE RUN N 35°59'56" W, ALONG THE WEST LINE OF SAID WORTHINGTON COMMERCE PARK, A DISTANCE OF 1594.98 FEET TO THE POINT OF BEGINNING OF THE PARCEL OF LAND HEREBY DESCRIBED, THE SAME BEING A PORTION OF THE NORTH LINE OF THE ACCESS EASEMENT RECORDED IN RECORDS OF LEE COUNTY, FLORIDA, THENCE RUN S 70°59'07" W, ALONG THE NORTH LINE OF SAID ACCESS EASEMENT FOR A DISTANCE OF 446.86 FEET TO THE BEGINNING OF A TANGENTIAL CIRCULAR CURVE, CONCAVE NORTHEAST, THENCE RUN WESTERLY ALONG THE NORTH LINE OF SAID ACCESS EASEMENT AND ALONG THE ARC OF SAID CURVE TO THE RIGHT, HAVING A RADIUS OF 2265.00 FEET, THROUGH A CENTRAL ANGLE OF 09°53'11", SUBTENDED BY A CHORD OF 289.30 FEET AT A BEARING OF S 45°52'42" W, TO A POINT OF BEGINNING OF THE PARCEL OF LAND HEREBY DESCRIBED, THENCE RUN N 14°02'40" W, FOR A DISTANCE OF 431.86 FEET TO A POINT ON THE WEST LINE OF SAID WORTHINGTON COMMERCE PARK, THENCE RUN S 35°59'56" E, ALONG THE WEST LINE OF SAID WORTHINGTON COMMERCE PARK, FOR A DISTANCE OF 242.50 FEET TO THE POINT OF BEGINNING, CONTAINING 5.00 ACRES, MORE OR LESS.

**NOTES:**

- 1.) BEARINGS SHOWN HEREBY REFER TO WORTHINGTON COMMERCE PARK RECORDED IN PLAT BOOK 76, PAGES 74-79 LEE COUNTY, FLORIDA
- 2.) THIS PROPERTY IS SUBJECT TO EASEMENTS, RESERVATIONS OR RESTRICTIONS OF RECORD.
- 3.) DIMENSIONS SHOWN HEREBY ARE IN FEET AND DECIMALS THEREOF.
- 4.) THIS SURVEY IS NOT VALID WITHOUT THE SIGNATURE AND THE ORIGINAL RAISED SEAL OF A FLORIDA LICENSED SURVEYOR AND MAPPER.
- 5.) IMPROVEMENTS OTHER THAN THOSE SHOWN HAVE NOT BEEN LOCATED.
- 6.) THIS PROPERTY IS LOCATED WITHIN FLOOD ZONE B HAVING NO BASE FLOOD ELEVATION PER F.I.R.M. 126124 0350 B, 09/19/94
- 7.) DIMENSIONS SHOWN HEREBY ARE PER LEGAL, UNLESS OTHERWISE NOTED.
- 8.) ELEVATIONS SHOWN ARE BASED ON NATIONAL GEODETIC VERTICAL DATUM 1929 & "N" IS BUCK CONCRETE & BRASS MARKER N.1.1 RIGHT OF WAY OF STATE ROAD 92 @ LEE MEMORIAL PARK CENTERIAL ELEVATION 26.14.
- 9.) THE DRAINAGE EASEMENT RECORDED IN OFFICIAL RECORDS BOOK 3662 PAGE 3775 AND THE RECROCAL EASEMENT RECORDED IN OFFICIAL RECORDS BOOK 3662 PAGE 3759 DO NOT PERTAIN TO THE ABOVE DESCRIBED PROPERTY.

**CERTIFIED TO:**  
 MC BAILEY PROPERTIES INC.  
 WHOLESALE TITLE

**CERTIFICATION:**  
 I HEREBY CERTIFY THAT THIS BOUNDARY SURVEY OF THE HERBON PARCEL DESCRIBED IN THIS PLAT WAS SURVEYED UNDER MY RESPONSIBLE CHARGE ON THE DATE SHOWN HEREON AND THAT I AM A LICENSED SURVEYOR IN CHARGE OF THE SURVEY BY THE BOARD OF PROFESSIONAL LAND SURVEYORS IN CHAPTER 61G17-6, F.A.C. PURSUANT TO SECTION 472.027 FLORIDA STATUTES.

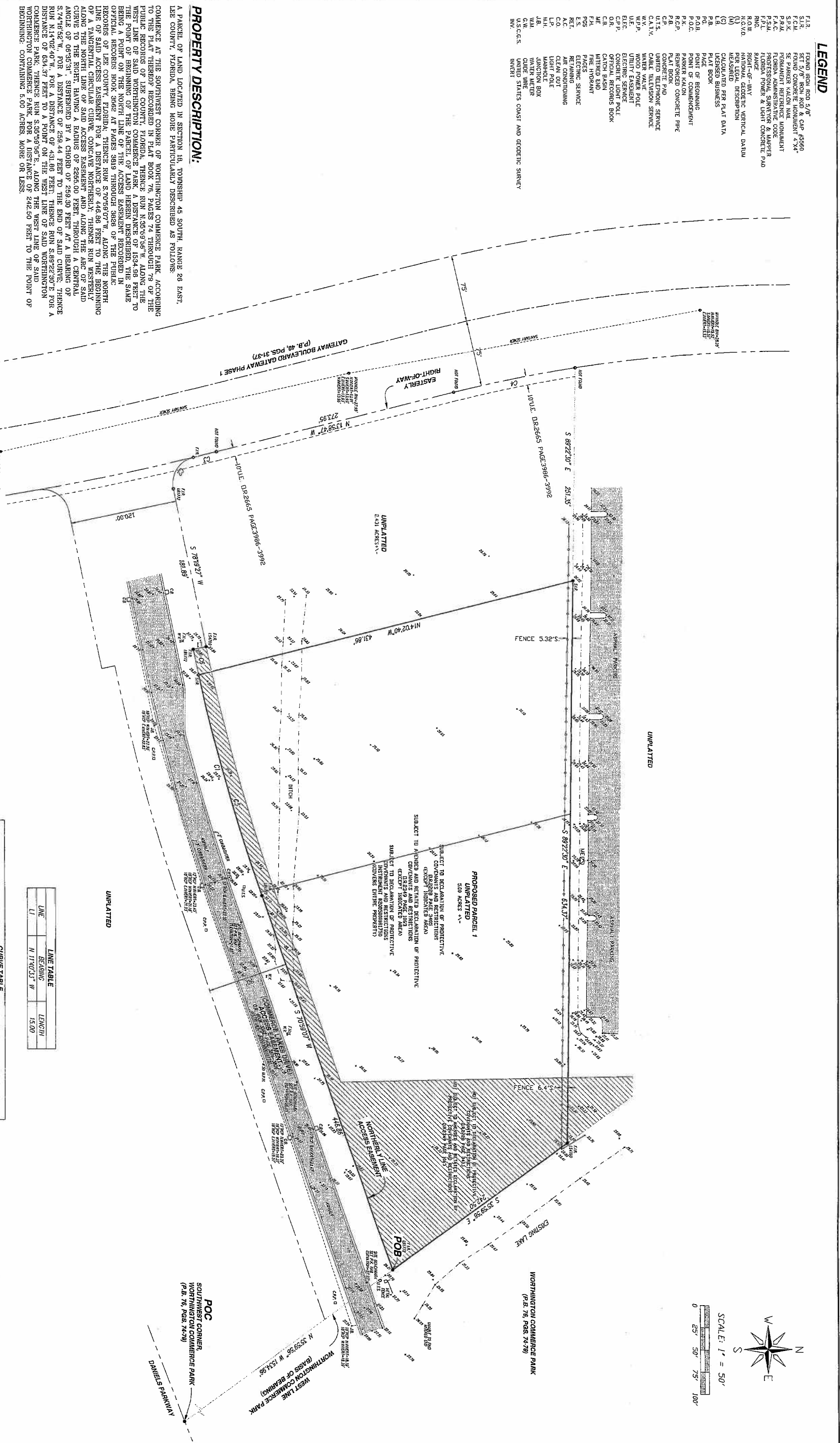
KRIS A. SLOSSER, STATE OF FLORIDA, (P.S.M. #5560)  
 LICENSED SURVEYOR & DRAFTER OF PLATS AND EASEMENTS  
 HANDED PROPOSED 20 UTILITY EASEMENT 08/31/06

**BOUNDARY SURVEY**  
 A PORTION OF  
 SECTION 18 TOWNSHIP 45 SOUTH RANGE 26 EAST  
 LEE COUNTY, FLORIDA

**KRIS A SLOSSER P.S.M.**  
 4650 VILLA CAPRI LN. BONITA SPRINGS  
 FLORIDA 34134 (239) 947-1915

CURVE	RADIUS	DELTA	CHORD	BEARING	LENGTH
C1	2265.00	07°20'27"	288.64	S 74°59'17" W	288.64
C2	20.00	08°13'29"	41.76	N 57°33'48" W	48.19
C3	2875.00	00°51'43"	28.52	N 13°42'53" W	28.52
C4	1925.00	05°12'25"	138.35	N 11°22'14" W	138.39
C5	2255.00	6°55'31"	299.30	S 74°05'57" W	299.44
C6	2255.00	0°44'49"	29.40	N 77°57'02" E	29.40

LINE	BEARING	LENGTH
L1	N 11°40'33" W	15.00

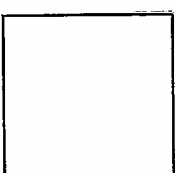


DRIVING BOOK AND PAGE  
 DRAWING 00302  
 SCALE: 1" = 50'

PROJ NO	2006-61
DRAWN J.A.C.	
DATE	10/13/06
CHECKED J.P.T.	
REVISIONS	
DATE	BT

A NEW BUILDING FOR  
EAGLE CONCRETE

LEE COUNTY, FLORIDA



**JASON P. TRAMONTE**  
ARCHITECT  
INC.

1625 SE 46TH STREET SUITE 2A, CAPE CORAL, FLORIDA 33904  
(239) 549-0997 AA 0022443

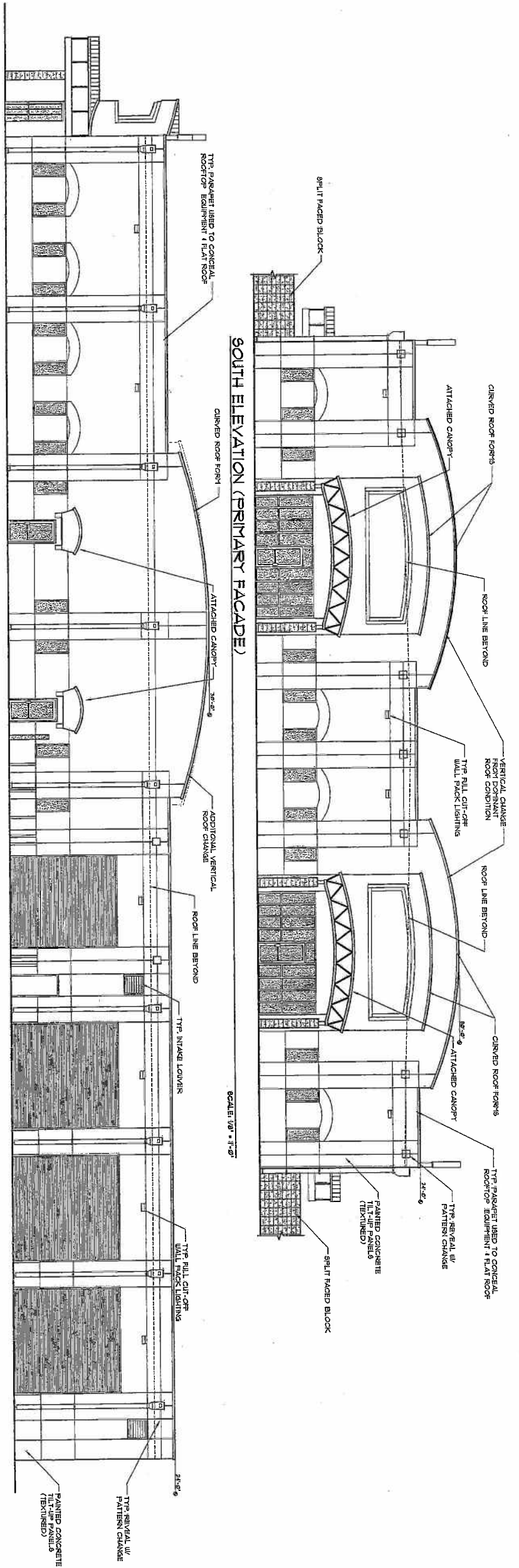
REVISED 2/15/07  
SHEET

LDC  
MAY 23 2007  
APPROVED

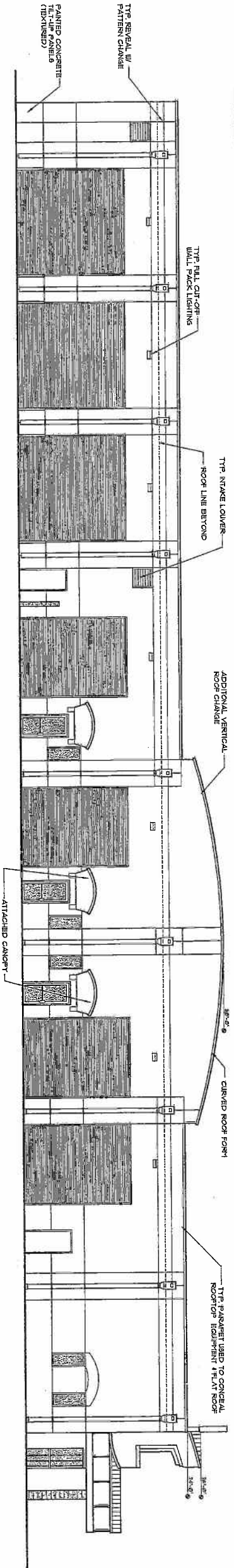
PRELIMINARY

A-2  
OF 2 SHEETS

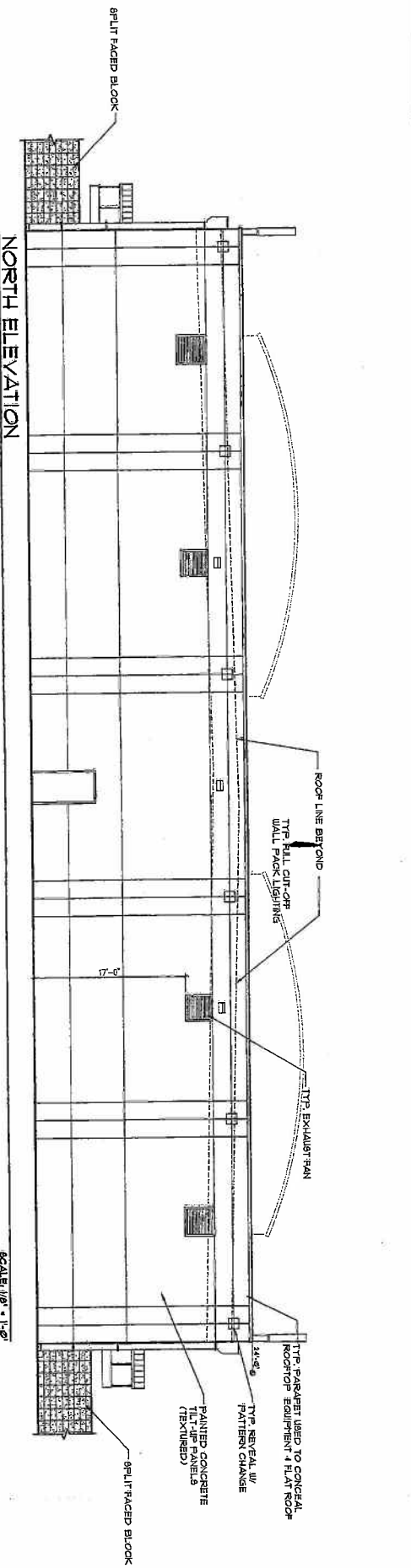
**SOUTH ELEVATION (PRIMARY FACADE)**



**EAST ELEVATION**



**WEST ELEVATION**



**NORTH ELEVATION**