



LOCATION: 12570 Metro Pkwy, Unit 2, Fort Myers, FL 33912

ZONING: IL - Light Industrial

SIZE: 6,990± Sq. Ft.

UTILITIES: Water & Sewer

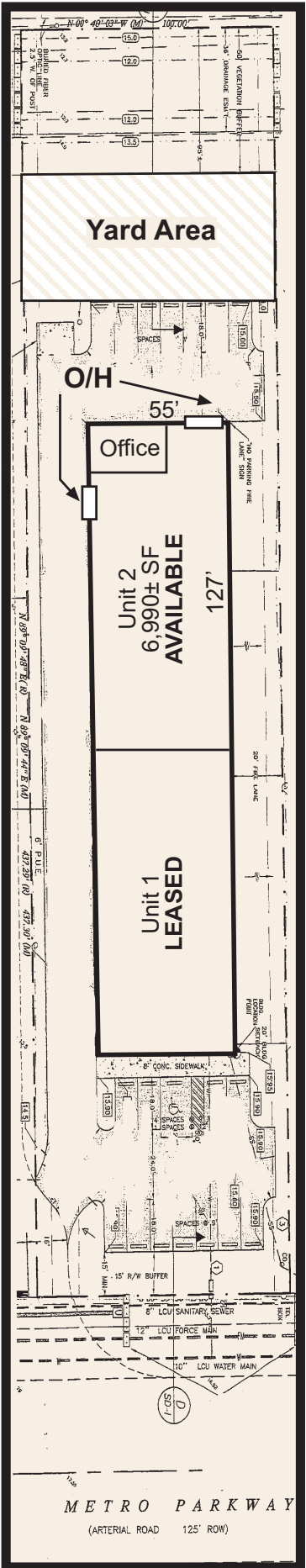
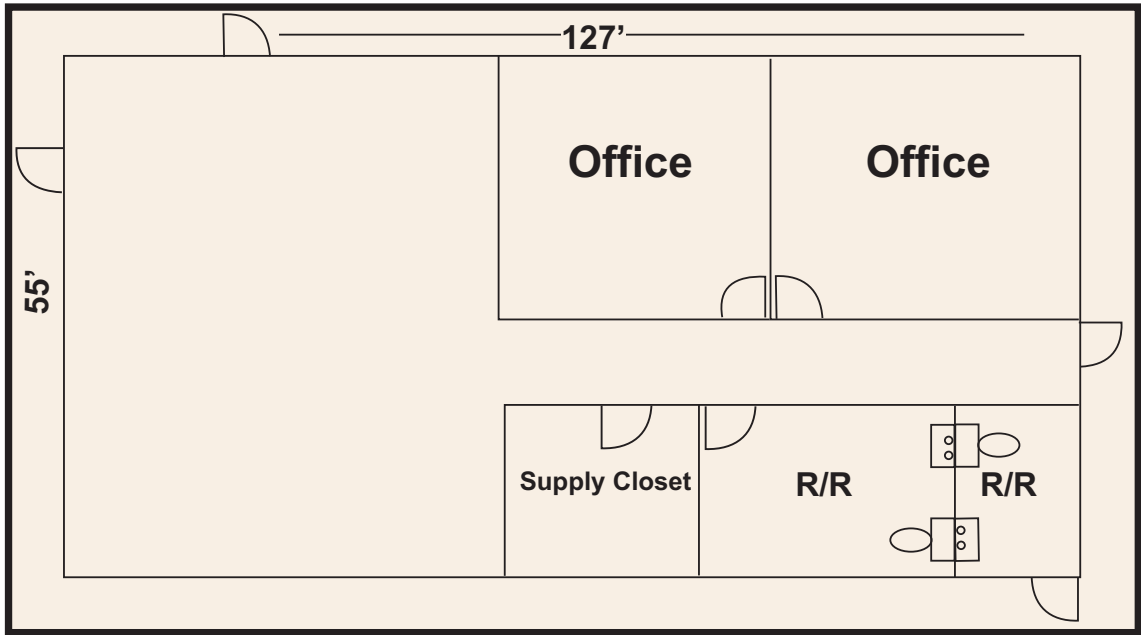
PRICE: \$6,162.85 per Month plus Sales Tax or
\$8.75 per Sq. Ft plus \$1.83 per Sq Ft. CAM

COMMENTS: Office / Warehouse with two over head doors located south of Crystal Dr on Metro Pkwy. Seven parking spaces, 40' x 100' lime-rocked yard included. Signage on main pylon sign available. See reverse for location map and plans.

CONTACT: JOHN KREMSKI, CCIM
PHONE: (239) 425-6017
E-MAIL: john@johnkremski.com
WEB SITE: www.johnkremski.com

12570 Metro Pkwy, Fort Myers, FL 33912

Office Detail



The statements and figures presented herein, while not guaranteed, are secured from sources we believe authoritative. Subject to prior sale, lease, withdrawal and price change without notice.