

Multi-Bay Flex Space Building with Half Acre Fenced Yard



LOCATION: 11615 Chitwood Drive, Fort Myers, FL 33908

STRAP #: 06-46-24-00-00003.0070

ZONING: C-2 - Commercial

SIZE: Building 8,520± Sq. Ft.
Land 1.13± Acres

YEAR BUILT: 1980

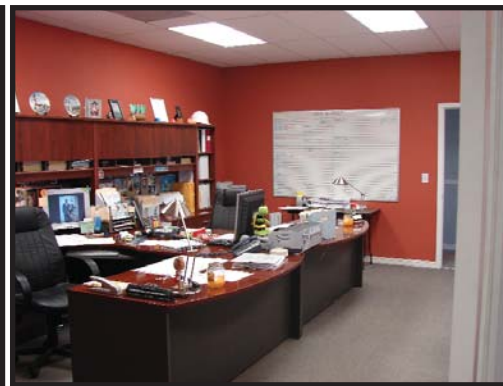
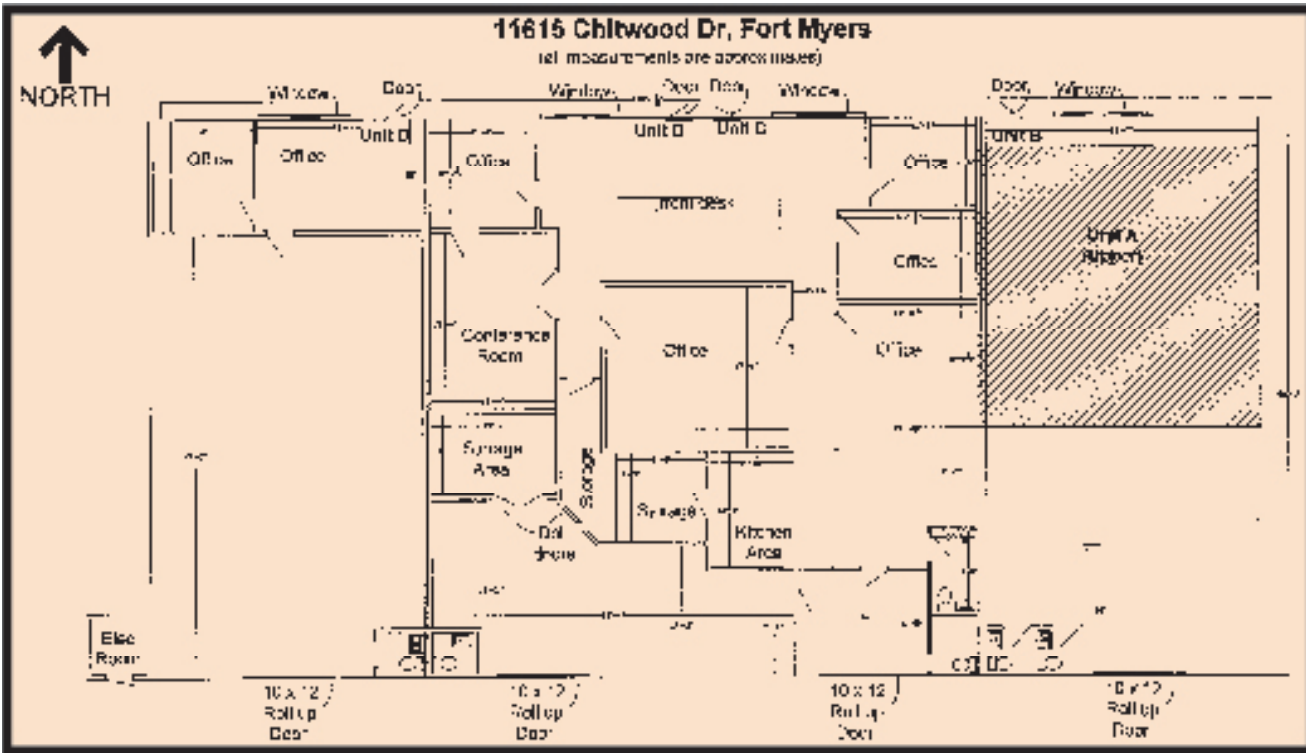
PRICE: \$1,300,000.00

PROPERTY TAXES: \$8,200.00 (2006)

COMMENTS: Includes four 1,750± sq. ft. flex bays with 10' x 12' overhead doors, 900± sq. ft. second floor office and approximately one half acre fenced yard. Flex units C & D are currently combined but can be easily separated. New roof in place. Located just off San Carlos Boulevard and south of Kelly Road. Ready to be occupied by buyer or investor.

CONTACT: HONORA' JACOBUS
PHONE: (239) 425-6024
E-MAIL: hjacobus@wa-cr.com

11615 Chitwood Drive, Fort Myers, FL 33908



The statements and figures presented herein, while not guaranteed, are secured from sources we believe authoritative. Subject to prior sale, lease, withdrawal and price change without notice.