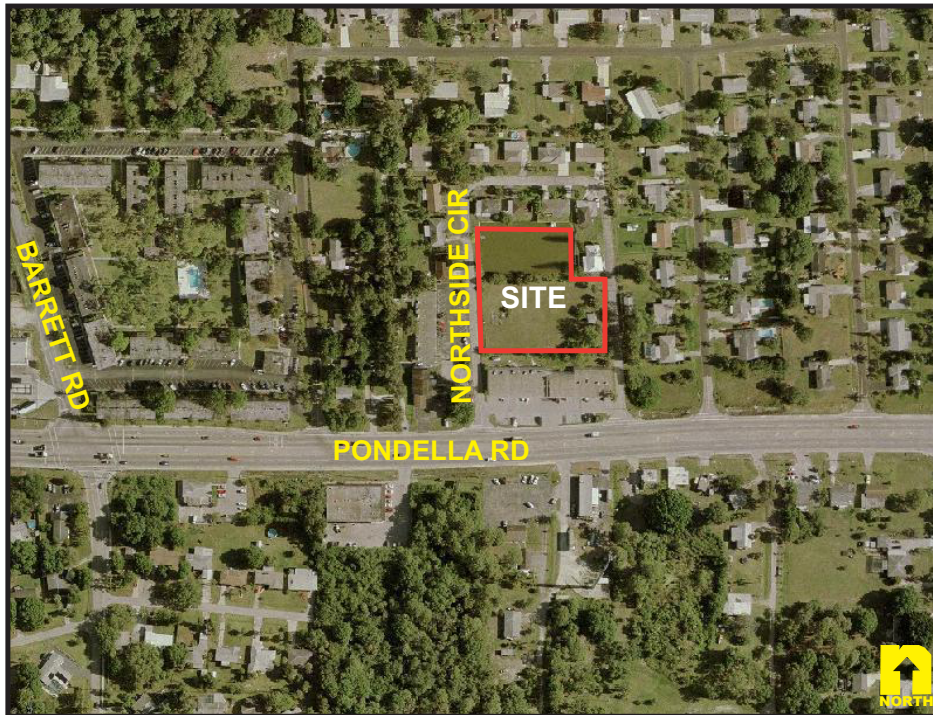




D'Alessandro
& Woodyard
COMMERCIAL TEAM

1.03± Acres in North Fort Myers



LOCATION: 3920 Northside Circle, North Fort Myers, FL 33903

SIZE: 1.03± Acres or 45,300± Sq. Ft.

ZONING: CC - Community Commercial

PRICE: \$53,000.00

COMMENTS: Located just off Pondella Road in an area of mixed commercial, professional and residential uses. This parcel has road frontage on two sides. This site is adjacent to the Northside Plaza.

CONTACT: TOM WOODYARD
FRANK D'ALESSANDRO
PHONE: (239) 454-5820
E-MAIL: tom@remaxcommercialteam.com

RE/MAX Realty Group
7980 Summerlin Lakes Drive
Suite 201
Fort Myers, Florida 33907
Office: (239) 489-0444
Fax: (239) 489-0744
www.RemaxCommercialTeam.com

000313 / 1-14-04

