



LOCATION: 11760 Bayshore Road, North Fort Myers, FL 33917

ZONING: RM-6 - Residential Multiple Family

UTILITIES: None to site

TRAFFIC COUNTS : 10,100 AADT 2003

SIZE: 1.38± Acres

2004 TAXES : \$2,875.00

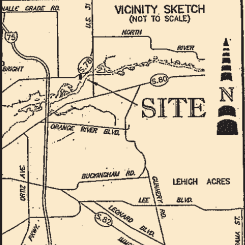
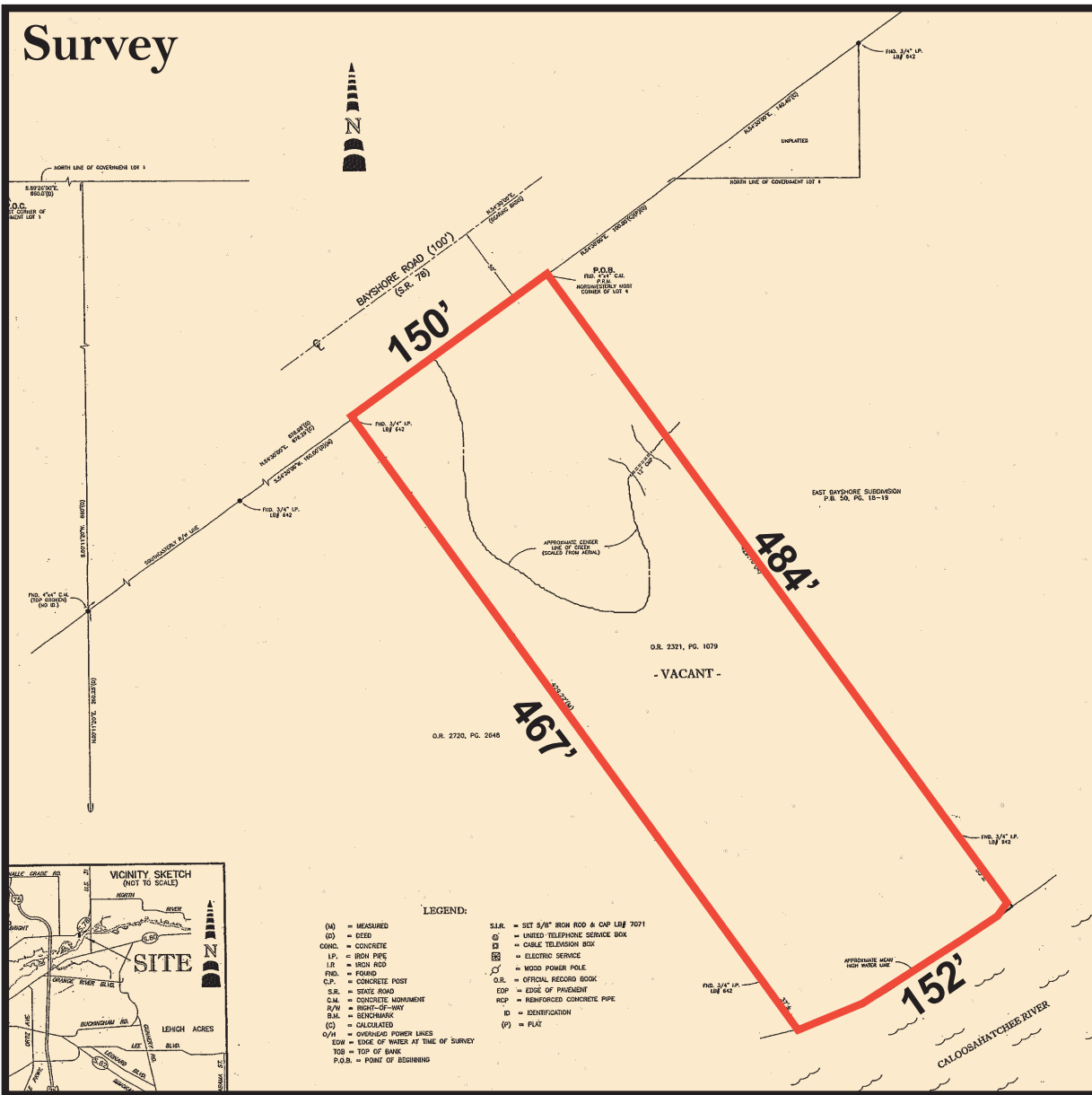
PRICE: \$775,000.00

COMMENTS: Great visibility with 152 Ft. of frontage on the river. Dock permits included. Located just 1/4 mile west of State Road 31 and across from the Lee Civic Center. See reverse side for survey and location map.

CONTACT: JOHN KREMSKI, CCIM
PHONE: (239) 425-6017
E-MAIL: john@johnkremski.com
WEB SITE: www.johnkremski.com

7800 University Pointe Drive
Suite 100, Second Floor
Fort Myers, FL 33907
Phone: (239) 425-6000
Fax: (239) 425-6001
www.DW-CR.com

Survey



- LEGEND:**
- (M) = MEASURED
 - (C) = CENTER
 - CONC. = CONCRETE
 - I.P. = IRON PIPE
 - IR = IRON ROD
 - PRG. = FOUND
 - C.P. = CONCRETE POST
 - S.R. = STATE ROAD
 - C.M. = CONCRETE MONUMENT
 - R/W = RIGHT-OF-WAY
 - B.M. = BENCHMARK
 - (C) = CALCULATED
 - O/W = OVERLAP POWER LINES
 - EDW = EDGE OF WATER AT TIME OF SURVEY
 - T.O.B. = TOP OF BANK
 - P.O.B. = POINT OF BEGINNING
 - S.I.R. = SET 5/8" IRON ROD & CAP L# 7071
 - UTS = UNITED TELEPHONE SERVICE BOX
 - CS = CABLE TELEVISION BOX
 - ES = ELECTRIC SERVICE
 - WP = WOOD POWER POLE
 - O.R. = OFFICIAL RECORD BOOK
 - EDP = EDGE OF PAVEMENT
 - RCP = REINFORCED CONCRETE PIPE
 - ID = IDENTIFICATION
 - (P) = PLAT

