

**Jetpark-Interstate Commerce Park
 Office / Warehouse Unit
 FOR LEASE**



LOCATION: 13750 Treeline Ave S., Unit 7
 Fort Myers, FL 33913

ZONING: IL - Light Industrial

UTILITIES: County Water & Sewer

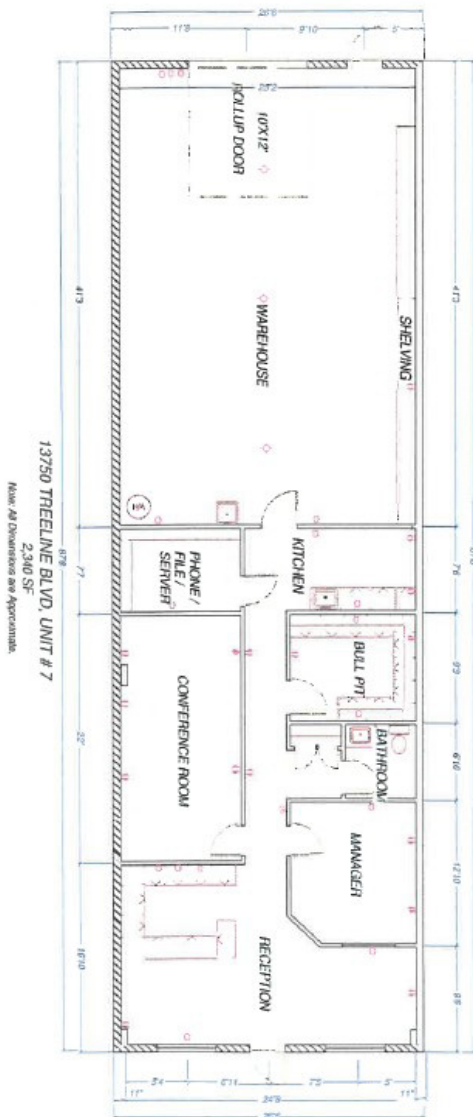
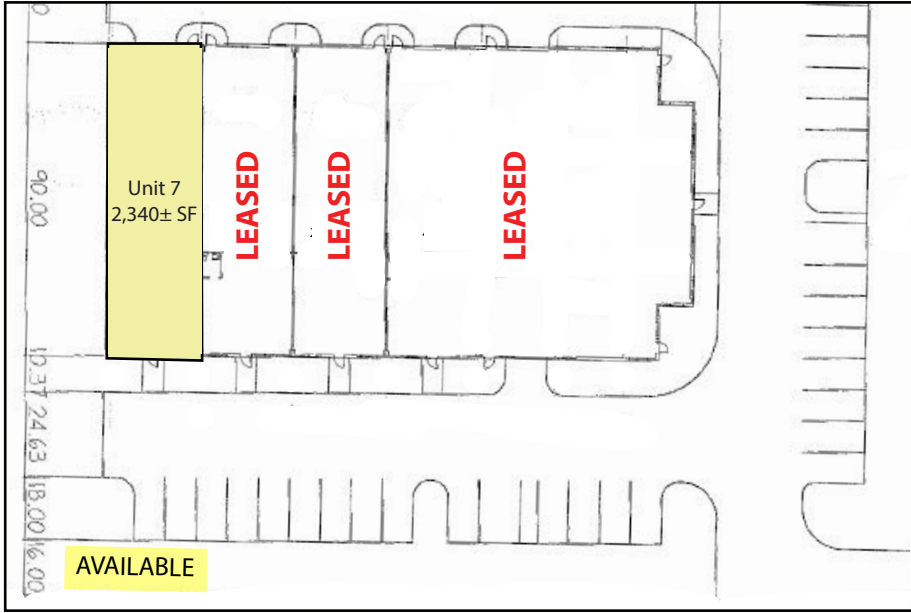
DESCRIPTION:	SIZE	RATE	OPEX	SALES TAX	MONTHLY RATE
	Unit 7 2,340± SF	\$2,925/mo (\$15.00 PSF)	\$585 /mo (\$3.00 PSF)	\$175.50/mo	\$3,685.50/mo
3 Year Minimum Lease, 4% annual increases					

COMMENTS: Great building on Treeline Ave., just south of Daniels Rd. Available November 15 2023. 12' x 14' overhead door. Minutes from I-75 and SWFL Int'l. Airport. Easy access to all Southwest Florida counties. Monthly Rate is \$3,685.50/ 3 year minimum lease / 4% annual increases.

CONTACT: TODD HOLMAN
PHONE: (239) 425-6014
E-MAIL: tholman@wa-cr.com

The statements and figures presented herein, while not guaranteed, are secured from sources we believe authoritative. Subject to prior sale, lease, withdrawal and price change without notice.

13750 Treeline Ave. S, Unit 7, Fort Myers, FL 33913



The statements and figures presented herein, while not guaranteed, are secured from sources we believe authoritative. Subject to prior sale, lease, withdrawal and price change without notice.