

**Jetpark-Interstate Commerce Park  
Office / Warehouse Unit  
FOR LEASE**



**LOCATION:** 13750 Treeline Ave S., Unit 6  
Fort Myers, FL 33913

**ZONING:** IL - Light Industrial

**UTILITIES:** County Water & Sewer

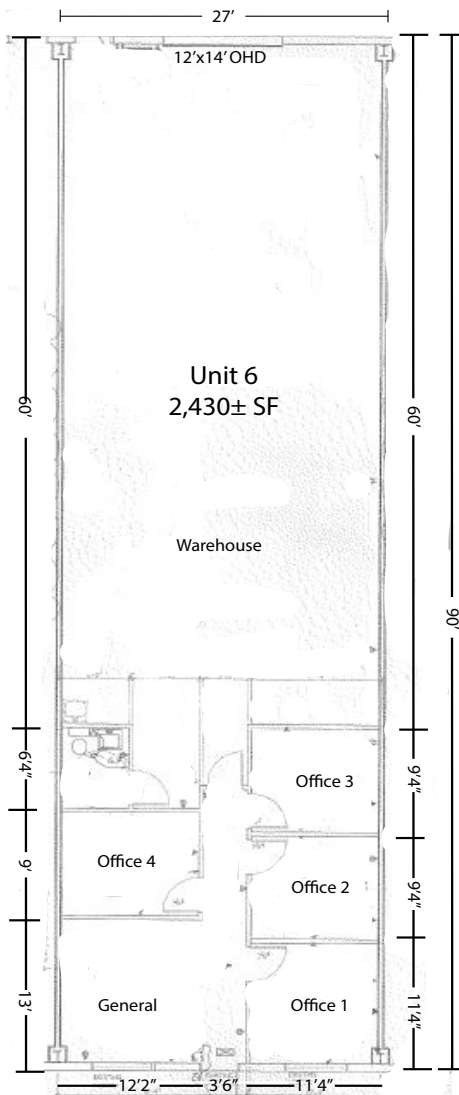
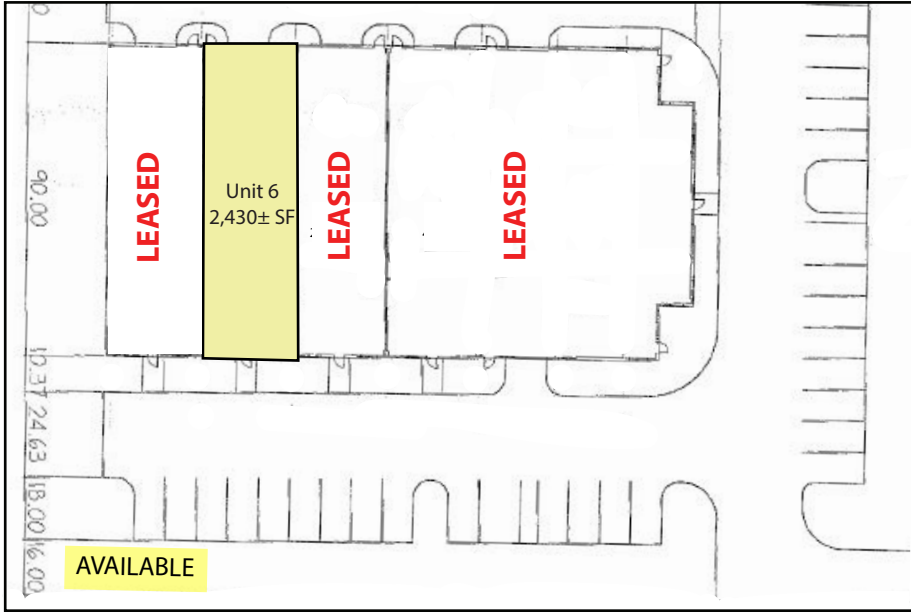
DESCRIPTION:	SIZE	RATE	*OPEX	SALES TAX	MONTHLY RATE
	Unit 6 2,430± SF	\$3,037.50/mo (\$15.00 PSF)	\$607.50 /mo (\$3.00 PSF*)	218.70/mo	\$3,863.70/mo
3 Year Minimum Lease, 4% annual increases					

**COMMENTS:** Great building on Treeline Ave., just south of Daniels Rd. Available August 2, 2023. 12' x 14' overhead door. Minutes from I-75 and SWFL Int'l. Airport. Easy access to all Southwest Florida counties. Monthly Rate is \$3,863.70, / 3 year minimum lease / 4% annual increases.

**CONTACT:** TODD HOLMAN  
**PHONE:** (239) 425-6014  
**E-MAIL:** tholman@wa-cr.com

The statements and figures presented herein, while not guaranteed, are secured from sources we believe authoritative. Subject to prior sale, lease, withdrawal and price change without notice.

# 13750 Treeline Ave. S, Unit 6, Fort Myers, FL 33913



The statements and figures presented herein, while not guaranteed, are secured from sources we believe authoritative. Subject to prior sale, lease, withdrawal and price change without notice.