

31.76± Acres on SR 80 DEVELOPMENT SITE



LOCATION: 2843 E State Road 80 & Birchwood Pkwy., LaBelle, Hendry County, Florida 33935

STRAP #: 4-29-43-02-A00-000430000

ZONING: Leisure Recreation

SIZE: 31.76± Acres

UTILITIES: Water & Sewer

PRICE: \$1,650,000

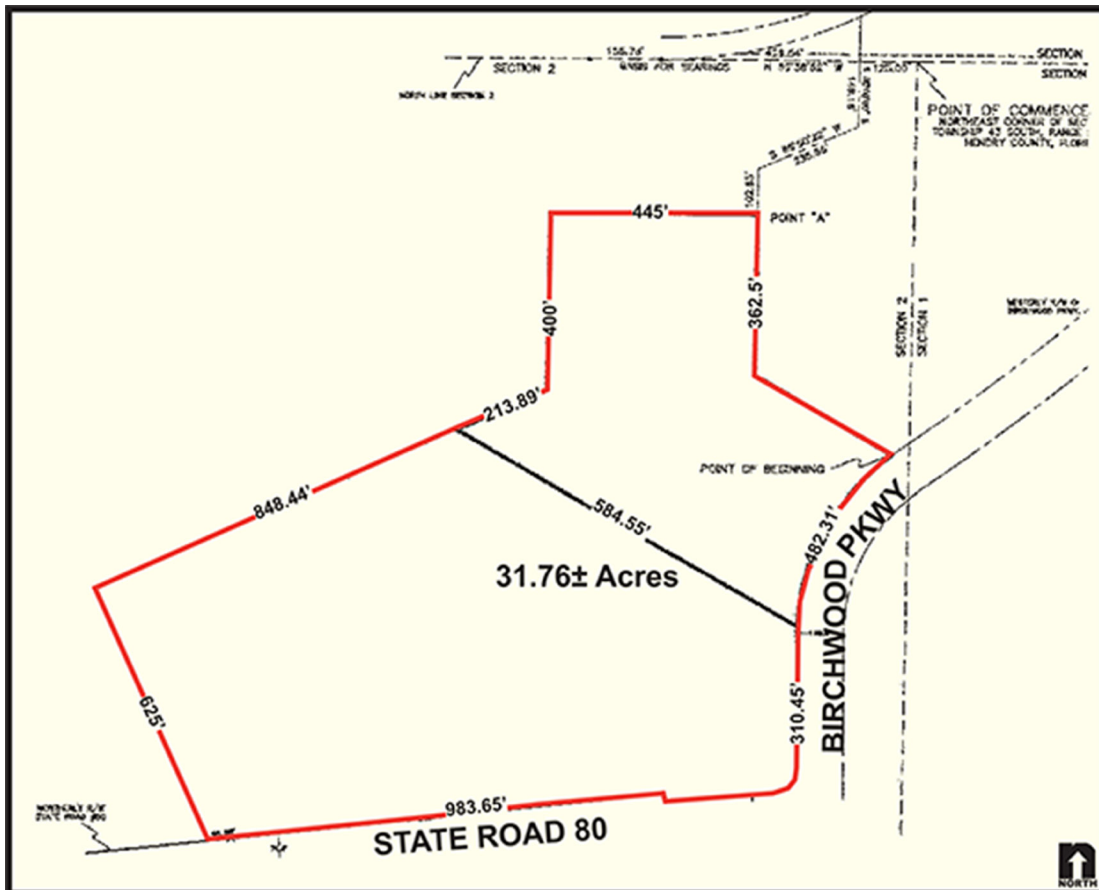
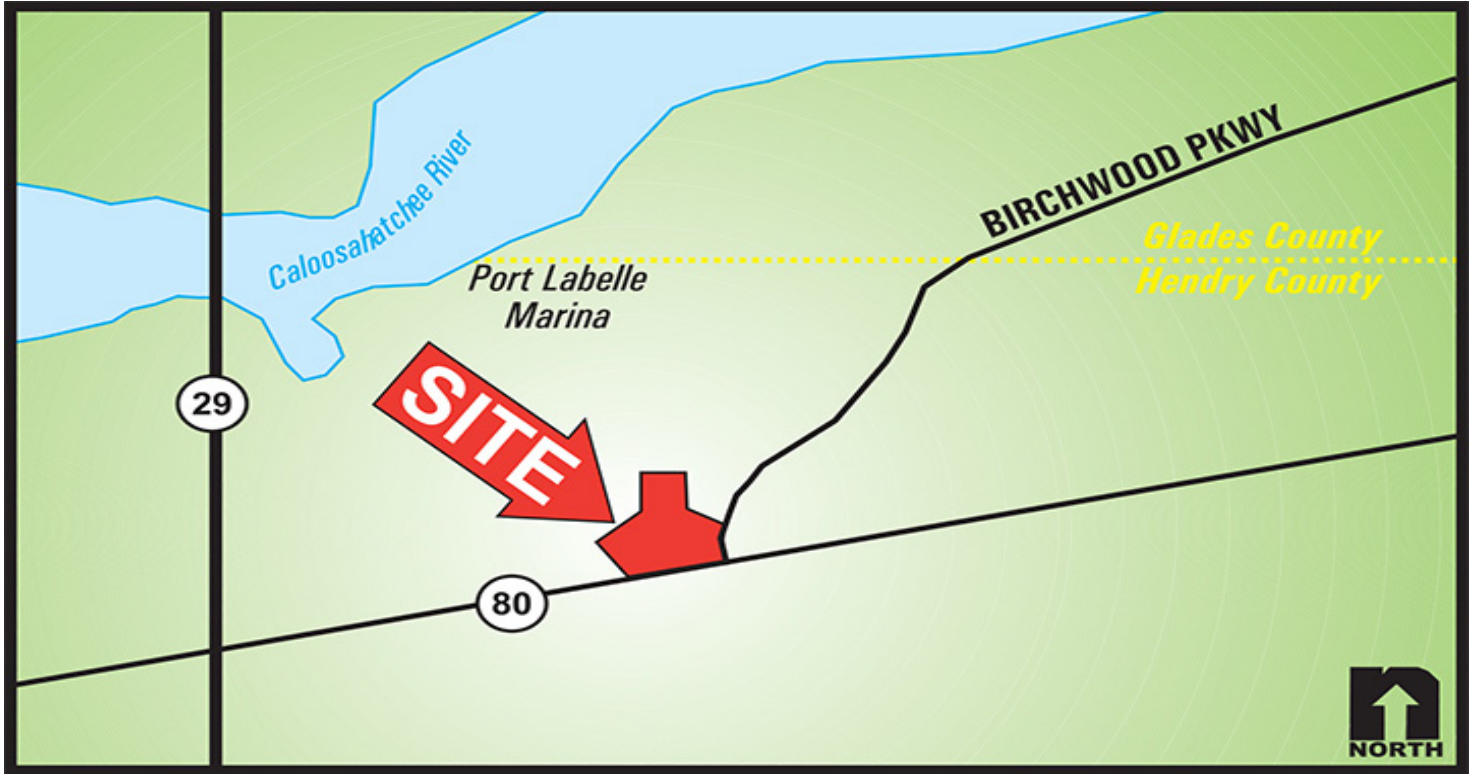
REAL ESTATE TAXES: \$2,854.83 (2022)

COMMENTS: Located in Hendry County, minutes from downtown LaBelle, this beautiful cleared corner parcel at the entryway to the Port of Labelle Marina has 984± ft. frontage on State Road 80 and 793± ft. frontage on Birchwood Parkway. Land is adjacent to the Florida Intercoastal Waterway. This property is ideal for a mix use development upon approval from Hendry County. Water & Sewer is available. May be combined with adjacent 31± acre site, providing 1,394± ft. frontage on SR80.

CONTACT: TOM WOODYARD
PHONE: (239) 425-6011
E-MAIL: twoodyard@wa-cr.com

The statements and figures presented herein, while not guaranteed, are secured from sources we believe authoritative. Subject to prior sale, lease, withdrawal and price change without notice.

2843 E SR 80 & Birchwood Pkwy., LaBelle, Florida



The statements and figures presented herein, while not guaranteed, are secured from sources we believe authoritative. Subject to prior sale, lease, withdrawal and price change without notice.