



**LOCATION:** Northwest Corner of State Road 82 & I-75, Fort Myers, FL 33905  
(5395 Dr. Martin Luther King Jr. Blvd., Fort Myers, FL 33905)

**STRAP #:** 22-44-25-P1-00068.0000

**SIZE:** 11.49± Acres

**DIMENSIONS:** South 375.38' x North 330' x West 1,708.62' x East 1,374.54'

**ZONING:** CI - Commercial Intensive & IH - Heavy Industrial

**UTILITIES:** City Water & Sewer

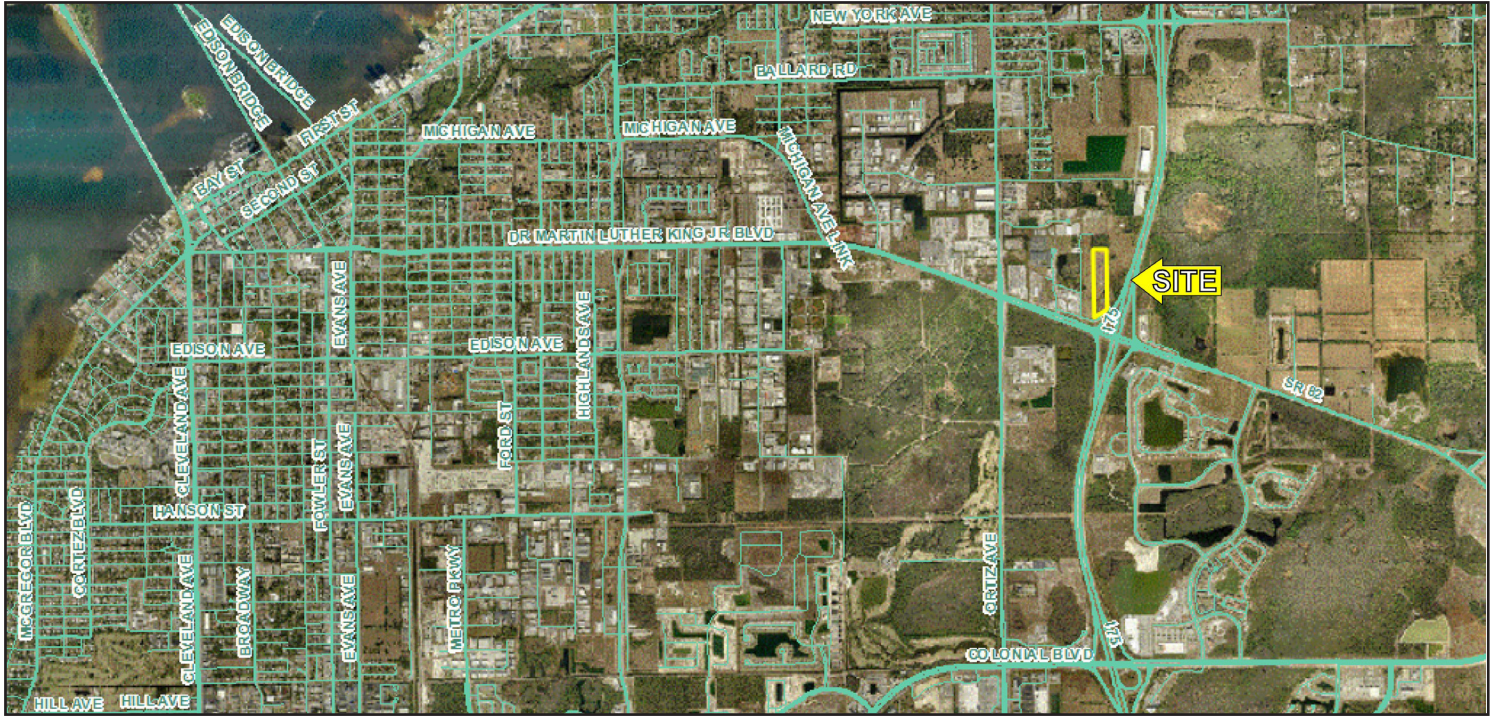
**PRICE:** \$ 5,500,000

**COMMENTS:** Located at the gateway to the City of Fort Myers, this site offers excellent visibility with its convenient interstate location, at the corner of State Road 82 & I-75, Exit 138. Steady traffic flow from Fort Myers to Lehigh Acres to Immokalee. The property has split zoning of Commercial Intensive and Heavy Industrial. This allows for a broad range of permitted uses.

**CONTACT:** TOM WOODYARD  
**PHONE:** (239) 425-6011  
**E-MAIL:** twodyard@wa-cr.com

The statements and figures presented herein, while not guaranteed, are secured from sources we believe authoritative. Subject to prior sale, lease, withdrawal and price change without notice.

# State Road 82 & I-75, Fort Myers, FL 33905



The statements and figures presented herein, while not guaranteed, are secured from sources we believe authoritative. Subject to prior sale, lease, withdrawal and price change without notice.