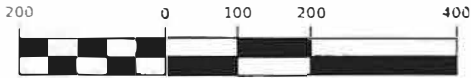
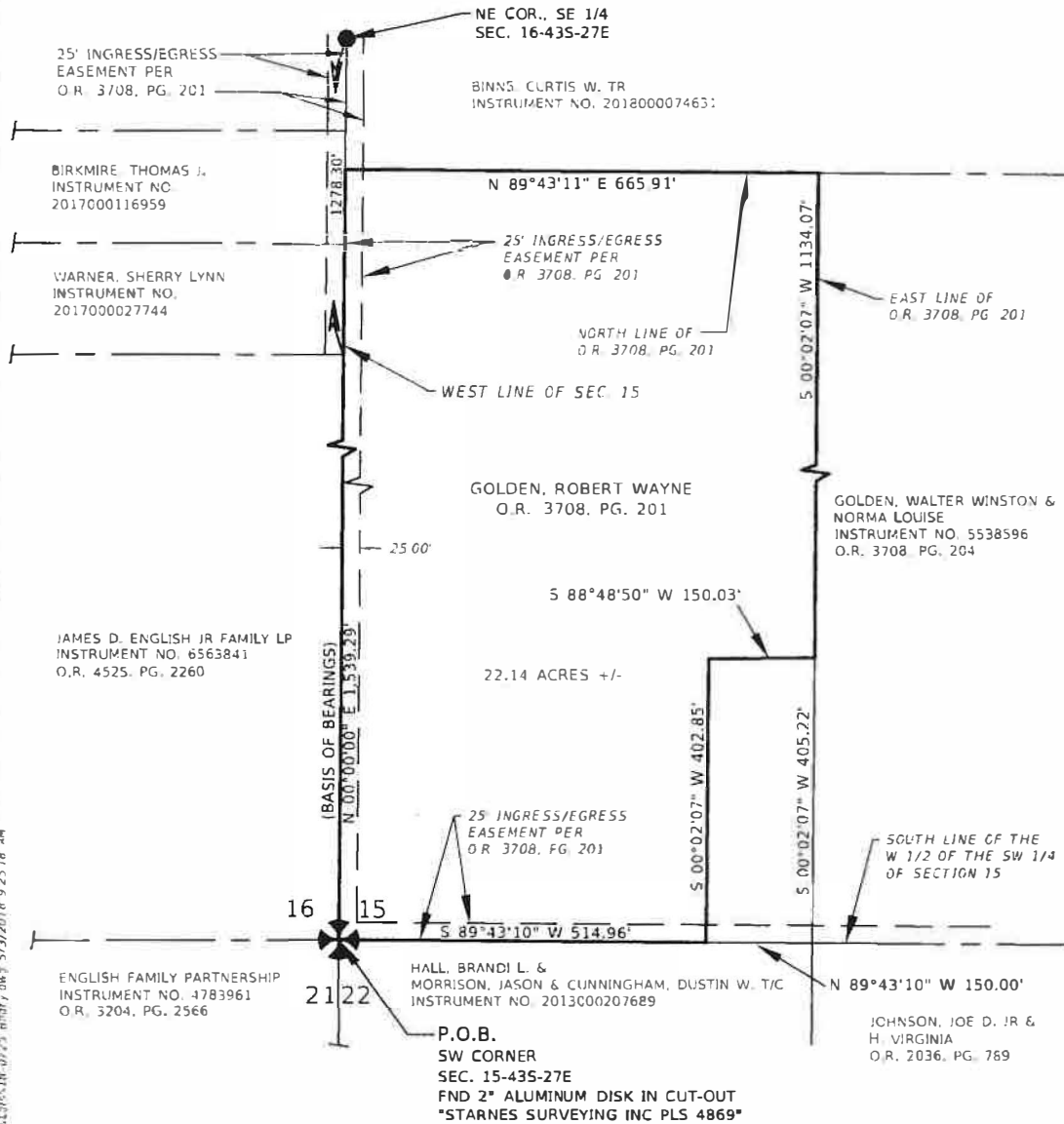


LEGAL DESCRIPTION AND SKETCH
SECTION 15, TOWNSHIP 43 SOUTH, RANGE 27 EAST,
LEE COUNTY, FLORIDA



INTENDED DISPLAY SCALE: 1"=200'



I:\active\18-0725_Humble\working\1802_RLP_180424\1802_RLP_180424.dwg 5/13/2019 9:25:18 AM

LEGEND:

- +/- = MORE OR LESS
- FND = FOUND
- INC. = INCORPORATED
- NAD = NORTH AMERICAN DATUM
- NO. = NUMBER
- O.R. = OFFICIAL RECORD BOOK
- PG. = PAGE
- P.O.B. = POINT OF BEGINNING
- PLS = PROFESSIONAL LAND SURVEYOR
- SEC. = SECTION
- U.S. = UNITED STATES

APPROVED
LDO2019-00127
Gary Rashford, Development Services Surveyor
Lee County Development Services
4/12/2019

GENERAL NOTES:

- BEARINGS ARE BASED ON DFED DESCRIPTION FROM O.R. 3708, PG. 201. DERIVING A BEARING OF N 00°00'00" E ALONG THE WEST LINE OF SECTION 15.
- NOT VALID WITHOUT BOTH SHEETS.
- ALL DIMENSIONS IN U.S. SURVEY FEET OR DECIMALS THEREOF.

AIM Engineering & Surveying, Inc.

2161 FOWLER STREET, SUITE 100
FORT MYERS, FLORIDA 33901
E-Mail: engineering@aimengr.com
FORT MYERS 239-332-4569
LICENSED BUSINESS No 3114

THIS IS NOT A SURVEY SHEET 2 OF 2

LEGAL DESCRIPTION & SKETCH
LOT SPLIT- REMAINING PARCEL SKETCH & DESCRIPTION

DRAWN: TK 02-27-2018	CHECKED: BH 04-30-2018	CLIENT: JUDY HUMBLE
FILE NAME: 18-0725 Bndry	SECTION: 15	TOWNSHIP: 43 S
RANGE: 27 E	COUNTY: LEE	PROJECT NO.: 18-0725