

7.30± Acres FOR SALE Joel Boulevard Frontage



LOCATION: 2871 Joel Boulevard, Alva, FL 33920

STRAP #: 27-43-27-00-00027.0000

ZONING: AG-2 Agricultural

SIZE: 7.30± Acres

PRICE: \$960,000

COMMENTS: Located just south of Palm Beach Boulevard (State Road 80) with 557'± frontage on Joel Boulevard. This is an area of strong residential & commercial growth. Future land use allows for a variety of services including intensive retail and fast food establishments as well as multi-family dwellings. Residential developments in the area include: Verandah, Greenbriar, Lehigh Lakes, Wellington Ranch, River Hall. May combine with 19.20± Acre site that has frontage on Palm Beach Boulevard.

CONTACT: TOM WOODYARD
PHONE: (239) 425-6011
E-MAIL: twoodyard@wa-cr.com

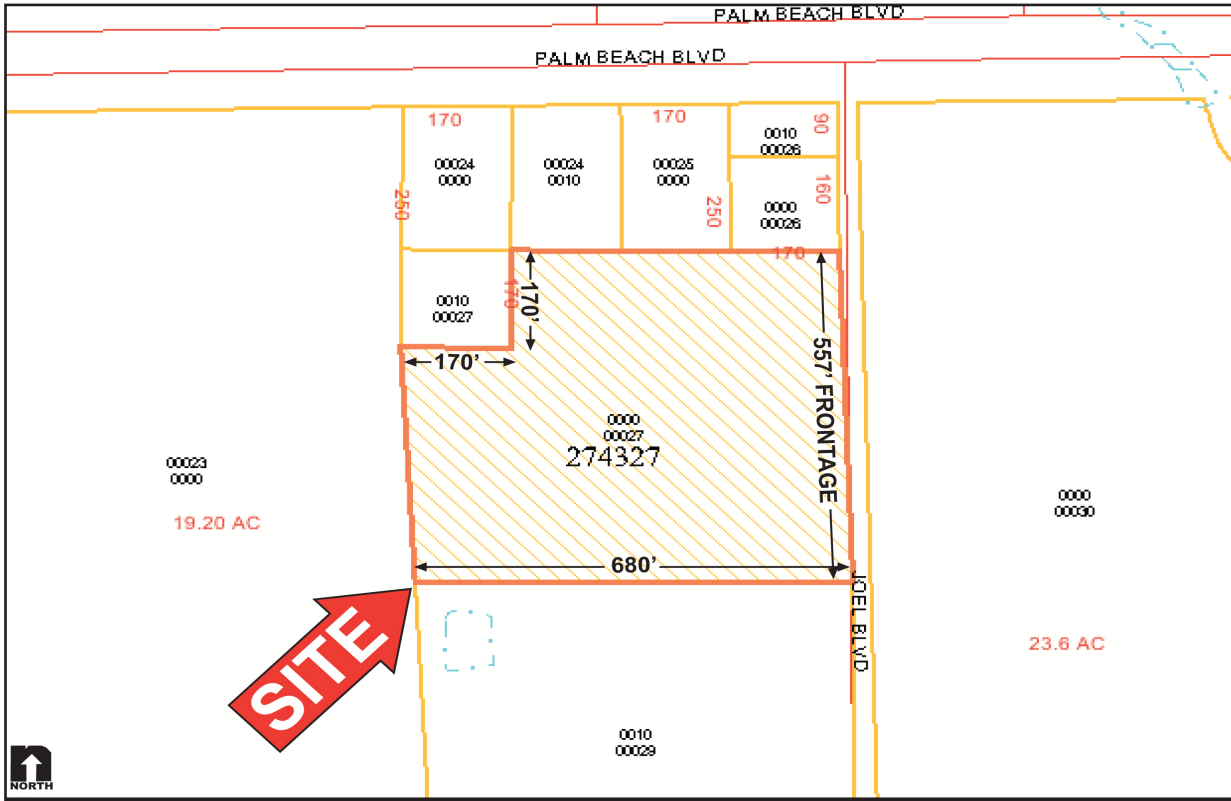
FUTURE LAND USE: Rural Village -
Highway Commercial

DIMENSIONS: 557'± Frontage X 680'± Depth

REAL ESTATE TAX: \$ 431.29 (2020)

The statements and figures presented herein, while not guaranteed, are secured from sources we believe authoritative. Subject to prior sale, lease, withdrawal and price change without notice.

2871 Joel Boulevard, Alva, FL 33920



The statements and figures presented herein, while not guaranteed, are secured from sources we believe authoritative. Subject to prior sale, lease, withdrawal and price change without notice.