



# Commerical Corners South Lehigh Acres



**LOCATION:** Parcel A 2932 Meadow Road, Lehigh Acres, FL  
Parcel B 3000 Meadow Road, Lehigh Acres, FL  
Parcel C 1062 Portland Avenue, Lehigh Acres, FL

**UTILITIES:** County water

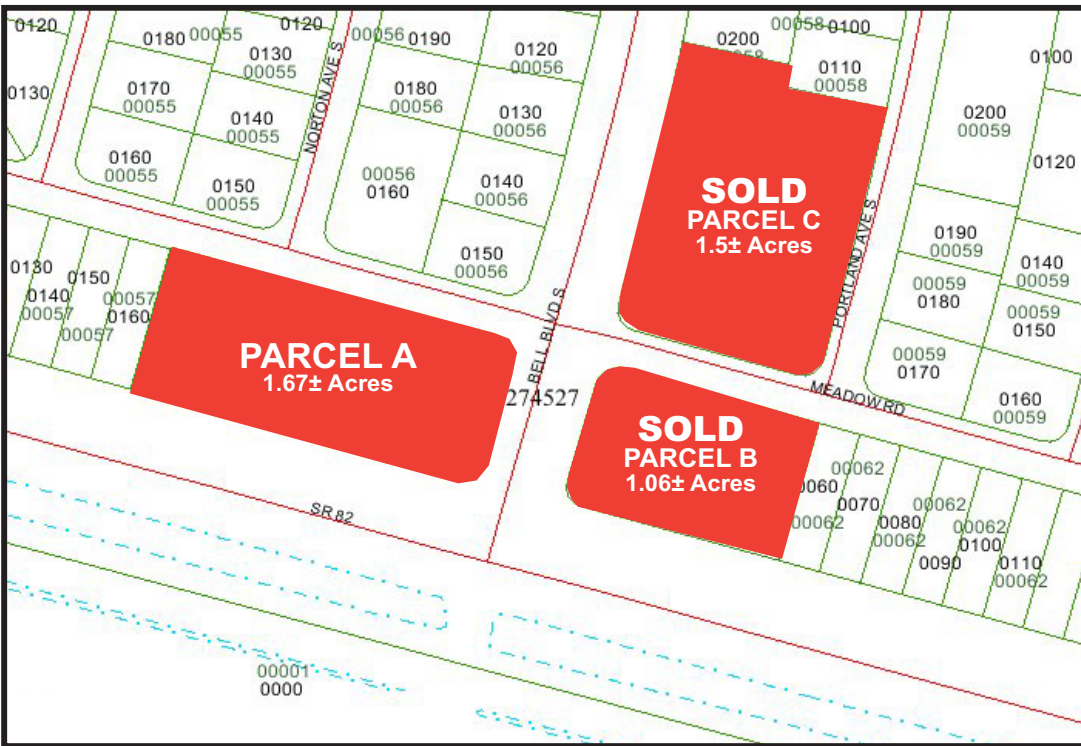
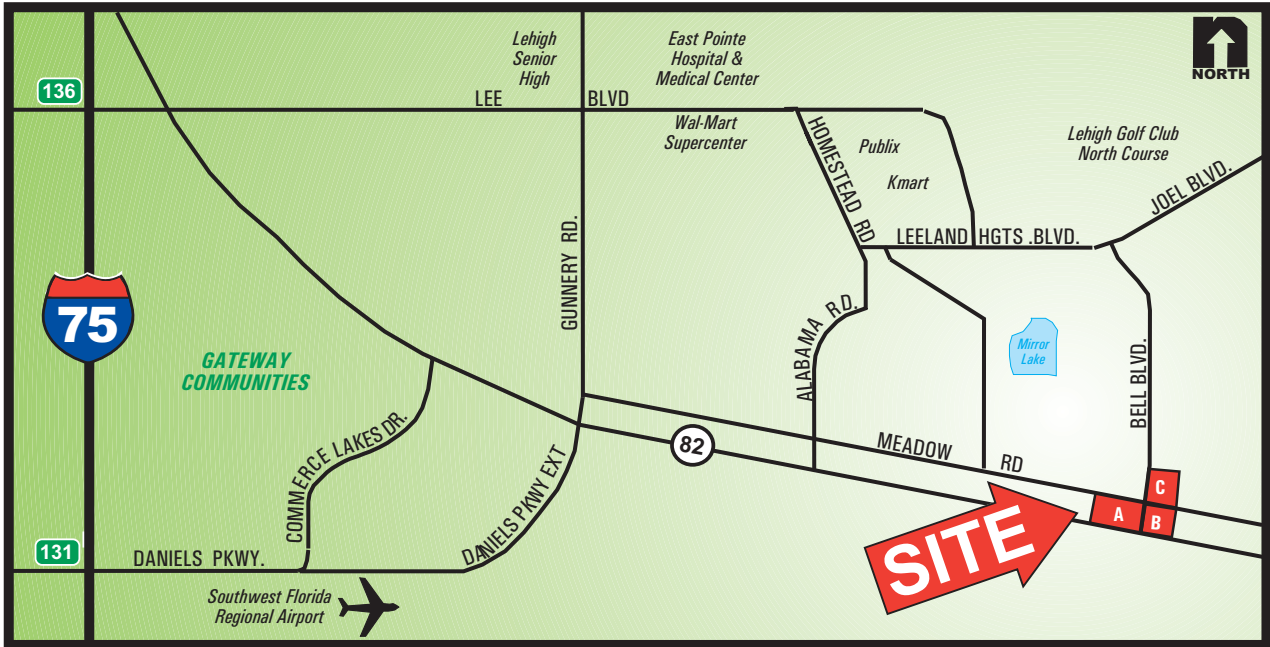
PARCEL	SIZE	ZONING	PARCEL PRICE
A	1.67 Acres	C-2	\$218,000.00 or \$3.00 PSF
B	1.06 Acres	C-2	<b>SOLD</b>
C	1.5 Acres	R-S1	

**COMMENTS:** Located on State Road 82 just south of Mirror Lakes Country Club in the northwest and northeast corners of Bell Boulevard. This area is continuing to attract new residential. Ideal for a gas station and/or a convenience store.

**CONTACT:** TOM WOODYARD  
FRANK D'ALESSANDRO  
**PHONE:** (239) 454-5820  
**E-MAIL:** tom@remaxcommercialteam.com

**RE/MAX Realty Group**  
7980 Summerlin Lakes Drive  
Suite 201  
Fort Myers, Florida 33907  
**Office:** (239) 489-0444  
**Fax:** (239) 489-0744  
[www.RemaxCommercialTeam.com](http://www.RemaxCommercialTeam.com)

000181Sold,000182,000184 / 3-17-04



**CONTACT:** TOM WOODYARD  
 FRANK D'ALESSANDRO  
**PHONE:** (239) 454-5820  
**E-MAIL:** tom@remaxcommercialteam.com

