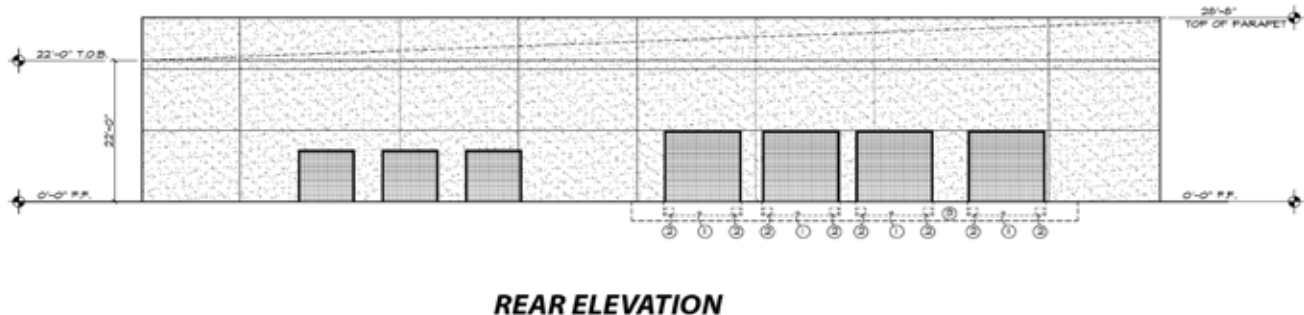
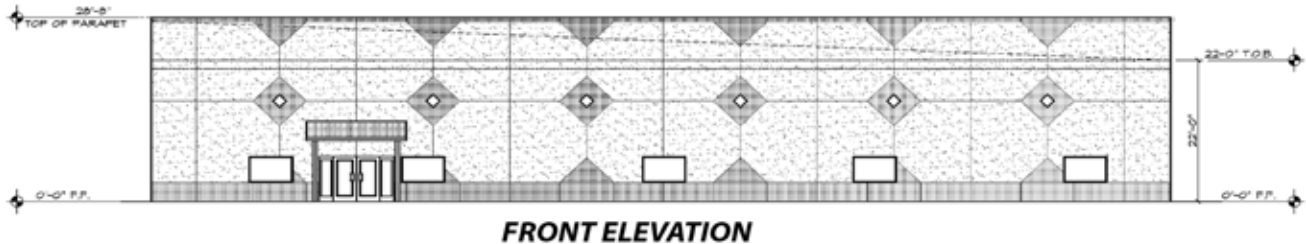


NEW CONSTRUCTION

25,300 SF±

Showroom/Warehouse

Metro & Metro Plex



LOCATION: 6150 Metro Plex Drive, Fort Myers, FL 33966

ZONING: IL - Light Industrial

UTILITIES: County Water & Sewer

SIZE: 25,300± Sq. Ft.

PARKING: 29 parking spaces.

O/H DOORS: 4 truckwell, 3 grade



LEASE RATE: Base \$7.75 PSF plus sales tax / Estimated OPEX \$1.50

TERMS: 7-10 years initial term with 3.5% annual increases

COMMENTS: Scheduled Completion - 4th Quarter 2017. METRO PARKWAY FRONTAGE. Freestanding warehouse building with 2,500 sq.ft. office. Excellent location on the corner of Metro Parkway and Metro Plex Drive, between Metro Parkway and Plantation Road, just north of Crystal Drive.

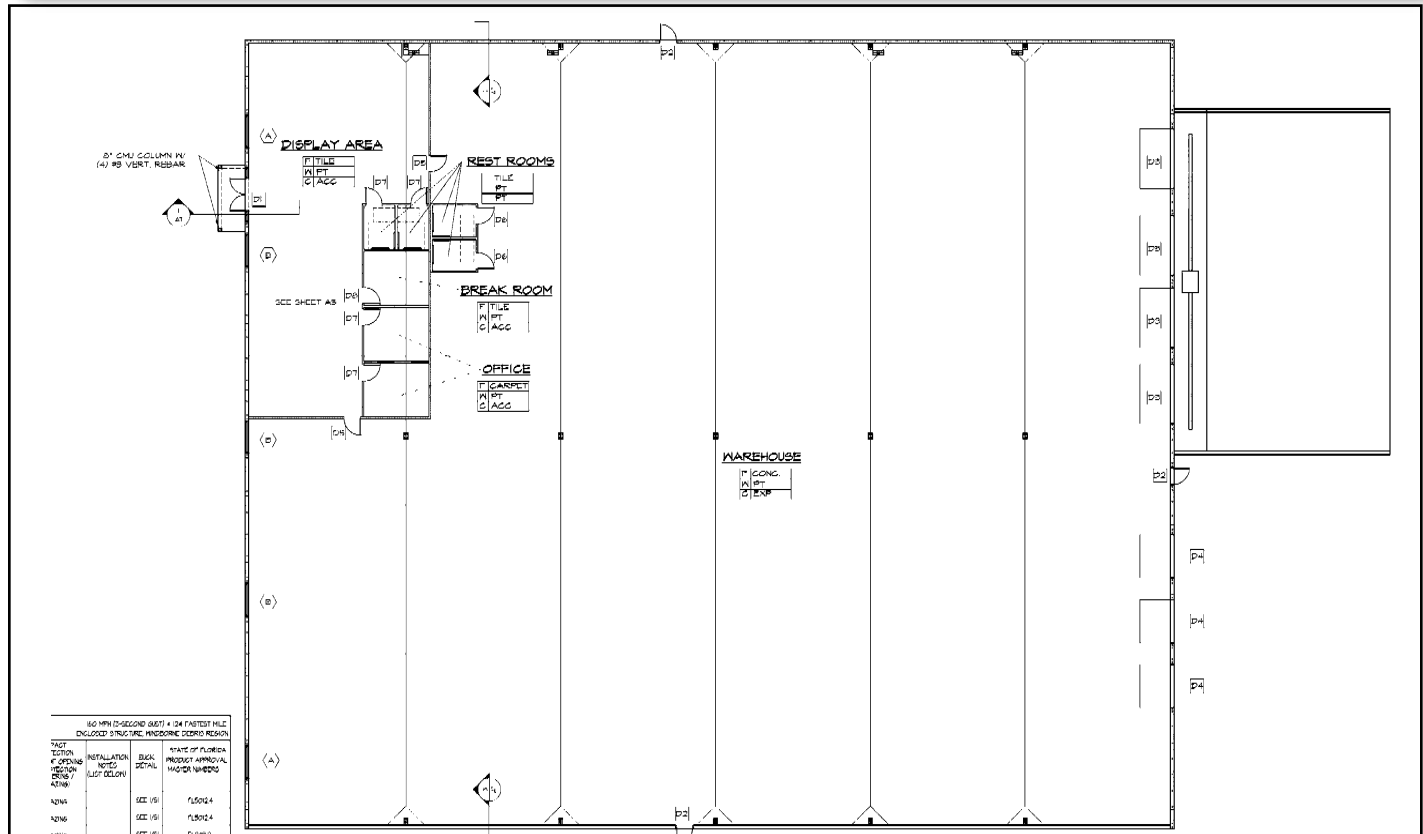
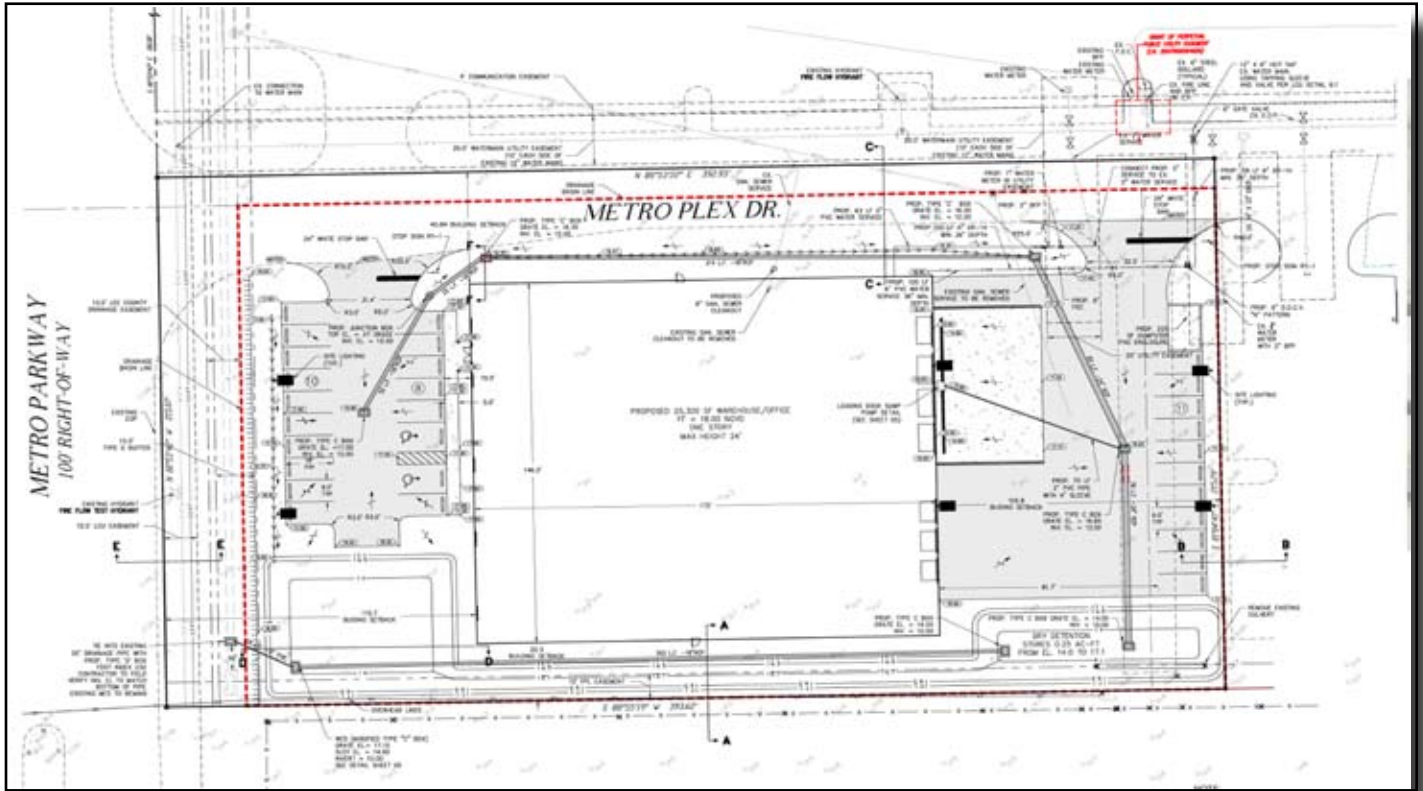
CONTACT: TODD HOLMAN

PHONE: (239) 425-6014

E-MAIL: tholman@wa-cr.com

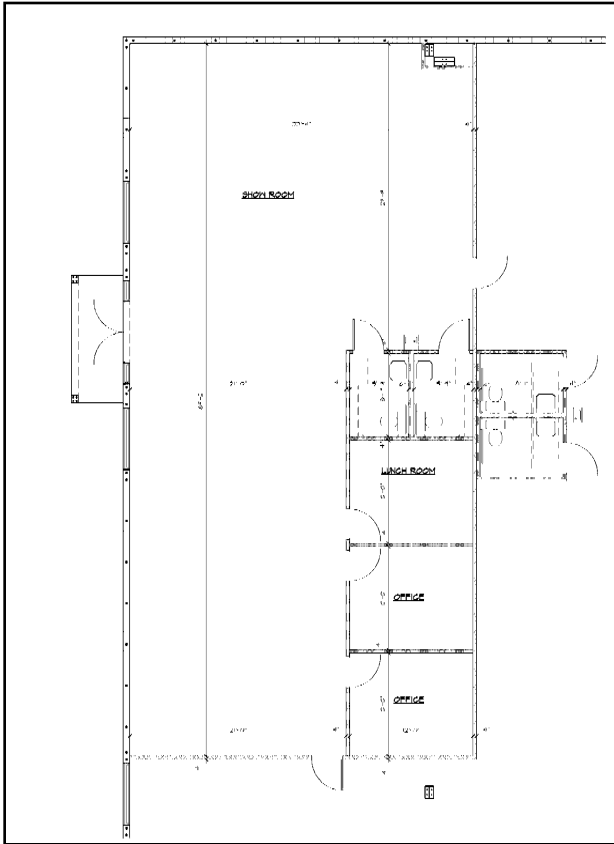
The statements and figures presented herein, while not guaranteed, are secured from sources we believe authoritative. Subject to prior sale, lease, withdrawal and price change without notice.

6150 Metro Plex Dr., Fort Myers, FL 33966



The statements and figures presented herein, while not guaranteed, are secured from sources we believe authoritative. Subject to prior sale, lease, withdrawal and price change without notice.

6150 Metro Plex Dr., Fort Myers, FL 33966



The statements and figures presented herein, while not guaranteed, are secured from sources we believe authoritative. Subject to prior sale, lease, withdrawal and price change without notice.