

1,400± Sq. Ft. Office/Warehouse
FOR LEASE
METRO PARKWAY FRONTAGE



LOCATION: 12771 Metro Parkway
 Fort Myers, FL 33966

STRAP #: 18-45-25-00-00004.0020

ZONING: IL - Light Industrial

TRAFFIC COUNTS: 22,600± (2010 AADT)

UNIT SIZE & LEASE RATE:

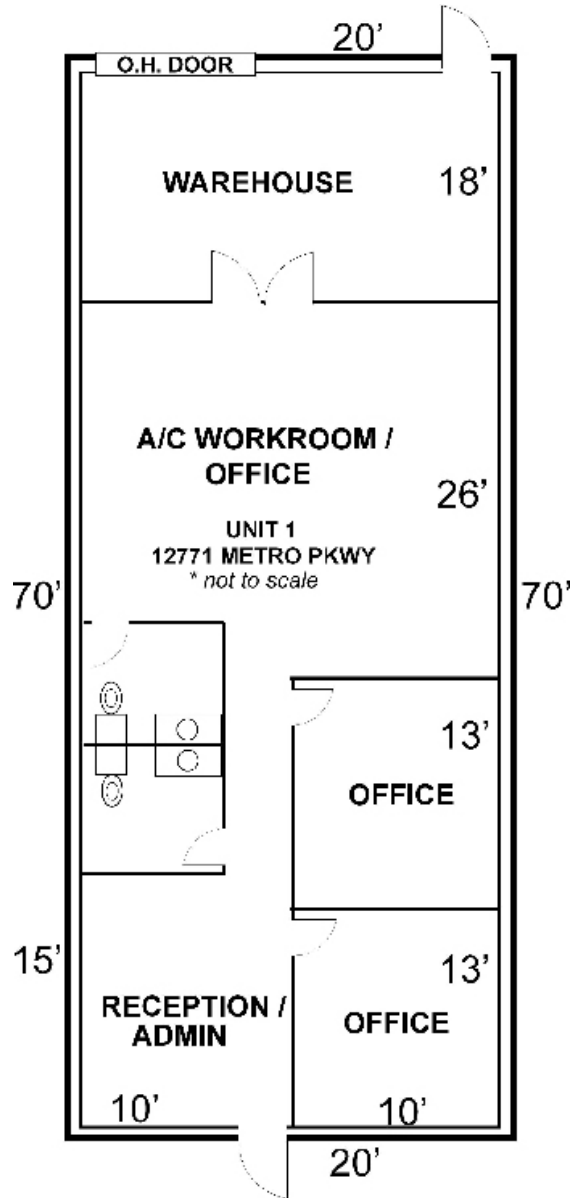
UNIT	SIZE	GROSS RENT	SALES TAX	PRICE PER MONTH
1	1,400± SF	\$ 1,050	\$ 63	\$ 1,113

COMMENTS: Office/Warehouse space for immediate occupancy. Ideal location, this building is located in an area of dynamic growth. Store front entrances with overhead doors, central air condition and ample parking. Just north of Daniels Parkway. and west of I-75, exit 131.

CONTACT: TODD HOLMAN
PHONE: (239) 425-6014
E-MAIL: tholman@wa-cr.com

The statements and figures presented herein, while not guaranteed, are secured from sources we believe authoritative. Subject to prior sale, lease, withdrawal and price change without notice.

12771 Metro Parkway, Fort Myers, FL 33966



The statements and figures presented herein, while not guaranteed, are secured from sources we believe authoritative. Subject to prior sale, lease, withdrawal and price change without notice.