



LOCATION: 18550 Nalle Road, North Fort Myers, FL 33917

STRAP #: 15-43-25-00-00006.0010

ZONING: AG-2 (Agricultural)

SIZE: 20± Acres / 665' ± Frontage x 1,310' ± Deep

UTILITIES: City Water/Septic

PRICE: CALL FOR ADDITIONAL DETAILS

COMMENTS: Located in North Fort Myers, just East of I-75 (Exit 143) and North of Bayshore Rd. 665' ± frontage on Nalle Rd., Zoned AG2 with Future Land Use is outlying subdivision which allows up to 3 units per acres - ideal for private gated subdivision.

CONTACT: TOM WOODYARD
PHONE: (239) 425-6011
E-MAIL: twoodyard@wa-cr.com

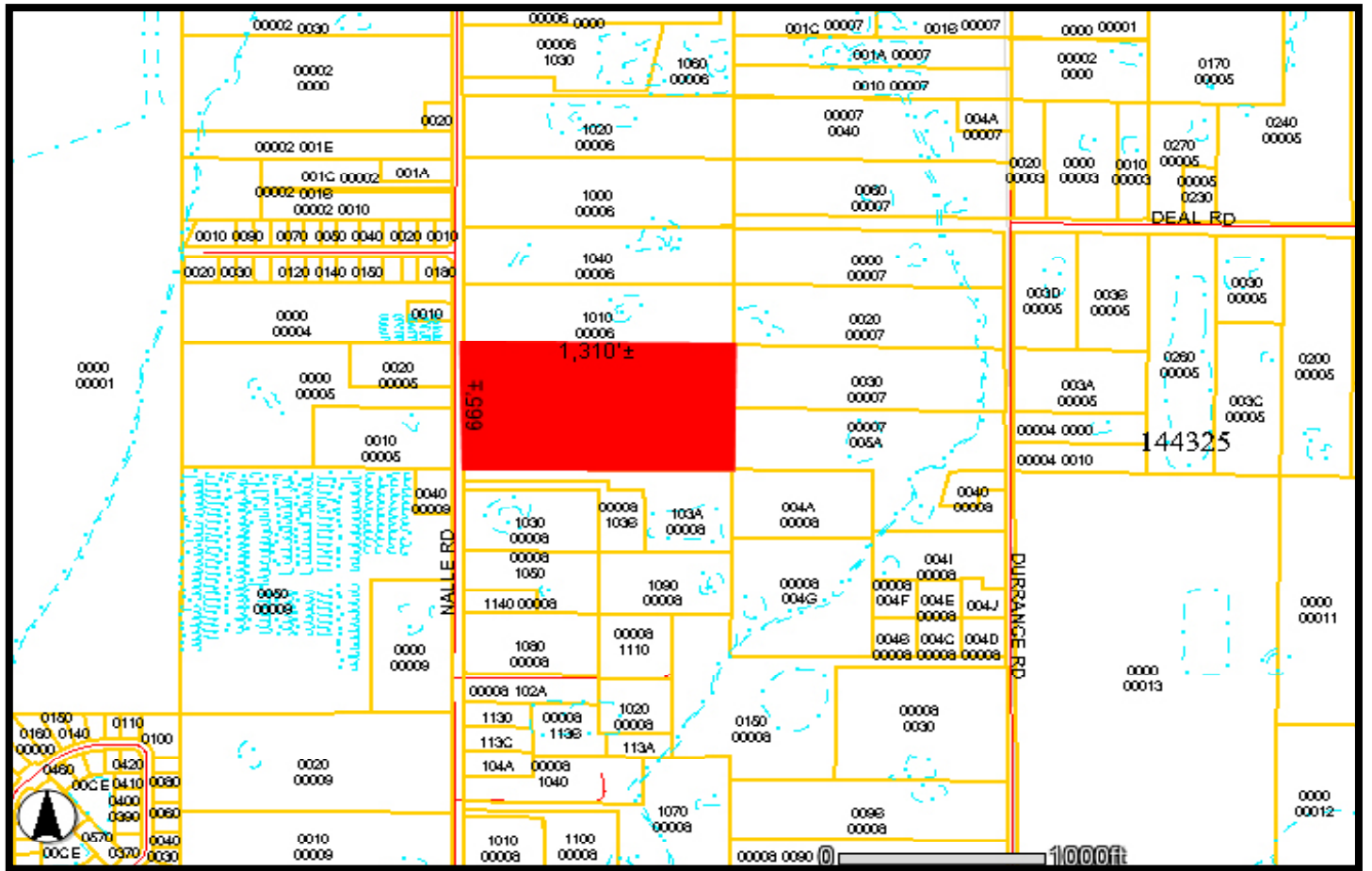
The statements and figures presented herein, while not guaranteed, are secured from sources we believe authoritative. Subject to prior sale, lease, withdrawal and price change without notice.

Pinebrook Park, 12995 South Cleveland Ave., Suite 219, Fort Myers, FL 33907 • P.O. Box 60151, Fort Myers, FL 33906

002061 / 5-9-14

(239) 425-6000 • (239) 425-6001 Fax • www.WA-CR.com

18550 Nalle Road, North Fort Myers, FL



The statements and figures presented herein, while not guaranteed, are secured from sources we believe authoritative. Subject to prior sale, lease, withdrawal and price change without notice.