

3,500± Sq. Ft. Commercial Lot Downtown Cape Coral



LOCATION: 612 S.E. 47th Terrace, Cape Coral, FL. 33904

STRAP #: 12-45-23-C3-00080.0810

UTILITIES: City Water and Sewer

ZONING: C-DE (Commercial)

2010 TAXES: \$ 270

FUTURE

LAND USE : ID - Intensive Development

SIZE: 25'± Frontage (S.E. 47th Ter.)
140' Depth

PRICE: \$ 25,000

COMMENTS: 3,500± Sq. Ft. commercial lot with 25' frontage on S.E. 47th Terrace. Future land use of Intensive Development and Commercial-Downtown Edge Zoning allow for a broad range of commercial uses. Located in the heart of Cape Coral, just north of Cape Coral Parkway. This location offers quick and easy access to the surrounding major corridors.

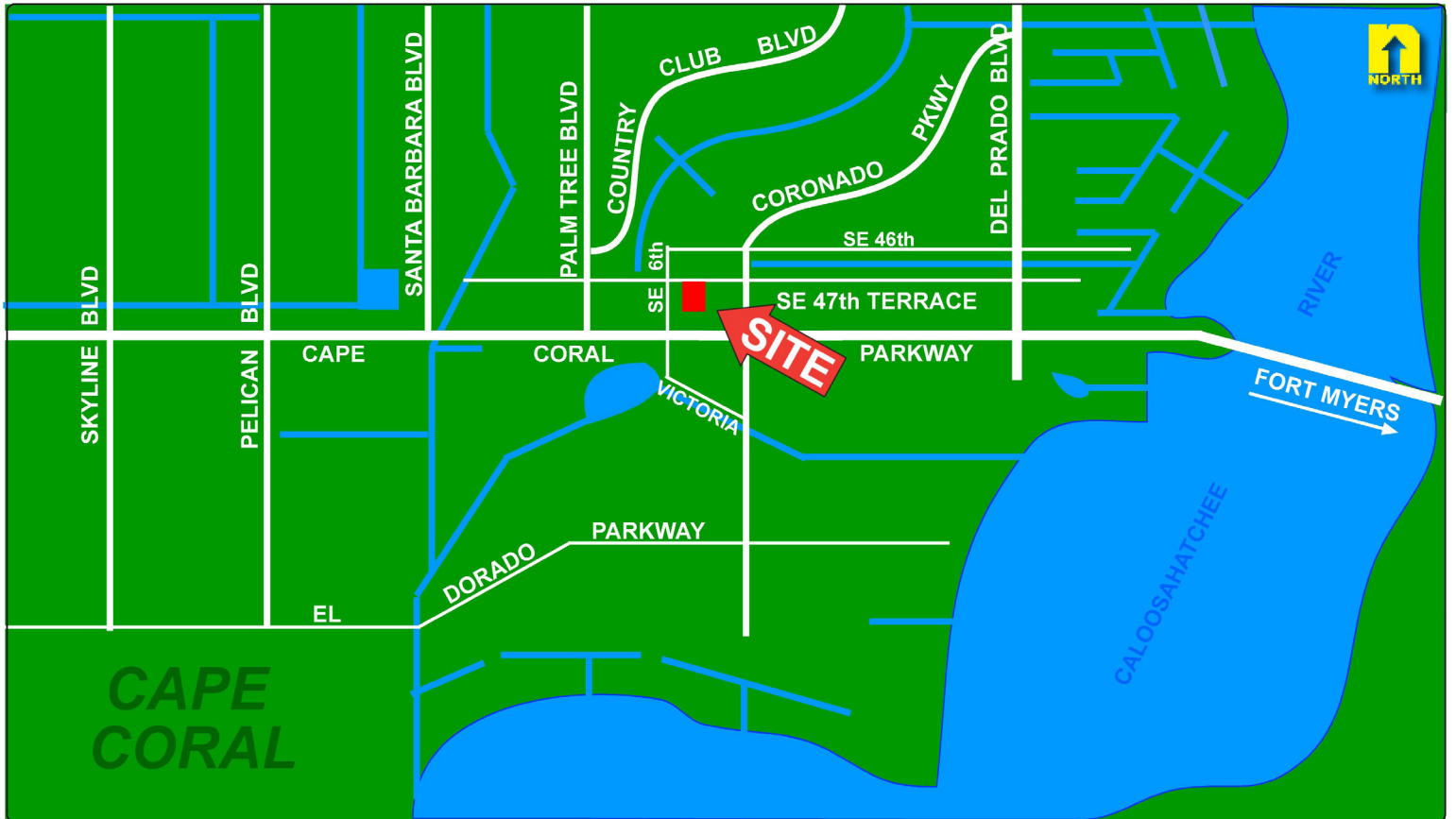
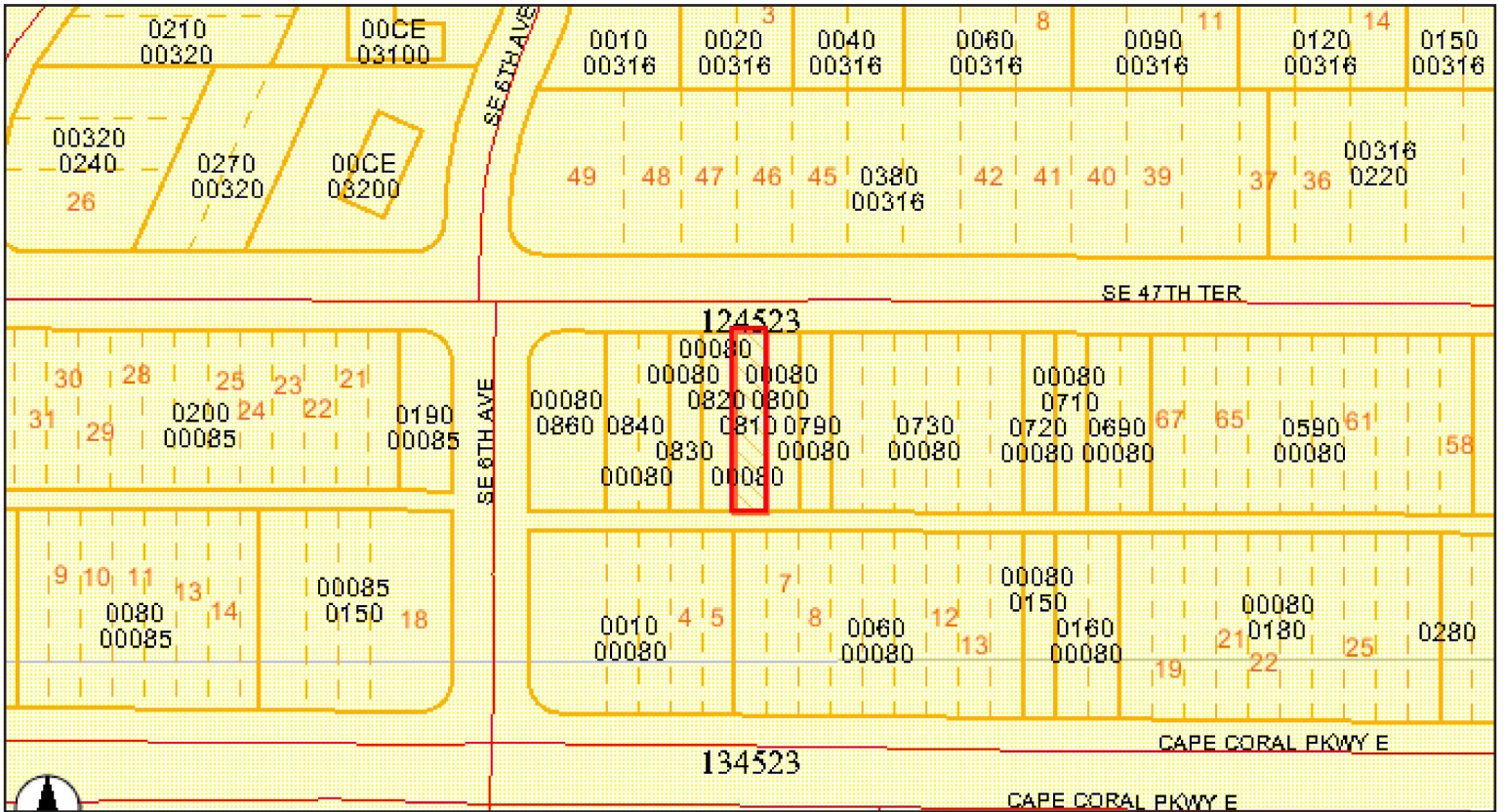
CONTACT: TOM WOODYARD

PHONE: (239) 425-6011

E-MAIL: twoodyard@wa-cr.com

The statements and figures presented herein, while not guaranteed, are secured from sources we believe authoritative. Subject to prior sale, lease, withdrawal and price change without notice.

612 S.E. 47th Terrace, Cape Coral, FL. 33904



The statements and figures presented herein, while not guaranteed, are secured from sources we believe authoritative. Subject to prior sale, lease, withdrawal and price change without notice.