

# Arielle Medical Center Professional/Medical Condo FOR SALE



**LOCATION:** 14171 Metropolis Avenue, Unit 203  
Fort Myers, FL 33912

**STRAP #:** 30-45-25-03-00000.2030

**ZONING:** CPD

**PARKING:** 54± Spaces

**SIZE:** 1,395± Sq. Ft.

**2010 TAXES:** \$ 1,943

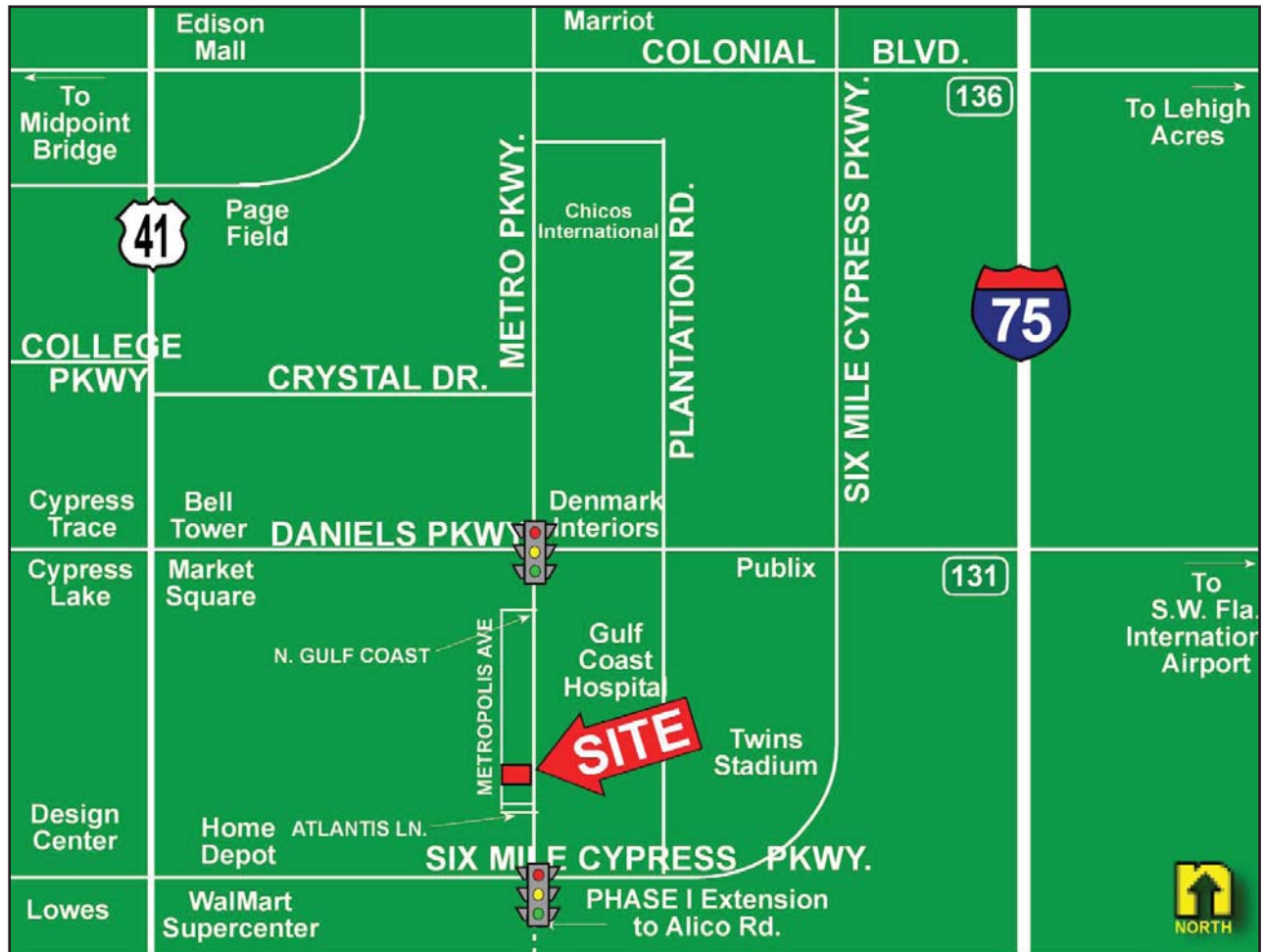
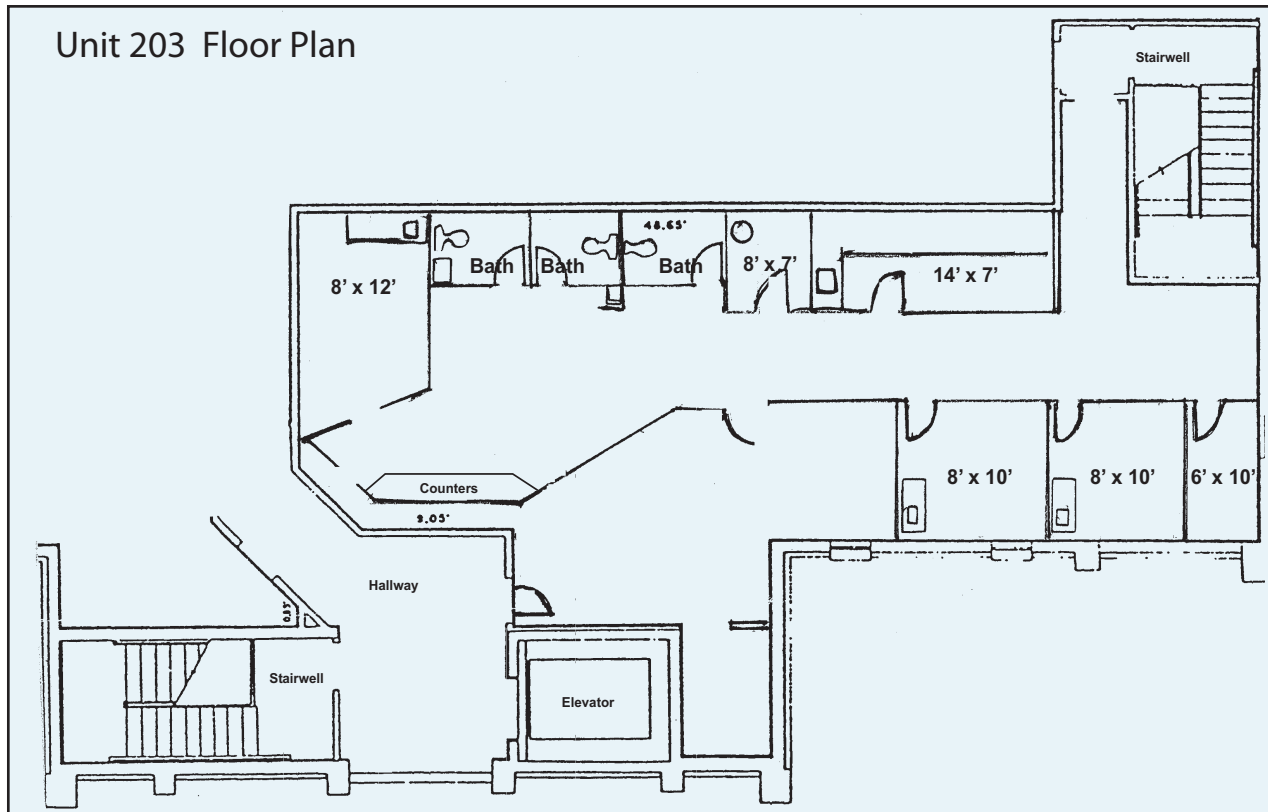
**PRICE:** \$ 145,000

**COMMENTS:** Arielle Medical Center is a two-story professional office building with elevator. Property features 54± parking spaces and is conveniently located to the new Gulf Coast Hospital. Frontage on Metro Parkway allows ease of access to major corridors, including US41 and I-75. Condo suite makes an excellent lab, chiropractic or small diagnostic facility. Move in now and relocate your office near the new Hospital.

**CONTACT:** TOM WOODYARD  
**PHONE:** (239) 425-6011  
**E-MAIL:** [twoodyard@wa-cr.com](mailto:twoodyard@wa-cr.com)

The statements and figures presented herein, while not guaranteed, are secured from sources we believe authoritative. Subject to prior sale, lease, withdrawal and price change without notice.

# 14171 Metropolis Avenue, Unit 203, Fort Myers, FL 33912



The statements and figures presented herein, while not guaranteed, are secured from sources we believe authoritative. Subject to prior sale, lease, withdrawal and price change without notice.