

**5,130± SF Warehouse/Office**  
**.85± Acres of Land**  
**Fenced Yard FOR SALE**



**LOCATION:** 11820 Lacy Lane,  
Fort Myers, FL. 33966

**STRAP #:** 07-45-25-03-00000.0270

**ZONING:** IL - Light Industrial

**SIZE:** Building: 5,130± Sq. Ft.  
Land: .85± Acres

**UTILITIES:** County Water and Sewer

**2010 TAXES:** \$ 5,134±

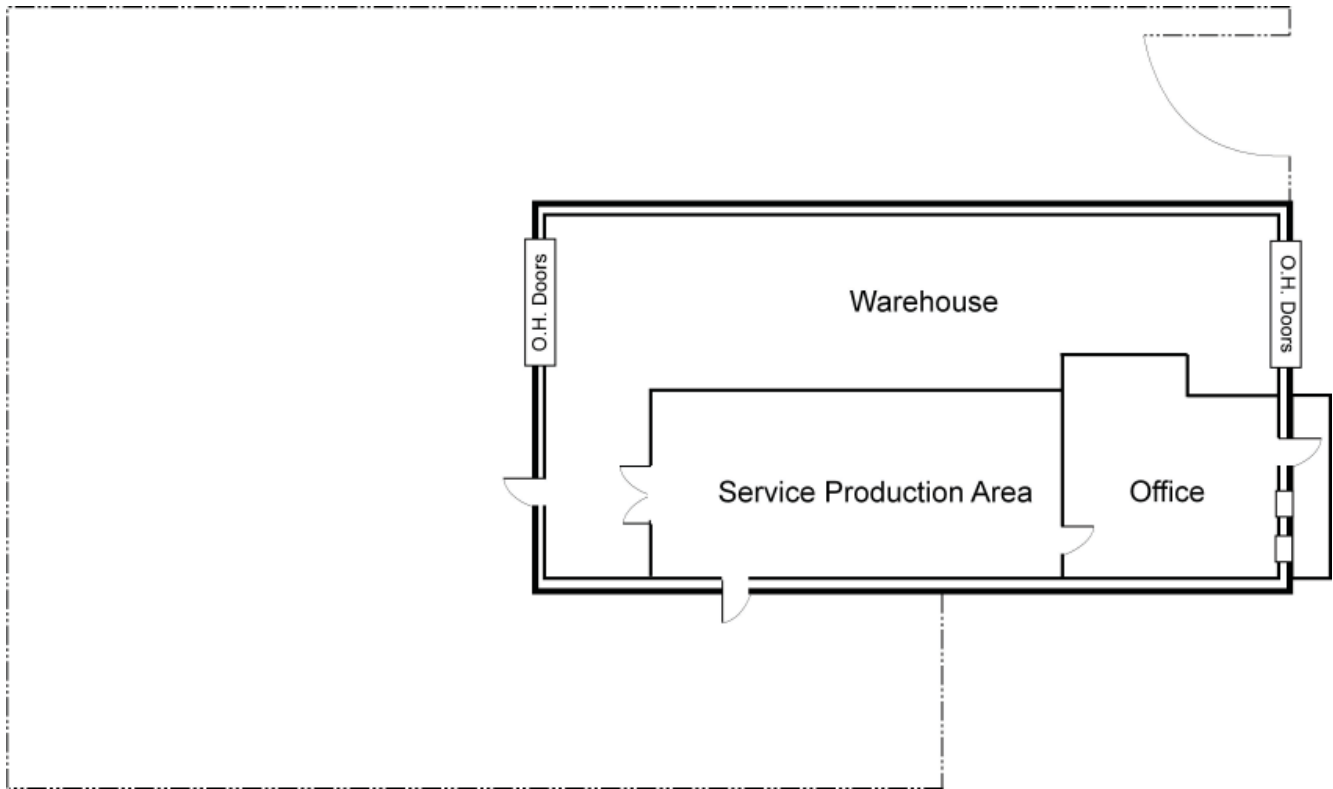
**PRICE:** \$ 251,370

**COMMENTS:** 5,130± Sq. Ft. Warehouse/Office on .85± Acres of Land. Central location just off Metro Parkway allows quick access to Metro Parkway, Plantation Road, Veronica S. Shoemaker Boulevard, Colonial Boulevard, Daniels Parkway, and Interstate 75. Very usable and efficient office and air conditioned production area. LARGE YARD AREA BEHIND BUILDING FOR OUTSIDE STORAGE OF TRAILERS AND VEHICLES. Located on Lacy Lane, east of Metro Parkway, and north of Daniels Parkway, I-75 exit 131.

**CONTACT:** TODD HOLMAN  
**PHONE:** (239) 425-6014  
**E-MAIL:** [tholman@wa-cr.com](mailto:tholman@wa-cr.com)

The statements and figures presented herein, while not guaranteed, are secured from sources we believe authoritative. Subject to prior sale, lease, withdrawal and price change without notice.

# 11820 Lacy Lane, Fort Myers, Florida 33966



The statements and figures presented herein, while not guaranteed, are secured from sources we believe authoritative. Subject to prior sale, lease, withdrawal and price change without notice.