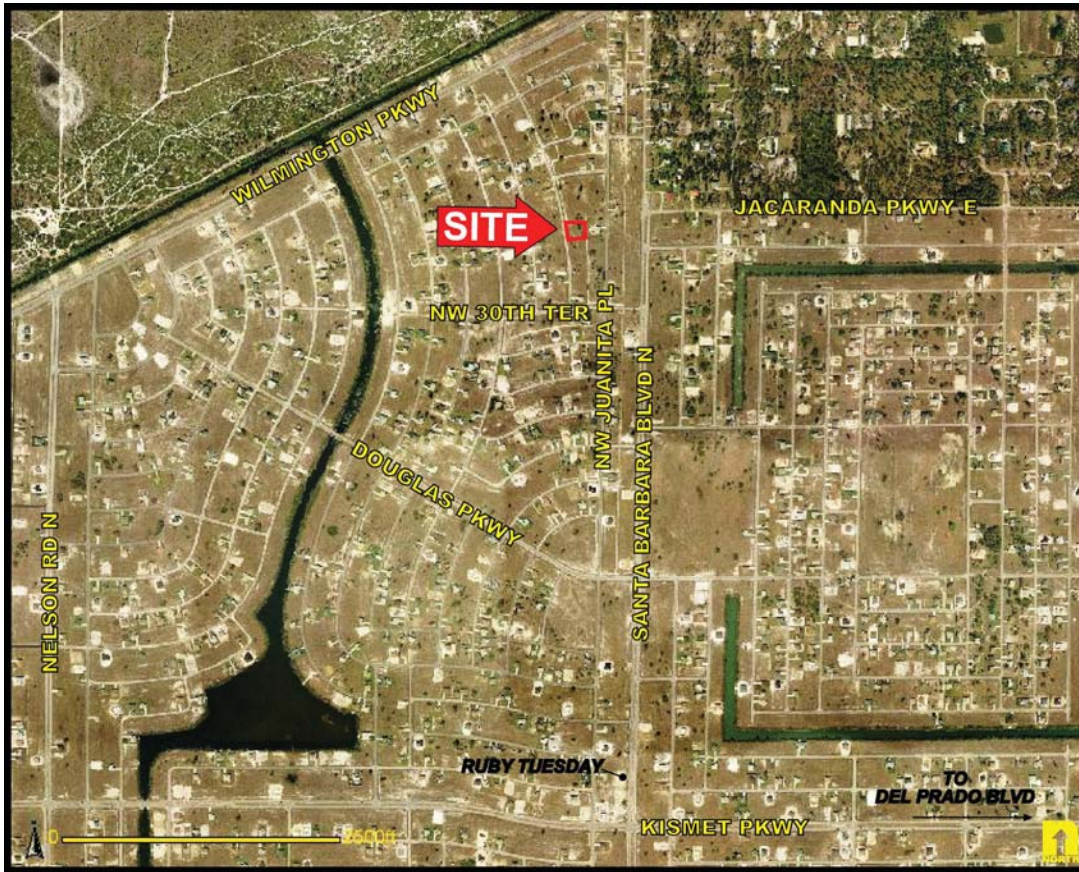


.51± Acres - Future Commercial Site
NW Cape Coral, FL



LOCATION: 3045 NW 1st Avenue, Cape Coral, FL 33993

STRAP #: 26-43-23-C2-02770.0150

ZONING: R1B - Residential

FUTURE LAND USE: CP - Commercial Professional

SIZE: .51± Acres or 22,311± Sq. Ft.

DIMENSIONS: 152.76'± - Frontage
166.92'± - Depth

PRICE: \$223,110 or \$10.00 PSF

COMMENTS: SELLER FINANCING AVAILABLE - .51± future commercial/professional site. Property is located on 1st Avenue, just off Wilimington Parkway near Santa Barbara Boulevard and North of Kismet Parkway.

CONTACT: TOM WOODYARD
PHONE: (239) 425-6011
E-MAIL: twoodyard@wa-cr.com

CONTACT: CARRIE VINCENT
PHONE: (239) 425-6032
E-MAIL: cvincent@wa-cr.com

The statements and figures presented herein, while not guaranteed, are secured from sources we believe authoritative. Subject to prior sale, lease, withdrawal and price change without notice.

