

For Lease Professional / Medical Space



LOCATION: 14090 Metropolis Avenue, Fort Myers, FL 33912

STRAP #: 30-45-25-01-00000.0110

ZONING: CPD - Commercial Planned Development

SIZE:

| | |
|--------|---------|
| Unit 4 | 600± SF |
| Unit 5 | 900± SF |

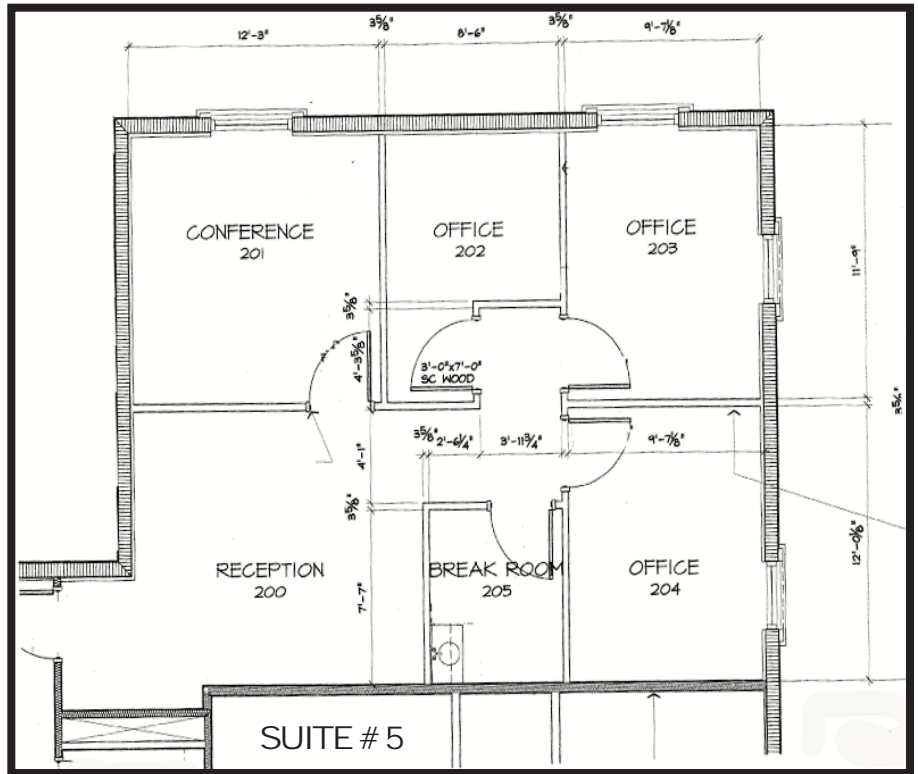
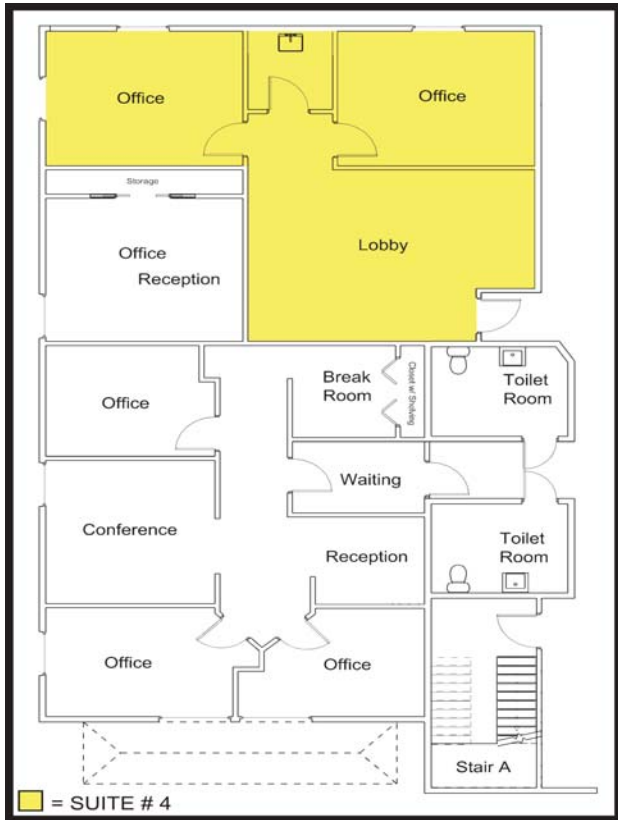
LEASE RATE: \$20.00 Per Sq. Ft. plus \$5.00 Per Sq. Ft. CAM

COMMENTS: New 7,000± Sq. Ft. building in the growing Metro Parkway area. Only 2 office remain. Ideal for those smaller users. **All impact fees paid!**

CONTACT: TOM WOODYARD
PHONE: (239) 425-6011
E-MAIL: twodyard@wa-cr.com

The statements and figures presented herein, while not guaranteed, are secured from sources we believe authoritative. Subject to prior sale, lease, withdrawal and price change without notice.

14090 Metropolis Avenue, Fort Myers, FL 33912



The statements and figures presented herein, while not guaranteed, are secured from sources we believe authoritative. Subject to prior sale, lease, withdrawal and price change without notice.