

Office & Retail Unit for Lease



LOCATION: 12951 Metro Parkway, Fort Myers, FL 33966

STRAP #: 18-45-25-06-00000.0030

ZONING: CPD - Community Planned Development

SIZE: Unit 2: 1,600± Sq. Ft.
Unit 10: 1,280± Sq. Ft. - Retail

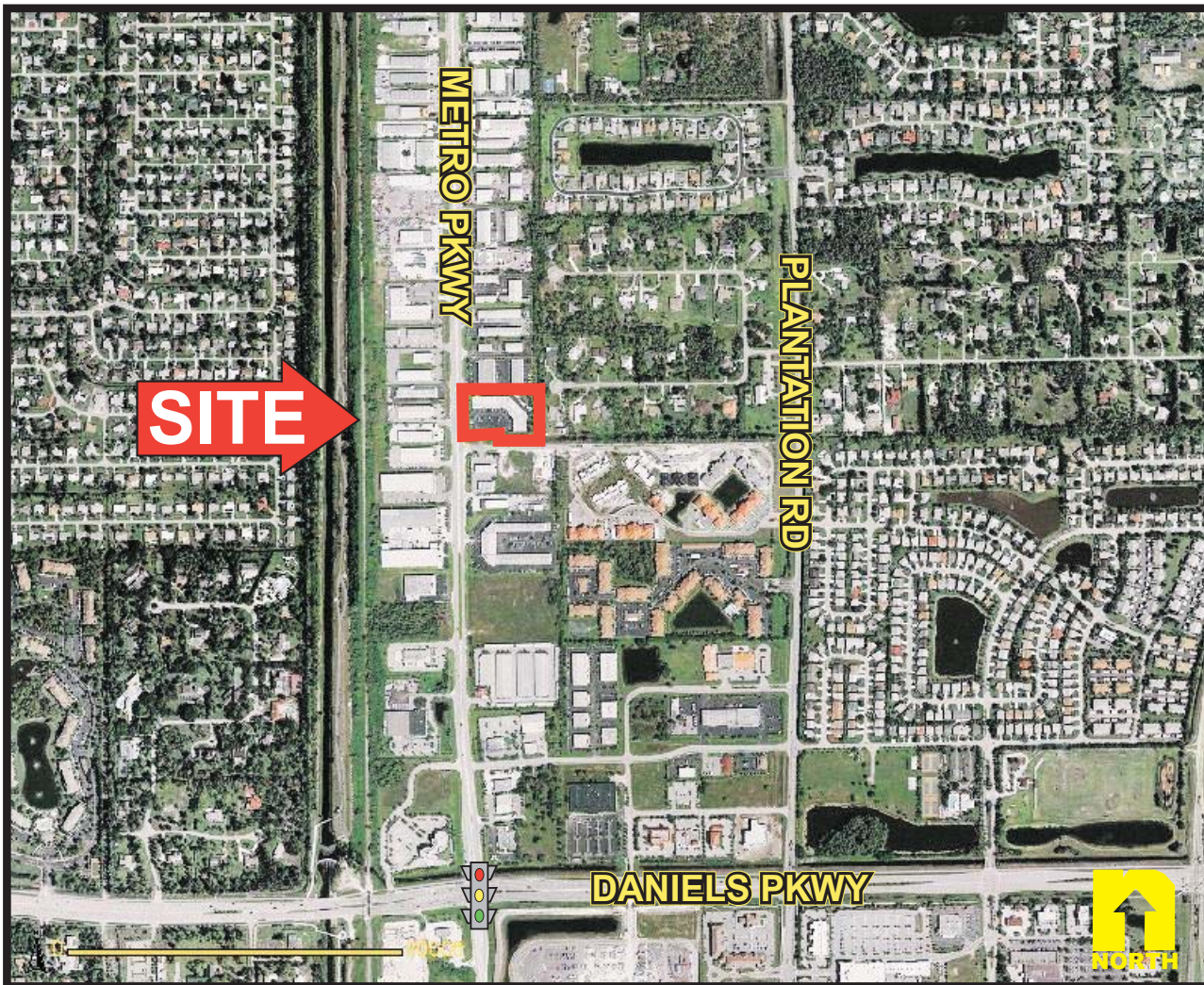
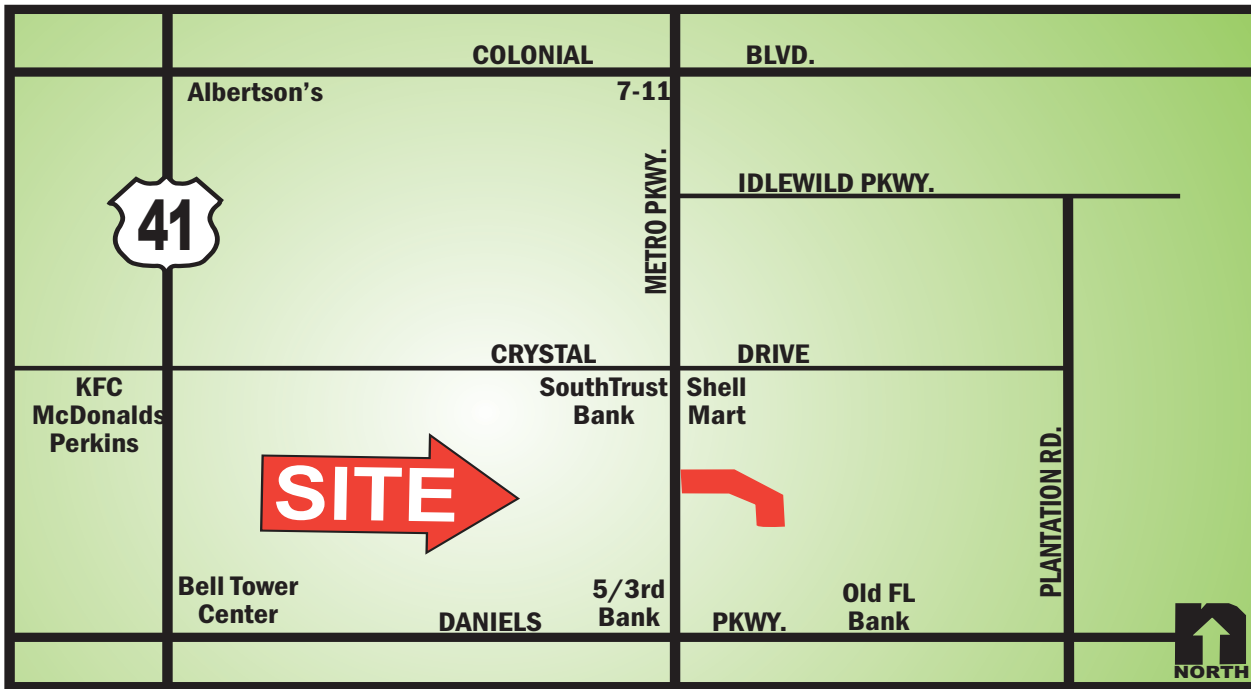
PRICE: \$14.00 per Sq. Ft. plus \$3.25 per Sq. Ft. CAM

COMMENTS: One retail space in vibrant retail area on Metro. Center has only 2 vacancies in the center!! Medical impact fees paid on the medical unit. Don't miss this great opportunity to receive maximum exposure with minimal rent! Highly motivated owner says he'll entertain all offers.

CONTACT: TOM WOODYARD
PHONE: (239) 425-6011
E-MAIL: twoodyard@wa-cr.com

The statements and figures presented herein, while not guaranteed, are secured from sources we believe authoritative. Subject to prior sale, lease, withdrawal and price change without notice.

12951 Metro Parkway, Fort Myers, FL 33966



The statements and figures presented herein, while not guaranteed, are secured from sources we believe authoritative. Subject to prior sale, lease, withdrawal and price change without notice.