

.46± Acre Commercial Site in NE Cape Coral



LOCATION: 2008 & 2012 NE 17th Terrace, Cape Coral, FL 33909

STRAP #: 32-43-24-C3-02215.0040 & .0060

ZONING: P1 - Professional (Commercial Professional Future Land Use)

UTILITIES: Water and Septic

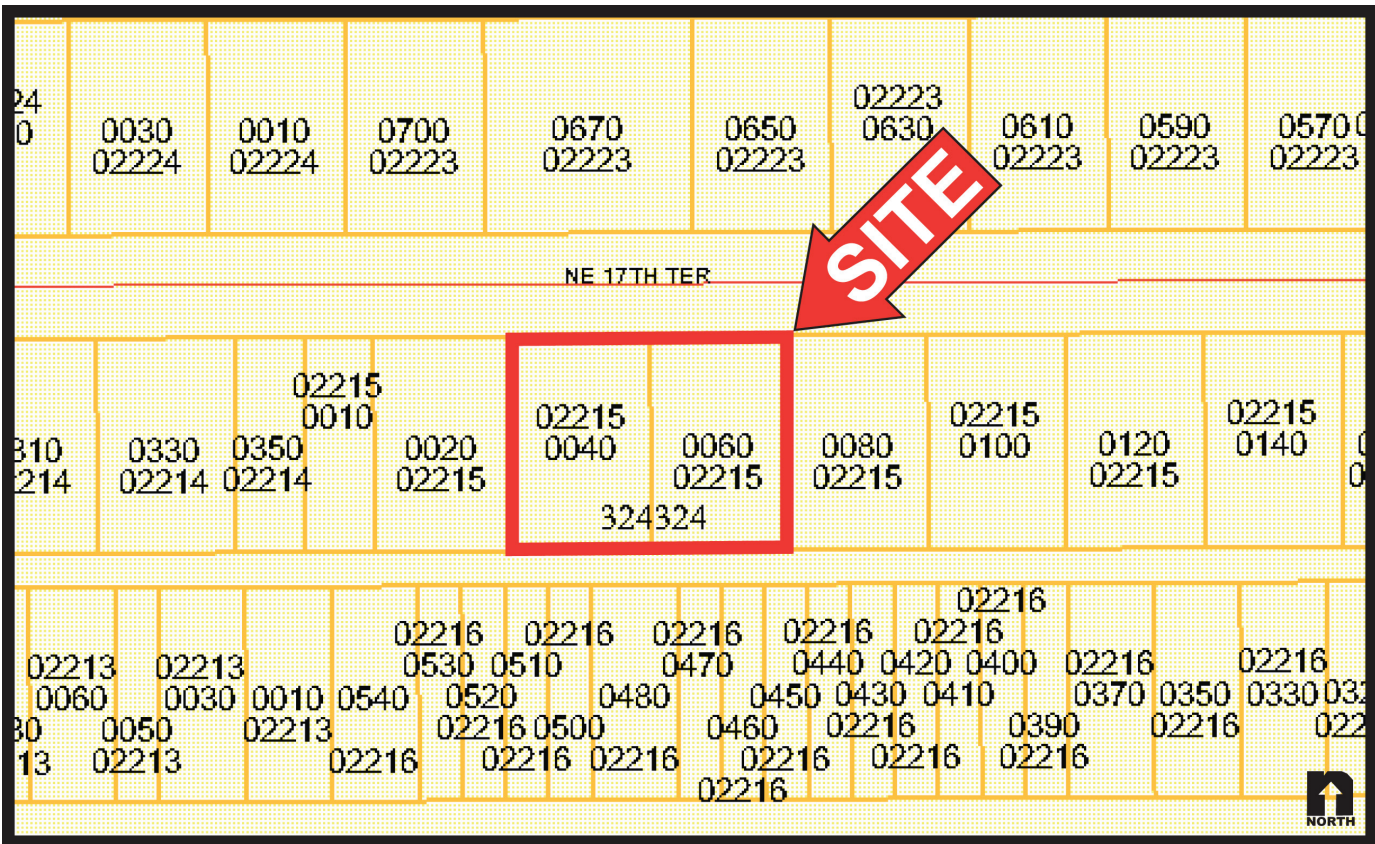
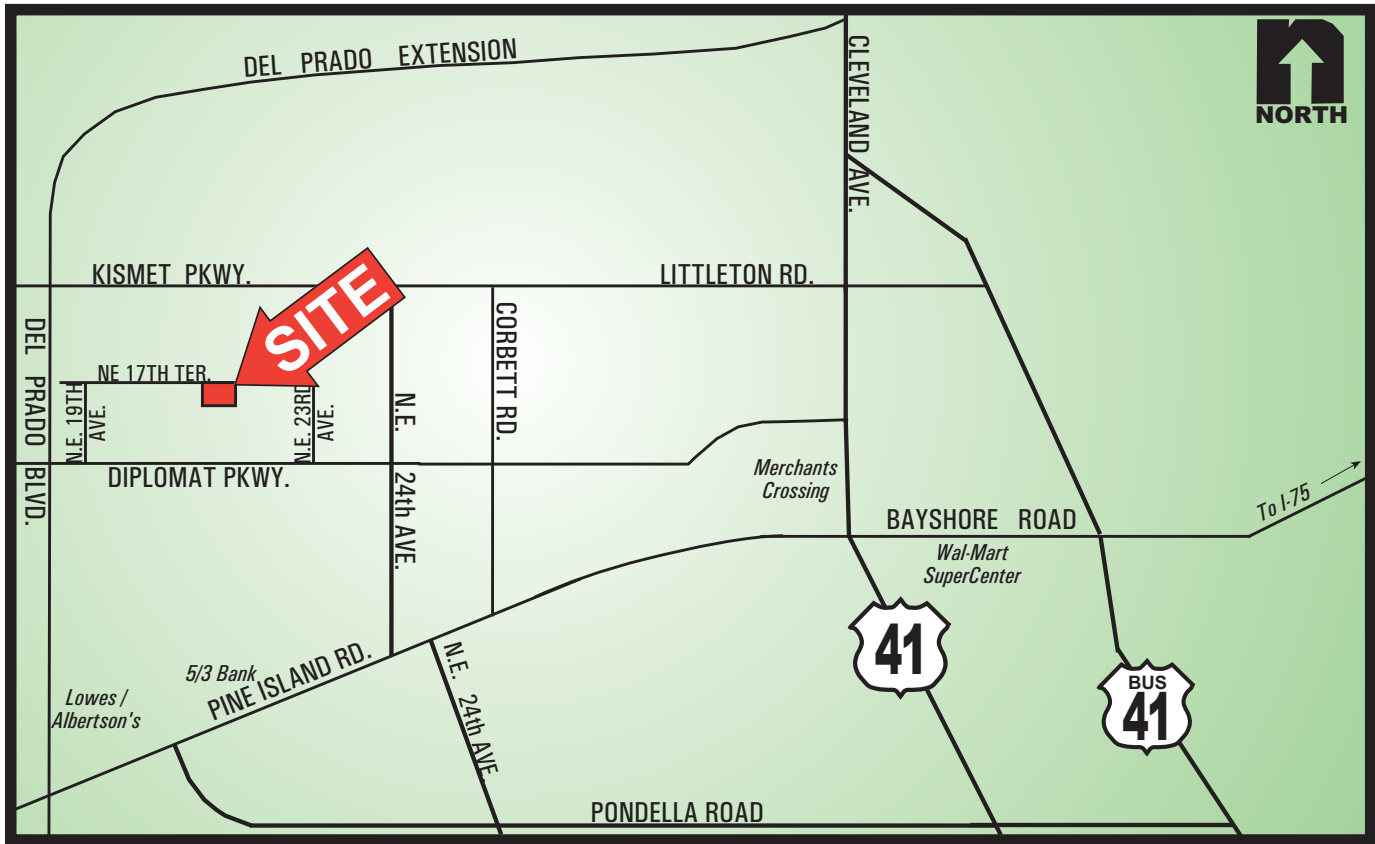
SIZE: .46± Acre or 20,000± Sq. Ft. Total

PRICE: \$295,000

COMMENTS: Commercial site located just off of Diplomat Pkwy. Excellent access from and to Del Prado Boulevard, Pine Island Road (State Road 78), Pondella Road and US 41.

CONTACT: TOM WOODYARD
PHONE: (239) 425-6011
E-MAIL: twodyard@wa-cr.com

2008 & 2012 NE 17th Terrace, Cape Coral, FL 33909



The statements and figures presented herein, while not guaranteed, are secured from sources we believe authoritative. Subject to prior sale, lease, withdrawal and price change without notice.