

# World Plaza II Office Condo For Lease



**LOCATION:** 12540 World Plaza Lane, Building 44, Fort Myers, FL 33907

**STRAP #:** 14-45-24-47-00000.0440

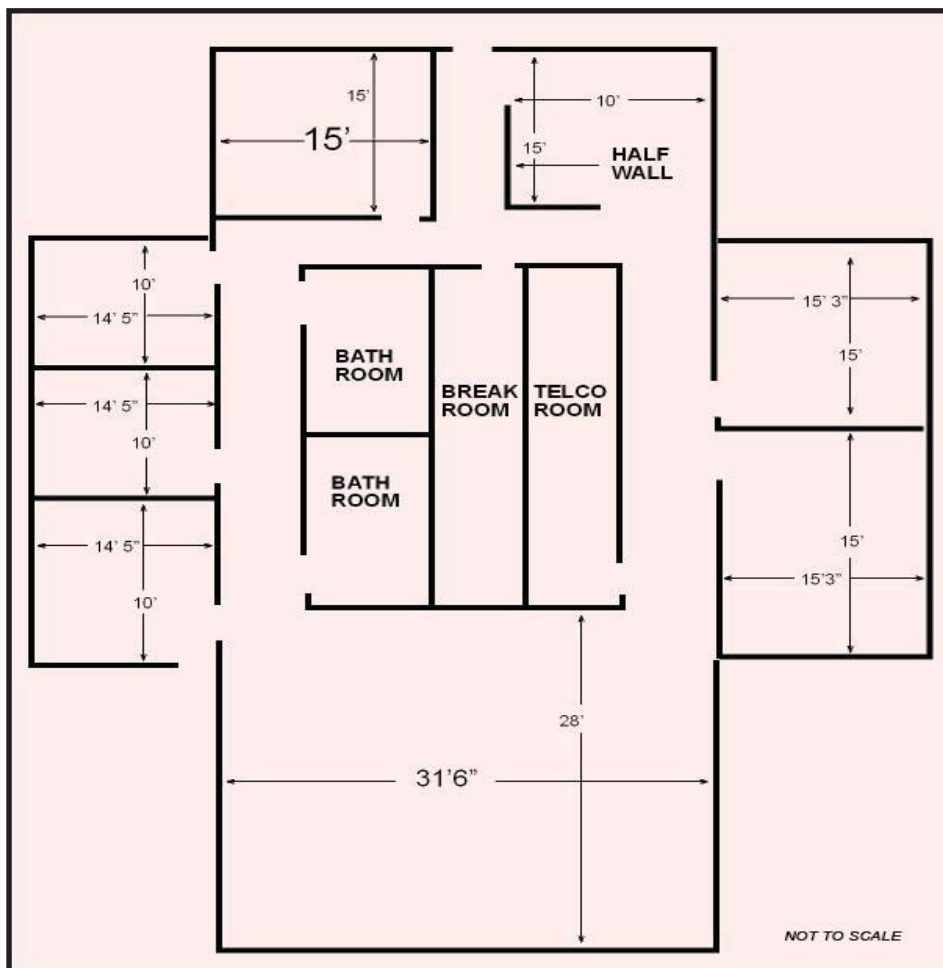
**ZONING:** CPD - Commercial Planned Development

**SIZE:** 3,014± Sq. Ft.

**PRICE:** \$3,014.00 Per Month Gross + Sales Tax

**COMMENTS:** Beautifully appointed office in the heart of Fort Myers. Conveniently located off of Brantley Drive. Ideal location for CPA, Attorney, or Mortgage Broker.

**CONTACT:** STEVE WOOD  
**PHONE:** (239) 425-6027  
**E-MAIL:** [swood@wa-cr.com](mailto:swood@wa-cr.com)



The statements and figures presented herein, while not guaranteed, are secured from sources we believe authoritative. Subject to prior sale, lease, withdrawal and price change without notice.