

# For Sale on Laurel Drive Great Commercial Neighborhood



**LOCATION:** 1545 & 1551 Laurel Drive, North Fort Myers, FL 33917

**STRAP #:** 26-43-24-00-00028.011A and .011C

**ZONING:** C-1A Commercial

**SIZE:** 27,300± SF

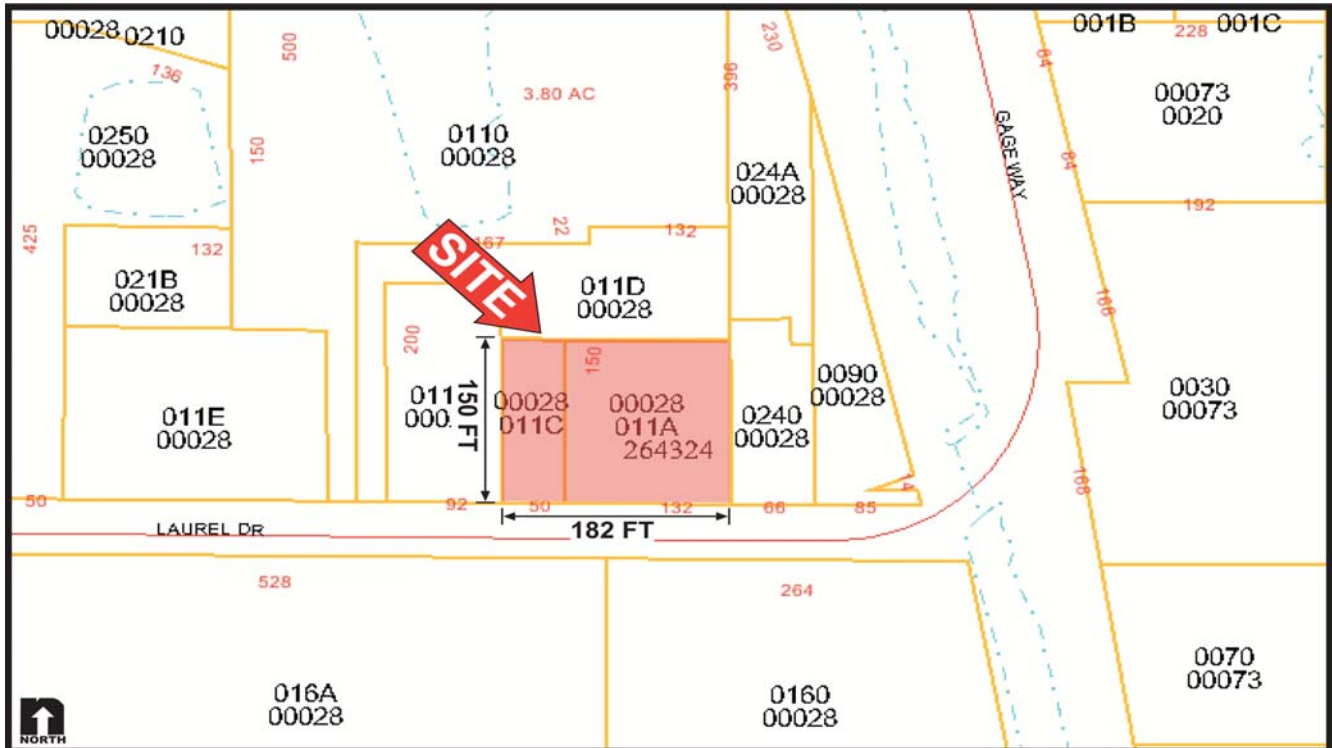
**PRICE:** \$160,700.00

**REAL ESTATE TAXES:** \$533.96 (both lots)

**COMMENTS:** Motivated seller. Great North Fort Myers Community Commercial location. Close to the Shell Factory. Site is directly next to a community grocery store.

**CONTACT:** TOM WOODYARD  
**PHONE:** (239) 425-6011  
**E-MAIL:** [twoodyard@wa-cr.com](mailto:twoodyard@wa-cr.com)

# 1545 & 1551 Laurel Drive, North Fort Myers, FL 33917



The statements and figures presented herein, while not guaranteed, are secured from sources we believe authoritative. Subject to prior sale, lease, withdrawal and price change without notice.