



LOCATION: 918 NE 24th Lane, Unit 6, Cape Coral, FL 33909

ZONING: I1 - Industrial

SIZE: 1,200± Sq. Ft

UTILITIES: City water and sewer

2006 TAXES: \$1,553.84

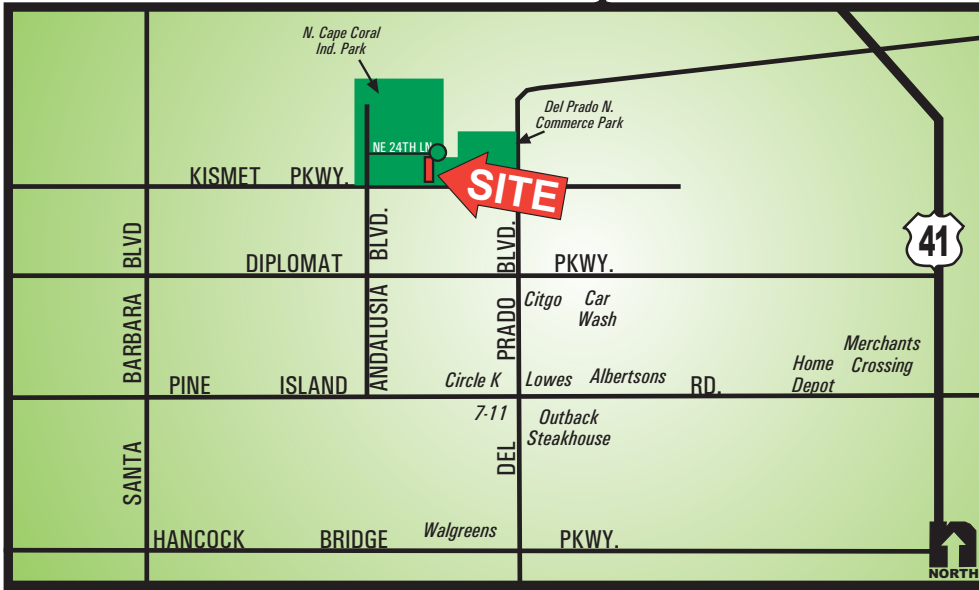
PRICE: \$180,000.00

COMMENTS: Includes one overhead door and store room. Condo association fees of \$300.00 are due every quarter. Located in the North Cape Coral Industrial Park just off of Kismet Parkway.

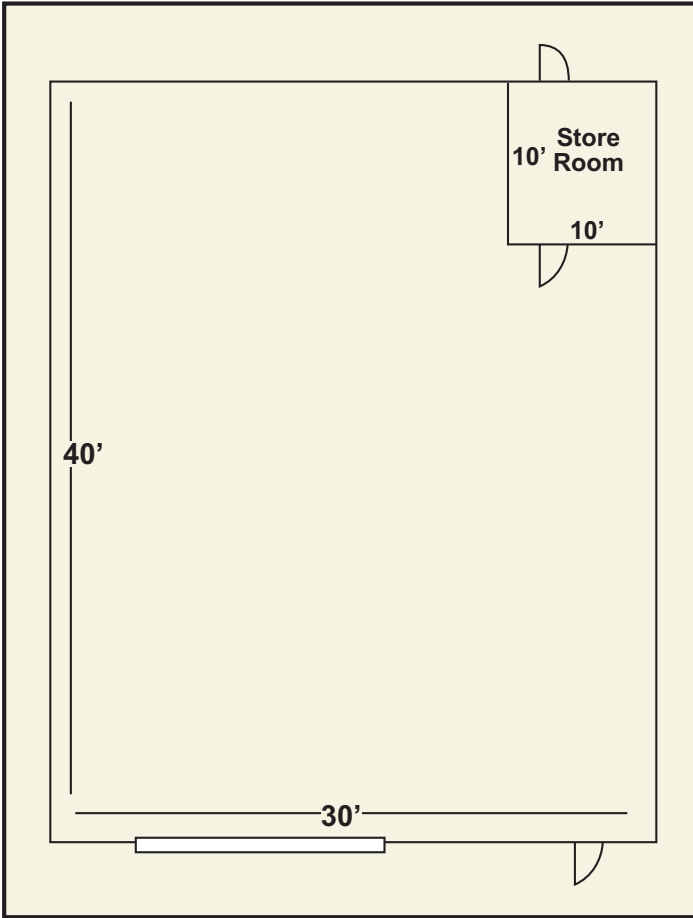
CONTACT: JOHN KREMSKI, CCIM
PHONE: (239) 425-6017
E-MAIL: john@johnkremski.com

CONTACT: TODD HOLMAN
PHONE: (239) 425-6014
E-MAIL: tholman@wa-cr.com

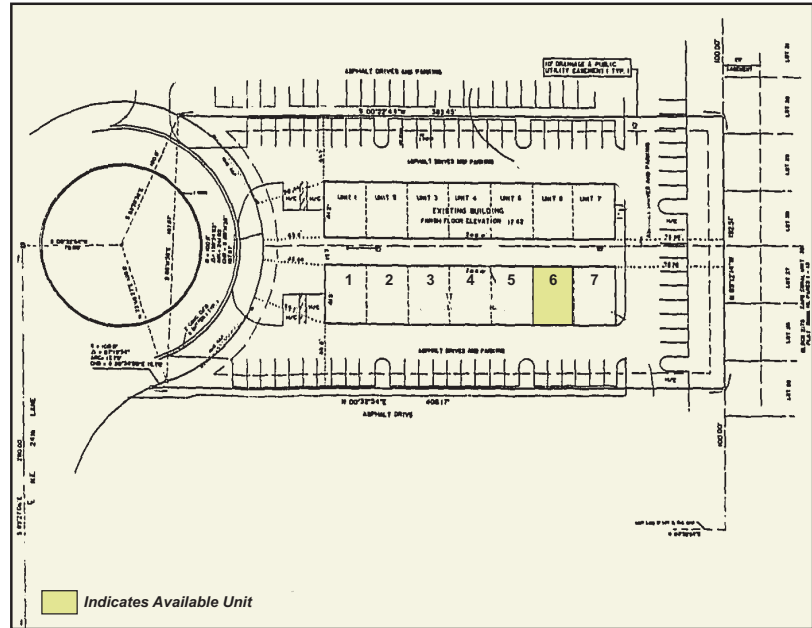
928 NE 24th Lane, Cape Coral, FL 33909



Floor Plan



Site Plan



The statements and figures presented herein, while not guaranteed, are secured from sources we believe authoritative. Subject to prior sale, lease, withdrawal and price change without notice.