

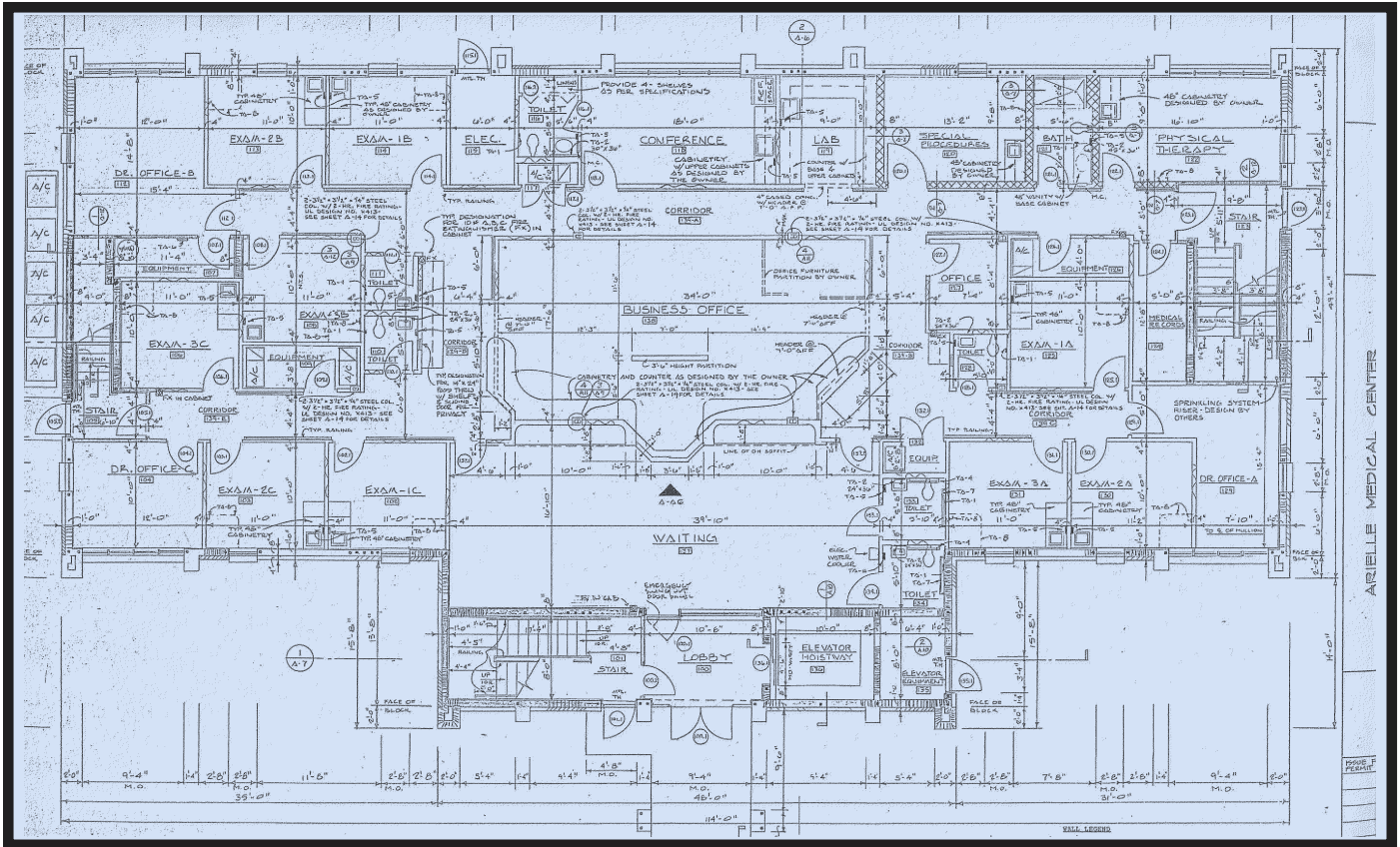
Arielle Medical Center

5,207± Sq. Ft. Office Condominium



- LOCATION:** 14171 Metropolis Avenue, Suite 101, Fort Myers, FL
Metro Parkway frontage, south of Gulf Coast Hospital
- ZONING:** Commercial - CPD
- BUILDING SIZE:** 5,207± Sq. Ft., built out as medical office space
- TERMS:** Seven years with 4% annual escalation
- PRICE:** \$16.00 Per Sq. Ft. NNN and \$3.75 Per Sq. Ft. CAM
- COMMENTS:** This office suite in the Arielle Medical Center, is built out as a medical office and is in 'like new' condition. The two-story building is nicely appointed and has an elevator, 54 parking spaces, and a convenient location to the Gulf Coast Hospital.
- CONTACT:** TODD HOLMAN
TOM WOODYARD
- PHONE:** (239) 454-5820
- E-MAIL:** todd@remaxcommercialteam.com
tom@remaxcommercialteam.com

The statements and figures presented herein, while not guaranteed, are secured from sources we believe authoritative. Subject to prior sale, lease, withdrawal and price change without notice.



CONTACT: TODD HOLMAN
 TOM WOODYARD

PHONE: (239) 454-5820

E-MAIL: todd@remaxcommercialteam.com
 tom@remaxcommercialteam.com