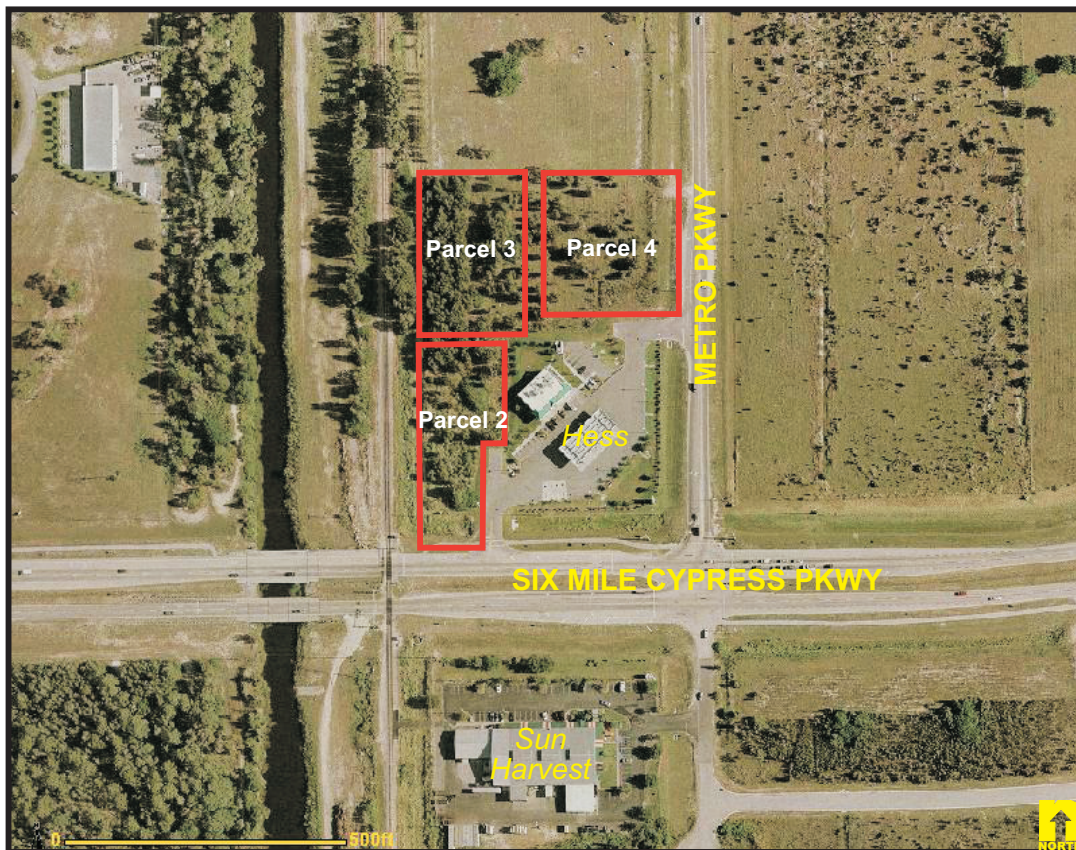


Six Mile Cypress Parkway & Metro Parkway



LOCATION: 14690 Metro Parkway, Fort Myers, FL 33912

ZONING: CPD - Commercial Planned Development

SIZE: 3.1± Acres

PRICE: \$1,805,900.00

COMMENTS: This parcel is available at this premier signalized intersection of Metro Parkway & Six Mile Cypress Parkway. This is an area of new hospital, commercial and professional development that includes a WalMart (200,000 SF), medical offices, Lowes (165,000 SF), Home Depot (180,000 SF), Bahama Breeze and Perkins Restaurant. The planned Metro Parkway Extension south to US 41 is one of Lee County's major road projects. This is becoming a major thoroughfare to I-75, International Airport, South Fort Myers, and the beaches.

CONTACT: HAL ARKIN
(239) 425-6015

E-MAIL: harkin@dw-cr.com

7051 Cypress Terrace
Suite 110, First Floor
Fort Myers, FL 33907
Phone: (239) 425-6000
Fax: (239) 425-6001
www.GDWFL.com

14690 Metro Parkway, Fort Myers, FL 33912

