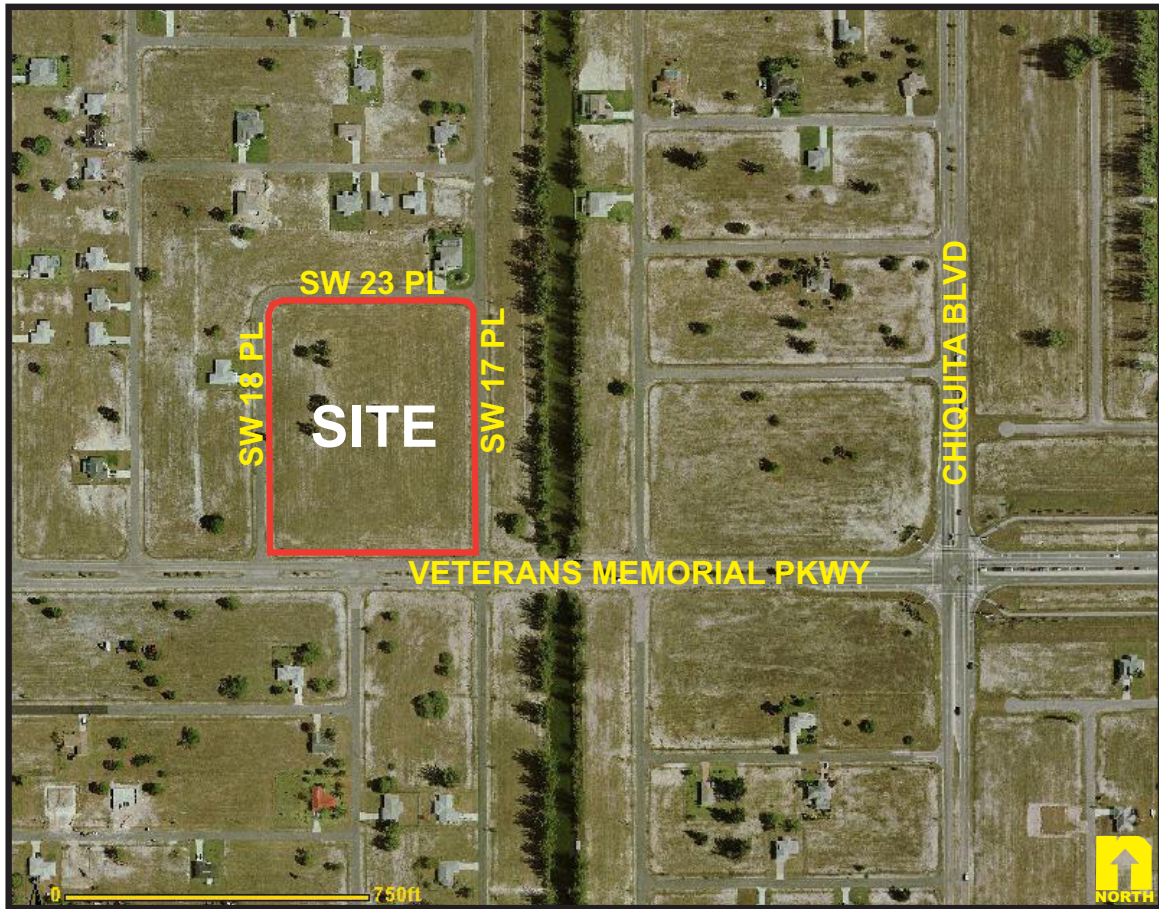


Veteran's Memorial Parkway 5.73 ± Acre Corner



LOCATION: 1738 SW 23rd Street, Cape Coral, FL 33991
Just west of Chiquita Boulevard on Veteran's Memorial Parkway & the corners of SW 23rd Street, SW 17th Place & SW 18th Place.

ZONING: Residential

SIZE: 5.73 ± Acres

PRICE: \$875,000.00 or \$3.50 Per Sq. Ft.

COMMENTS: One of the largest tracts available on Veteran's Memorial Parkway. Excellent opportunities for commercial, professional offices, multi-family, churches, etc.

CONTACT: HAL ARKIN
PHONE: (239) 425-6015
E-MAIL: harkin@dw-cr.com

7800 University Pointe Drive
Suite 100, Second Floor
Fort Myers, FL 33907
Phone: (239) 425-6000
Fax: (239) 425-6001
www.DW-CR.com

1738 SW 23rd Street, Cape Coral, FL 33991

