

Date: 11/22/05

Current Geography Selection: (3 Selected) 1, 3, 5 mile radii: 4809 SW 18TH AVE, CAPE CORAL, FL 33914

Current Index Base: Entire US

Lat: 26.561990 Long: -82.010847

City: Cape Coral city Pop: 135,032

County: Lee County Pop: 523,512

Zip: 33914 Pop: 36,866

2000 US Census Overview Comparison Report

	1 Miles:	3 Miles:	5 Miles:
Basic Variables			
Population	5,768	29,101	70,570
Female Population	2,932	14,889	36,603
Female Percentage	50.8%	51.2%	51.9%
Male Population	2,836	14,212	33,967
Male Percentage	49.2%	48.8%	48.1%
Households	2,303	11,632	29,915
Age: Total			
Age 0 to 4	5.3%	5.4%	4.8%
Age 5 to 9	6.3%	6.5%	5.8%
Age 10 to 13	5.4%	5.6%	4.9%
Age 14 to 17	4.7%	5.1%	4.5%
Age 18 to 20	2.5%	2.8%	2.5%
Age 21 to 24	2.5%	2.8%	2.6%
Age 25 to 29	4.7%	4.8%	4.4%
Age 30 to 34	6.0%	6.2%	5.7%
Age 35 to 39	7.2%	7.6%	7.3%
Age 40 to 44	8.4%	8.2%	7.5%
Age 45 to 49	8.1%	7.7%	6.8%
Age 50 to 54	8.6%	7.5%	7.0%
Age 55 to 59	8.0%	6.6%	6.4%
Age 60 to 64	6.5%	5.7%	6.0%
Age 65 to 69	5.8%	5.1%	5.9%
Age 70 to 74	4.3%	5.1%	6.4%
Age 75 to 79	3.3%	3.7%	5.3%
Age 80 to 84	1.5%	2.2%	3.6%
Age 85 Plus	0.9%	1.4%	2.8%
Median Age	43.2	41.9	45.1
Educational Attainment			
No schooling completed	0.1%	0.3%	0.5%
School: PreK to 8	2.3%	1.9%	2.4%
School: 9th to 11th grade, no diploma	7.5%	10.7%	10.3%
School: High school graduate	31.9%	34.1%	34.0%
College: Associate degree	8.0%	7.2%	7.0%
College: Some college, no degree	26.9%	25.6%	25.2%
College: Bachelor's degree	16.0%	13.5%	13.4%
College: Graduate degree	7.3%	6.8%	7.2%
Race & Ethnicity			
American Indian and Alaska Native Alone	0.1%	0.2%	0.2%
Asian Alone	0.5%	0.6%	0.8%
Black Alone	1.1%	1.4%	1.5%

Native Hawaiian and Other Pacific Islander Alone	0.0%	0.0%	0.0%
Some Other Race Alone	1.5%	2.0%	1.8%
Two or More Races	1.4%	1.5%	1.4%
White Alone	95.5%	94.3%	94.3%
Hispanic or Latino	6.5%	7.6%	7.1%
Not Hispanic or Latino	93.5%	92.4%	92.9%

Income by Type: Household Income

Less than \$10,000	5.4%	5.2%	6.0%
\$10,000 to \$14,999	3.7%	3.9%	5.1%
\$15,000 to \$19,999	3.9%	4.7%	5.7%
\$20,000 to \$24,999	3.2%	4.7%	6.3%
\$25,000 to \$29,999	7.0%	6.8%	7.3%
\$30,000 to \$34,999	5.6%	8.3%	7.7%
\$35,000 to \$39,999	6.9%	6.7%	6.9%
\$40,000 to \$44,999	6.6%	7.2%	7.5%
\$45,000 to \$49,999	5.4%	5.6%	5.5%
\$50,000 to \$59,999	9.5%	11.1%	10.4%
\$60,000 to \$74,999	11.6%	14.1%	12.2%
\$75,000 to \$99,999	14.0%	10.6%	9.2%
\$100,000 to \$124,999	5.5%	4.4%	3.8%
\$125,000 to \$149,999	3.0%	2.3%	2.0%
\$150,000 to \$199,999	5.0%	2.5%	2.0%
\$200,000 or more	3.7%	2.0%	2.4%
Median Household Income	\$52,198	\$47,151	\$43,257
Per Capita Income	\$26,711	\$22,997	\$23,529
Average Household Income	\$66,901	\$57,533	\$55,505

Size of Household

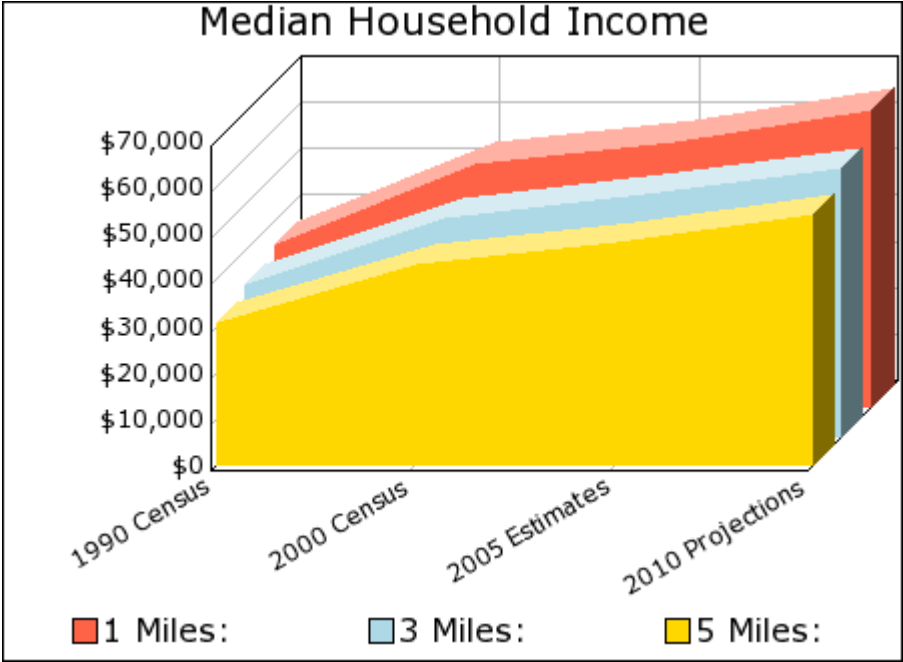
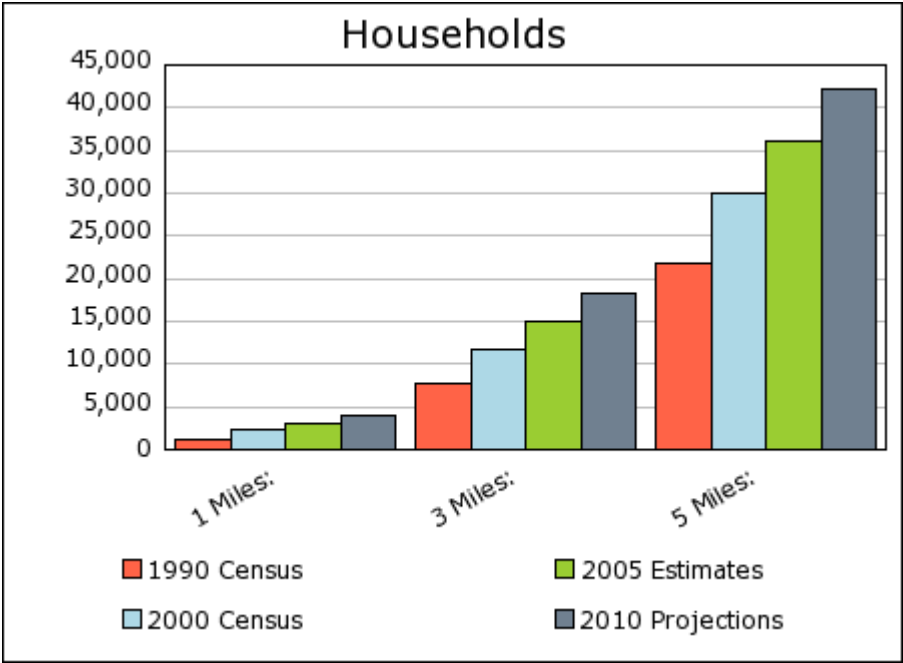
1 Person Households	15.8%	18.3%	23.3%
2 Person Households	46.2%	43.9%	45.1%
3 Person Households	18.3%	17.0%	14.5%
4 Person Households	13.4%	14.0%	11.1%
5 Person Households	4.6%	5.1%	4.2%
6 Person Households	1.4%	1.5%	1.4%
7 + Person Households	0.3%	0.3%	0.4%

Housing Value & Rental Costs

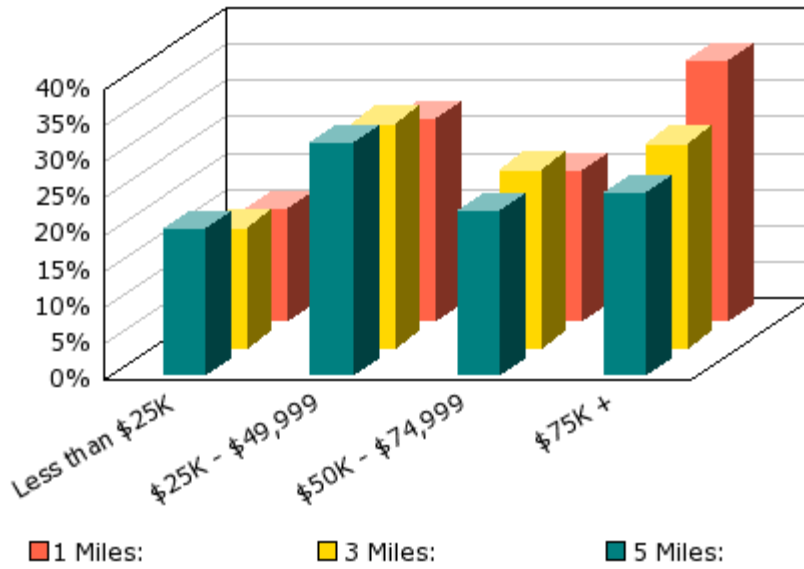
Median Owner-Occupied Housing Value	\$160,683	\$122,602	\$116,486
Average Monthly Contract Rent	\$688	\$690	\$690

Housing Units - Year Moved In

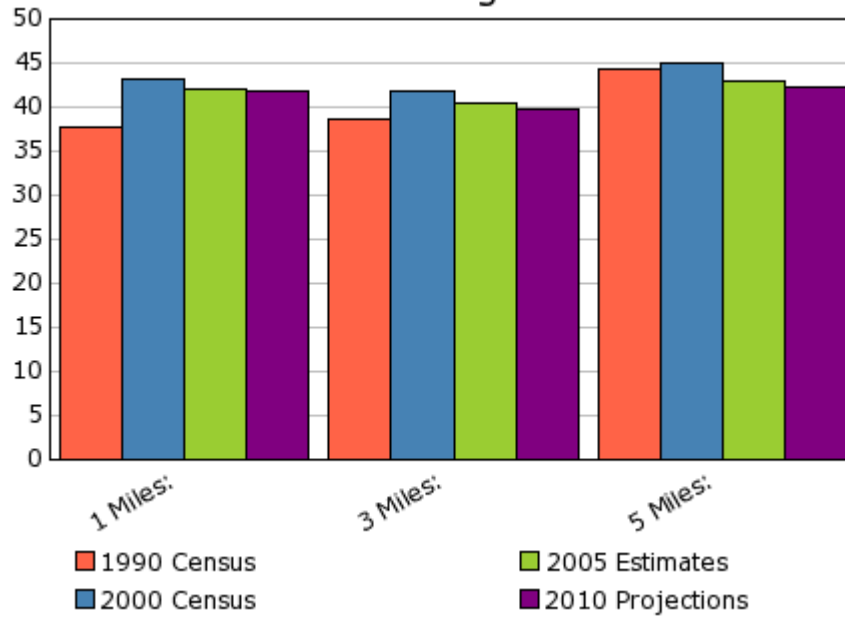
1969 or earlier	0.0%	0.8%	1.2%
1970 to 1979	1.5%	4.2%	5.8%
1980 to 1989	16.0%	18.9%	19.5%
1990 to 1994	19.7%	17.8%	17.9%
1995 to 1998	36.8%	35.3%	33.9%
1999 to 2000	26.0%	22.9%	21.8%
Housing Stability (5 Year)	30.6%	36.0%	37.6%
Housing Turnover (1 Year)	26.6%	23.4%	22.3%

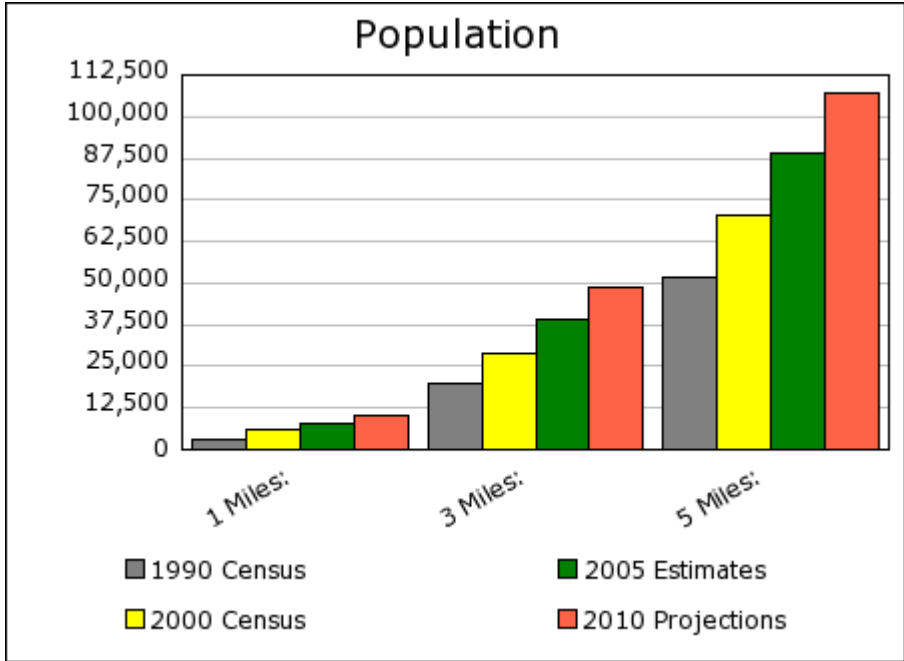
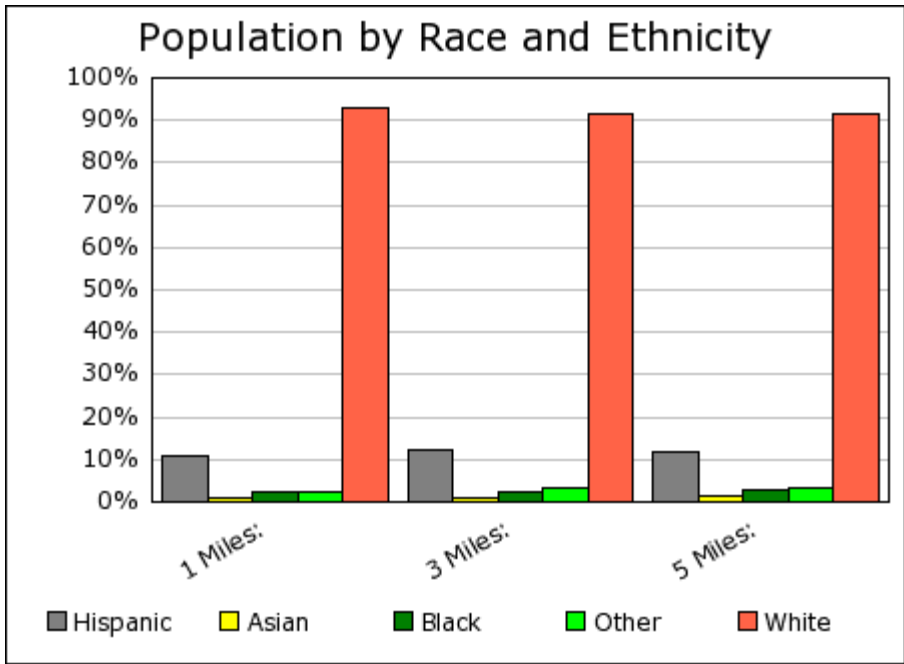


Percent of Households by Income



Median Age





Demographic Snapshot Comparison Report

	1 Miles:	3 Miles:	5 Miles:
Population:			
Total Population	8,075	39,318	89,186
Male Population	49.6%	49.3%	48.7%
Female Population	50.4%	50.7%	51.3%
Median Age	42.1	40.4	43.0
Population Density (per sq. mi.)	2,570.5	1,390.6	1,135.6
Employees	810	3,560	16,085
Establishments	175	756	2,823
Income:			
Median HH Income	\$56,892	\$52,269	\$48,114

Per Capita Income	\$29,153	\$24,399	\$25,020
Average HH Income	\$75,085	\$63,608	\$61,301

Households:

Total Households	3,126	15,096	36,121
Average Household Size	2.58	2.60	2.46
Household Growth 1990 - 2000	90.0%	50.9%	36.7%

Housing:

Owner Occupied Housing Units	64.2%	66.6%	63.4%
Renter Occupied Housing Units	17.5%	18.1%	19.6%
Vacant Housing Units	18.2%	15.3%	17.1%

Race:

White	92.8%	91.5%	91.4%
Black	2.3%	2.5%	2.6%
American Indian, Eskimo, Aleut	0.8%	1.2%	1.2%
Asian	0.8%	1.0%	1.2%
Hawaiian or Pacific Islander	0.0%	0.0%	0.0%
Other	1.6%	2.1%	2.0%
Multirace	1.6%	1.7%	1.6%

Ethnicity:

Hispanic	10.6%	12.1%	11.6%
Non-Hispanic	89.4%	87.9%	88.4%

Current year data is for the year **2005**, 5 year projected data is for the year **2010**.

Demographic data © 2005 by Experian/Applied Geographic Solutions.

Crime data © 2005 by Experian/Applied Geographic Solutions.

The retail centers data used in this site is licensed by National Research Bureau (NRB).

Traffic Count data © 2005 by GDT.

Properties data © 2005 by Property & Portfolio Research (PPR) Inc. and Dodge Pipeline All rights reserved.

The information presented herein, while not guaranteed, was obtained from sources we believe to be reliable.
Neither STDB, Inc. nor the CCIM Institute assumes any liability for errors or omissions.



This site is brought to you by **STDB, Inc.** Powered by **SRC, LLC**.
© 2005 All Rights Reserved.