

# Whitehall Professional Building For Lease



**LOCATION:** 12590 Whitehall Drive, Unit 2, Fort Myers, FL 33907

**STRAP #:** 14-45-24-00-00005.0220

**ZONING:** CS-1

**SIZE:** 1,700± Sq. Ft.

**PRICE:** \$16.00 Per Sq. Ft. NNN + Buildout Allowance up to \$10.00 Per Sq. Ft.

**COMMENTS:** Located in Fort Myers's premier medical area, Summerlin Rd & College Pkwy Corridors. Amid several medical office parks, the property offers easy access to Lee Health Park, Lee Memorial Hospital, US 41, and College Parkway.

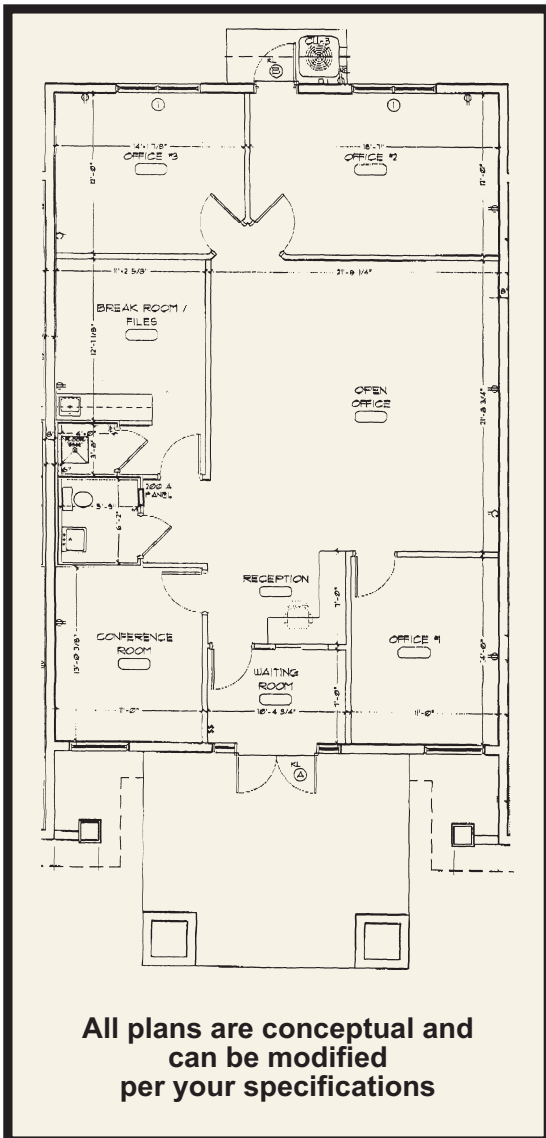
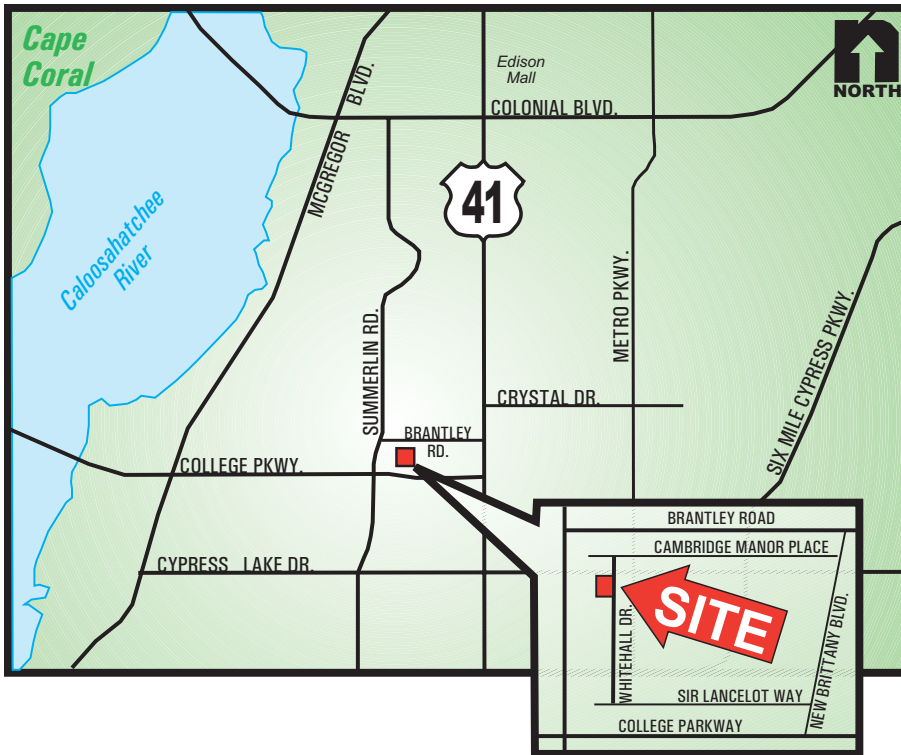
**CONTACT:** TIM COLEN  
**PHONE:** (239) 425-6021  
**E-MAIL:** tcolen@dw-cr.com

**CONTACT:** TOM WOODYARD  
**PHONE:** (239) 425-6000  
**E-MAIL:** twodyard@dw-cr.com

7800 University Pointe Drive  
Suite 100, Second Floor  
Fort Myers, FL 33907  
Phone: (239) 425-6000  
Fax: (239) 425-6001  
[www.DW-CR.com](http://www.DW-CR.com)

000287 / 8-15-05

# 12590 Whitehall Drive, Fort Myers, FL 33907



All plans are conceptual and  
can be modified  
per your specifications