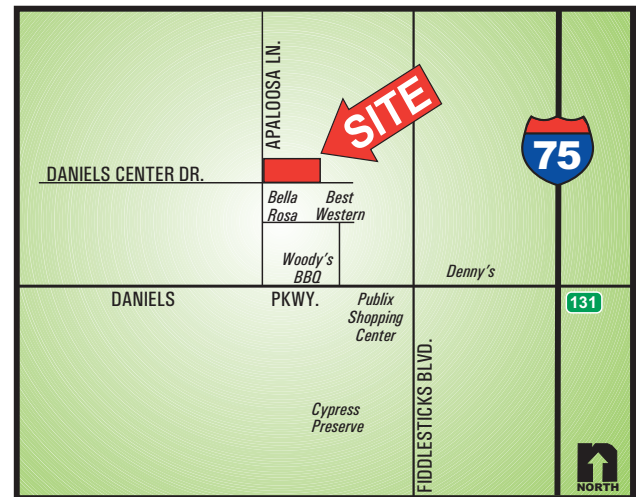




**LOCATION:** 8981 Daniels Center Drive, Fort Myers, FL

**ZONING:** CPD - Commercial Planned Development

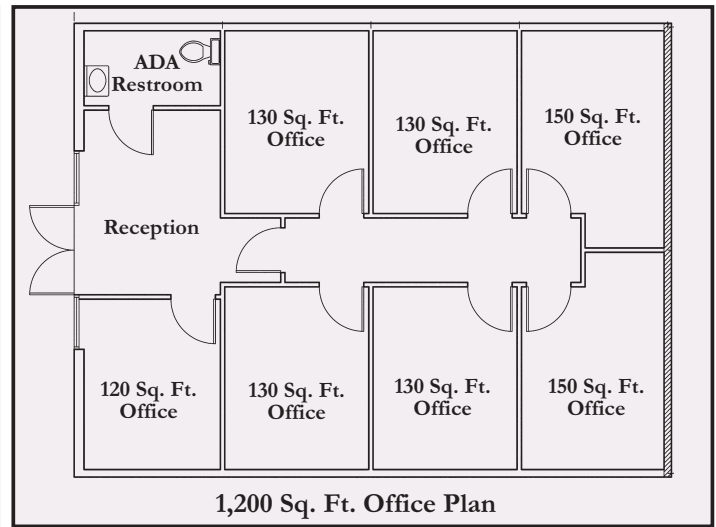
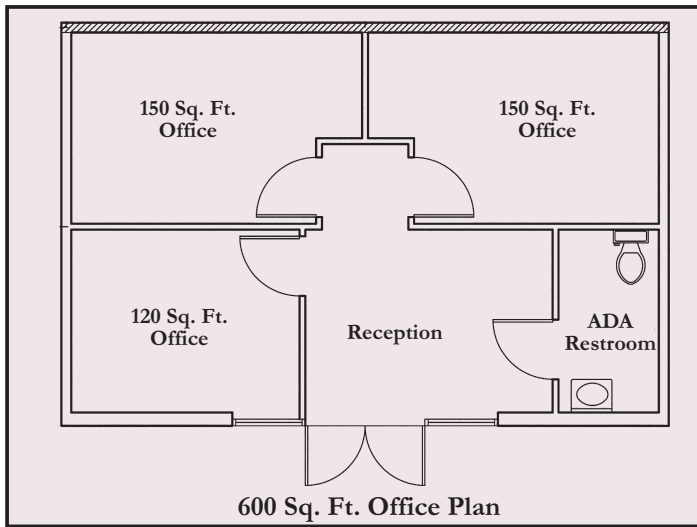


**COMMENTS:** Own your own office for less than \$100,000! Newly built single story, stucco finish, garden office located in the heart of growth in Lee County. Just off Daniels Parkway, the newly constructed Daniels Center has ample parking and easy access to I-75. Phase I is completely full. Phase II is filling up fast, to be completed December 2004.

**CONTACT:** TODD HOLMAN  
**PHONE:** (239) 425-6014  
**E-MAIL:** tholman@dw-cr.com

7800 University Pointe Drive  
 Suite 100, Second Floor  
 Fort Myers, FL 33907  
 Phone: (239) 425-6000  
 Fax: (239) 425-6001  
[www.DW-CR.com](http://www.DW-CR.com)

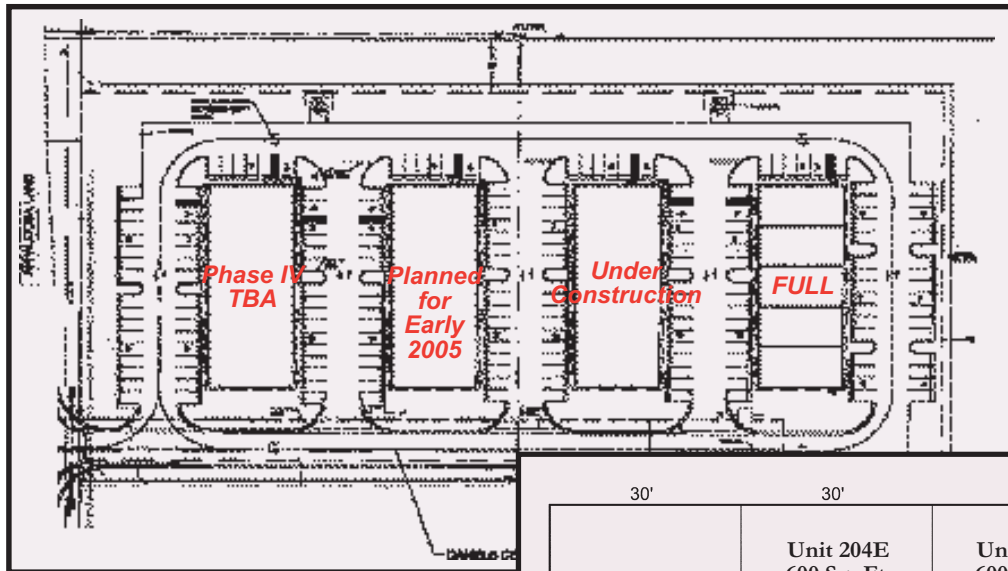
# 8981 Daniels Center Drive, Fort Myers, FL



*Move right in to a finished office space or Design your own with the improved shell*

SIZE	IMPROVED SHELL PRICE	FINISHED OFFICE PRICE
600 Sq. Ft.	\$ 93,000.00	\$ 99,000.00
900 Sq. Ft.	\$139,500.00	\$148,500.00
1,200 Sq. Ft.	\$186,000.00	\$198,000.00

*All prices include an ADA restroom  
Common Area Maintenance charge of \$3.85 Per Sq. Ft.*



	30'	30'	30'	30'	30'
	Unit 205E 900 Sq. Ft. (30' x 30')	Unit 204E 600 Sq. Ft. (30' x 20')	Unit 203E 600 Sq. Ft. (30' x 20')	Unit 202E 600 Sq. Ft. (30' x 20')	Unit 201E 900 Sq. Ft. (30' x 30')
60'	Unit 205W 900 Sq. Ft. (30' x 30')	Unit 204W 1,200 Sq. Ft. (30' x 40')	Unit 203W 1,200 Sq. Ft. (30' x 40')	Unit 202W 1,200 Sq. Ft. (30' x 40')	Unit 201W 900 Sq. Ft. (30' x 30')

*Adjoining offices can be combined to create the right size for your business needs.*