

**2,586 SF Office – Corner Lot**

1400 Kimdale St

1, 3, 5 mile radii : 1400 KIMDALE ST E, LEHIGH ACRES, FL 33936

Prepared By:

Thomas Woodyard

The information contained herein is from sources believed reliable, but neither the CCIM Institute nor its members, including the author of this report, have confirmed this information. Any warranty or representation of accuracy is expressly disclaimed. The Recipient of this report is cautioned that it is the Recipient's responsibility to confirm the accuracy and completeness of the information provided, including such independent investigation of this information as may appear necessary to determine its suitability for Recipient's needs.

**Date:** November 9, 2004**Current Geography Selection:** 1, 3, 5 mile radii: 1400 KIMDALE ST E,  
LEHIGH ACRES, FL 33936**Latitude:** 26.610824 **Longitude:** -81.655042**City:** Lehigh Acres CDP **Pop:** 38,111**County:** Lee County **Pop:** 491,083**Zip:** 33936 Lehigh Acres **Pop:** 17,219

## 2000 US Census Overview Comparison Report

	1 Miles:	3 Miles:	5 Miles:
<b>Basic Variables</b>			
Population	4,470	20,058	31,786
Female Population	2,489	10,524	16,431
Female Percentage	55.7%	52.5%	51.7%
Male Population	1,981	9,534	15,356
Male Percentage	44.3%	47.5%	48.3%
Households	1,996	7,804	12,212
<b>Age: Total</b>			
Age 0 to 4	5.5%	6.7%	6.6%
Age 5 to 9	5.7%	7.2%	7.3%
Age 10 to 13	4.4%	6.1%	6.2%
Age 14 to 17	3.8%	5.3%	5.4%
Age 18 to 20	2.5%	3.0%	3.0%
Age 21 to 24	3.2%	3.7%	3.7%
Age 25 to 29	5.0%	5.4%	5.4%
Age 30 to 34	5.4%	6.5%	6.5%
Age 35 to 39	6.3%	7.2%	7.5%
Age 40 to 44	5.9%	6.7%	7.1%
Age 45 to 49	4.8%	5.5%	5.8%
Age 50 to 54	5.4%	5.3%	5.7%
Age 55 to 59	4.4%	4.4%	4.7%
Age 60 to 64	5.4%	4.5%	4.7%
Age 65 to 69	6.6%	5.3%	5.1%
Age 70 to 74	6.8%	5.5%	5.1%
Age 75 to 79	7.9%	5.3%	4.7%
Age 80 to 84	5.5%	3.6%	3.1%
Age 85 Plus	5.5%	3.0%	2.3%
Median Age	47.3	39.2	38.9
<b>Educational Attainment</b>			
No schooling completed	1.1%	1.3%	1.1%
School: PreK to 8	8.9%	6.7%	5.5%
School: 9th to 11th grade, no diploma	17.9%	17.6%	16.5%
School: High school graduate	40.5%	39.1%	38.4%
College: Associate degree	4.5%	4.9%	5.5%
College: Some college, no degree	19.6%	20.4%	21.3%
College: Bachelor's degree	4.8%	6.1%	7.1%
College: Graduate degree	2.7%	3.8%	4.4%
<b>Race &amp; Ethnicity</b>			
American Indian and Alaska Native Alone	0.1%	0.3%	0.3%
Asian Alone	1.3%	1.0%	0.8%

Black Alone	6.7%	8.6%	8.6%
Native Hawaiian and Other Pacific Islander Alone	0.1%	0.0%	0.0%
Some Other Race Alone	3.8%	4.1%	3.7%
Two or More Races	2.1%	2.1%	1.9%
White Alone	85.9%	84.0%	84.7%
Hispanic or Latino	14.8%	14.9%	13.2%
Not Hispanic or Latino	85.2%	85.1%	86.9%

### Income by Type: Household Income

Less than \$10,000	15.1%	7.8%	6.4%
\$10,000 to \$14,999	10.8%	7.3%	6.5%
\$15,000 to \$19,999	10.2%	7.5%	6.8%
\$20,000 to \$24,999	10.3%	10.1%	8.8%
\$25,000 to \$29,999	10.3%	9.7%	8.5%
\$30,000 to \$34,999	5.2%	8.6%	8.1%
\$35,000 to \$39,999	6.2%	8.0%	8.0%
\$40,000 to \$44,999	7.1%	7.8%	7.6%
\$45,000 to \$49,999	6.8%	6.2%	6.8%
\$50,000 to \$59,999	5.0%	8.9%	11.1%
\$60,000 to \$74,999	5.3%	8.9%	10.4%
\$75,000 to \$99,999	4.4%	5.4%	6.6%
\$100,000 to \$124,999	1.6%	2.0%	2.5%
\$125,000 to \$149,999	0.9%	0.7%	0.8%
\$150,000 to \$199,999	0.4%	0.6%	0.6%
\$200,000 or more	0.3%	0.6%	0.7%
Median Household Income	\$26,653	\$34,454	\$38,121
Per Capita Income	\$15,124	\$15,940	\$17,002
Average Household Income	\$33,869	\$40,969	\$44,255

### Size of Household

1 Person Households	40.5%	25.9%	22.7%
2 Person Households	34.6%	35.4%	37.3%
3 Person Households	9.3%	14.8%	16.2%
4 Person Households	8.8%	13.4%	13.6%
5 Person Households	3.4%	6.6%	6.4%
6 Person Households	1.1%	2.3%	2.5%
7 + Person Households	0.9%	1.6%	1.4%

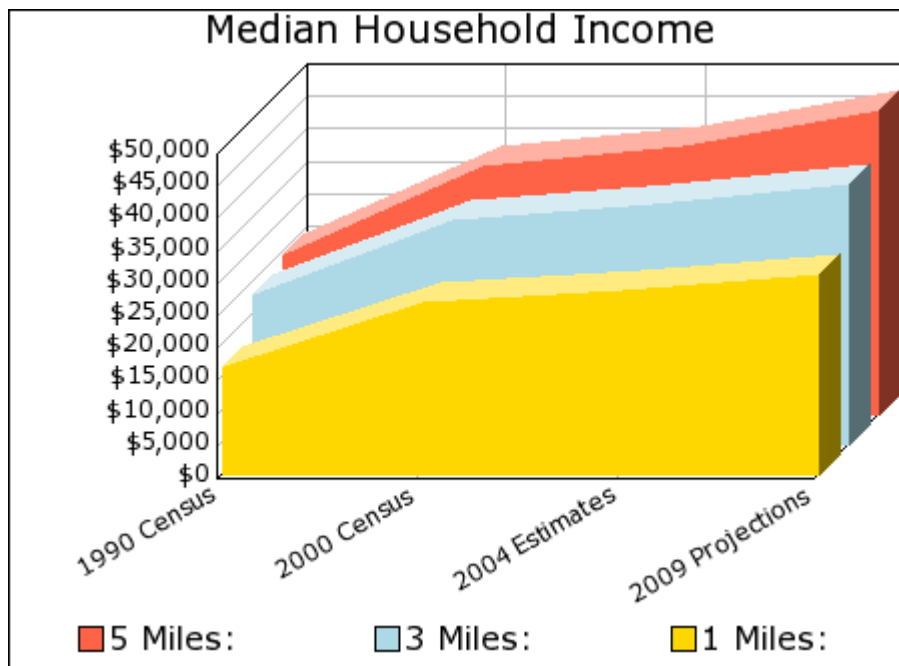
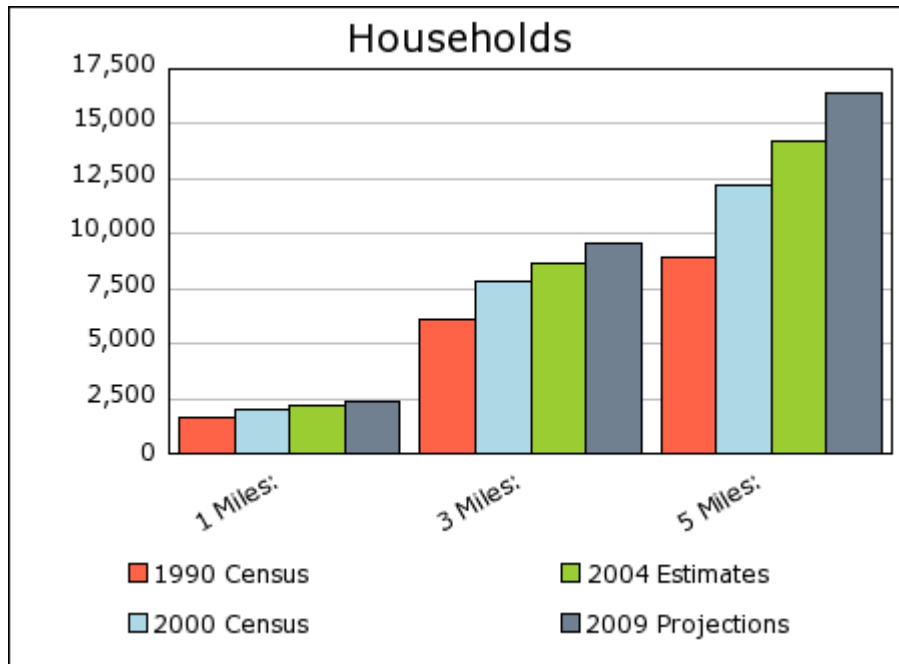
### Housing Value & Rental Costs

Median Owner-Occupied Housing Value	\$68,177	\$70,966	\$78,462
Average Monthly Contract Rent	\$400	\$468	\$503

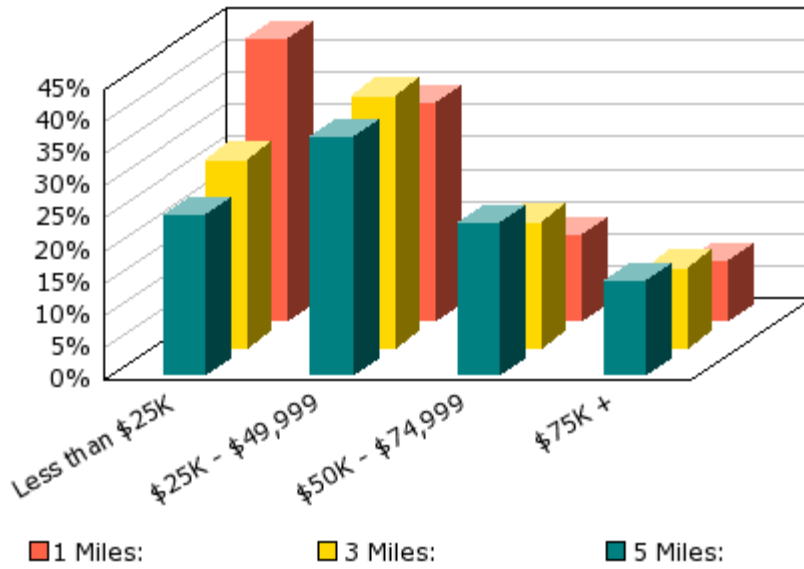
### Housing Units - Year Moved In

1969 or earlier	2.2%	2.4%	1.7%
1970 to 1979	7.9%	7.7%	6.7%
1980 to 1989	16.3%	17.5%	18.1%
1990 to 1994	21.6%	22.6%	22.6%
1995 to 1998	33.0%	31.7%	32.0%
1999 to 2000	19.0%	18.1%	18.9%
Housing Stability (5 Year)	36.4%	41.7%	42.1%
Housing Turnover (1 Year)	18.9%	18.4%	19.6%

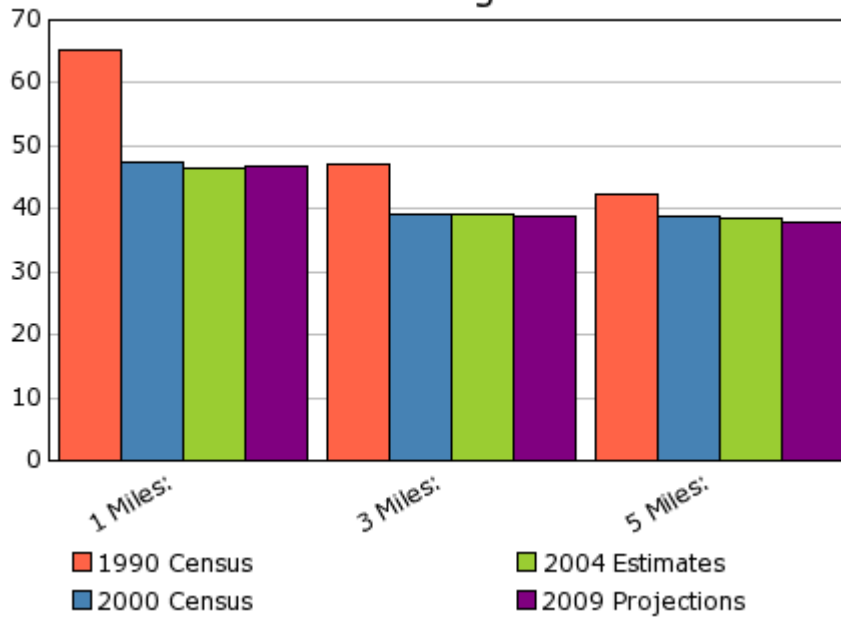
# Demographic Snapshot Comparison Report with Charts

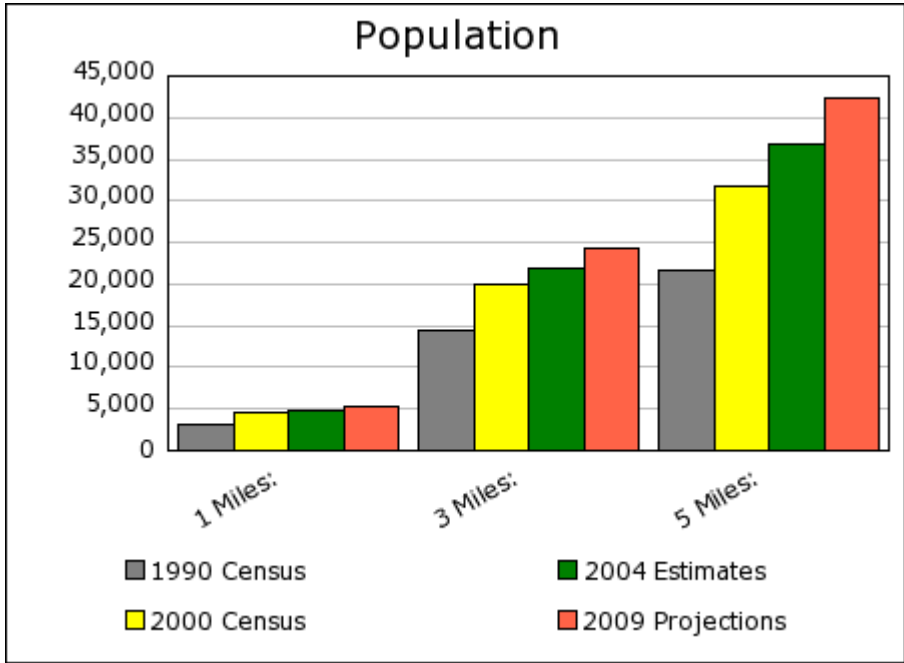
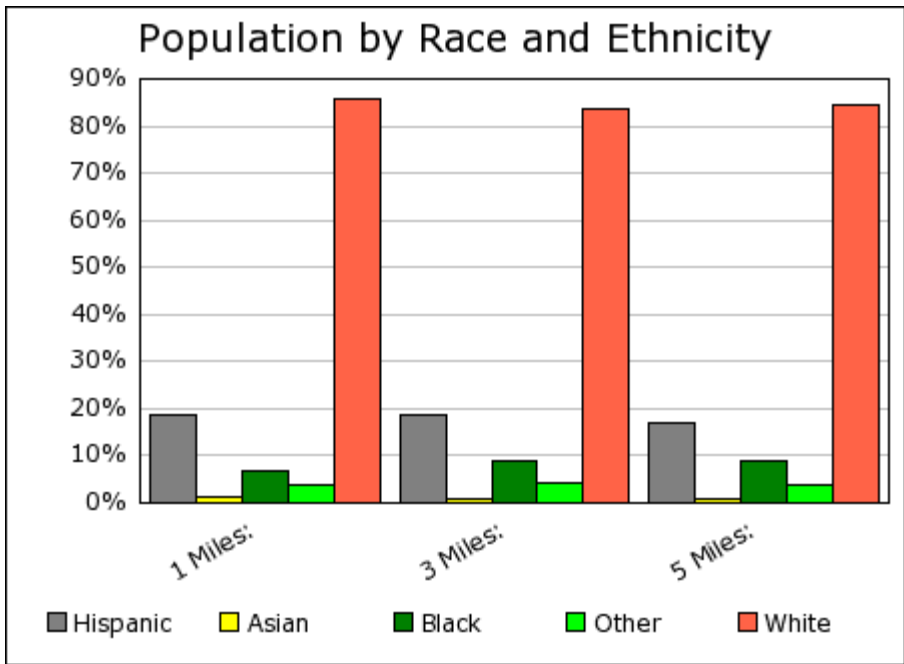


### Percent of Households by Income



### Median Age





## Demographic Snapshot Comparison Report

	1 Miles:	3 Miles:	5 Miles:
<b>Population:</b>			
Total Population	4,774	21,902	36,705
Male Population	44.6%	47.9%	48.7%
Female Population	55.4%	52.1%	51.3%
Median Age	46.6	39.0	38.4
Population Density (per sq. mi.)	1,519.8	774.6	467.4
Employees	2,440	5,231	8,763
Establishments	318	799	1,164
<b>Income:</b>			
Median HH Income	\$28,249	\$37,154	\$41,499

Per Capita Income	\$16,281	\$18,235	\$18,953
Average HH Income	\$35,858	\$46,363	\$48,992
<b>Households:</b>			
Total Households	2,168	8,614	14,200
Average Household Size	2.15	2.52	2.57
Household Growth 1990 - 2000	21.4%	27.0%	37.0%
<b>Housing:</b>			
Owner Occupied Housing Units	60.9%	72.6%	73.8%
Renter Occupied Housing Units	30.0%	16.1%	13.9%
Vacant Housing Units	9.1%	11.3%	12.4%
<b>Race:</b>			
White	85.7%	83.8%	84.3%
Black	7.0%	8.8%	8.9%
American Indian, Eskimo, Aleut	0.2%	0.3%	0.3%
Asian	1.3%	1.0%	0.8%
Hawaiian or Pacific Islander	0.1%	0.0%	0.0%
Other	3.8%	4.0%	3.7%
Multirace	2.1%	2.1%	1.9%
<b>Ethnicity:</b>			
Hispanic	18.8%	18.8%	17.0%
Non-Hispanic	81.2%	81.2%	83.0%

---

Current year data is for the year **2004**, 5 year projected data is for the year **2009**.  
 Demographic data © 2004 by Experian/Applied Geographic Solutions.  
 Crime data © 2004 by Experian/Applied Geographic Solutions. Traffic Count data © 2004 by GDT.  
 The retail centers data used in this site is licensed by National Research Bureau (NRB).  
 Properties data © 2004 by Property & Portfolio Research (PPR) Inc. and Dodge Pipeline All rights reserved.

The information presented herein, while not guaranteed, was obtained from sources we believe to be reliable.  
 Neither STDB, Inc. nor the CCIM Institute assumes any liability for errors or omissions.



This site is brought to you by **STDB, Inc.** Powered by **SRC, LLC**.  
 © 2004 All Rights Reserved.