

**FOR SALE**  
**39.18± Acres - Glades Co.**  
**Future Commercial**



**LOCATION:** 3495 County Road 731, Muse-LaBelle, FL 33935

**STRAP #:** A29-42-29-A00-0040-0000

**ZONING:** CG (Commercial General) 1.78± Acres  
AG (Agriculture) 37.4± Acres

**FUTURE  
LAND USE:** CG (Commercial General)

**SIZE:** 39.18± Acres

**UTILITIES:** Well & Septic

**SALE PRICE:** \$ 3,500,000

**COMMENTS:** Prime Commercial Site in Glades County. Just minutes from Downtown LaBelle. The entire property has a designated future land use of Commercial General. 1.78± Acres has already been designated with CG (Commercial General) Zoning, which allows for a broad variety of uses including retail and office. Convenient location on County road 731 allows for quick access to State Roads 29, 78, and 80, as well as I-75.

**CONTACT:** TOM WOODYARD  
**PHONE:** (239) 425-6011  
**E-MAIL:** twodyard@wa-cr.com

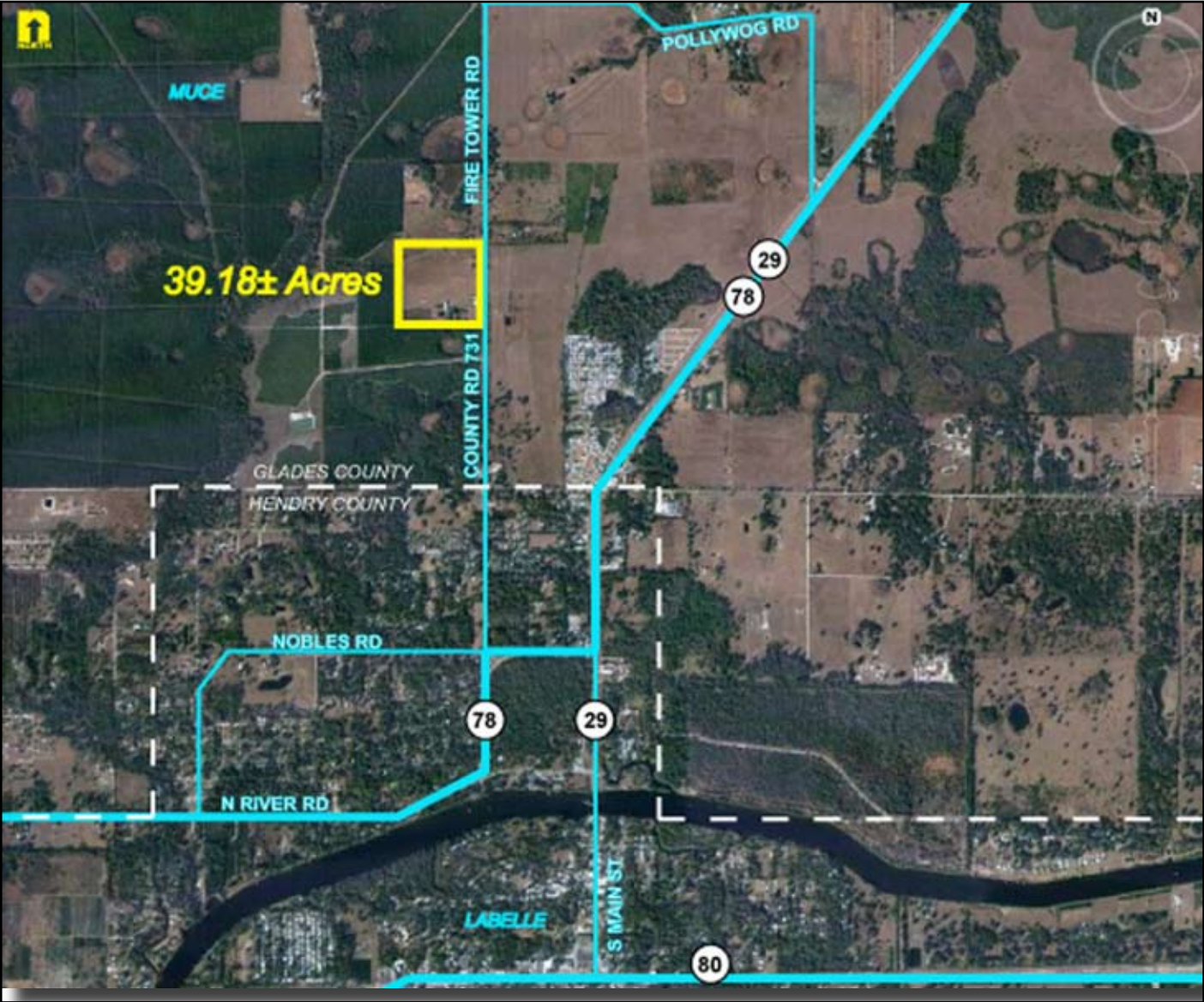
The statements and figures presented herein, while not guaranteed, are secured from sources we believe authoritative. Subject to prior sale, lease, withdrawal and price change without notice.

Brittany Professional Centre, 12670 New Brittany Blvd., Fort Myers, FL 33907 • P.O. Box 60151, Fort Myers, FL 33906

002224 / 6-22-18

(239) 425-6000 • (239) 425-6001 Fax • [www.WA-CR.com](http://www.WA-CR.com)

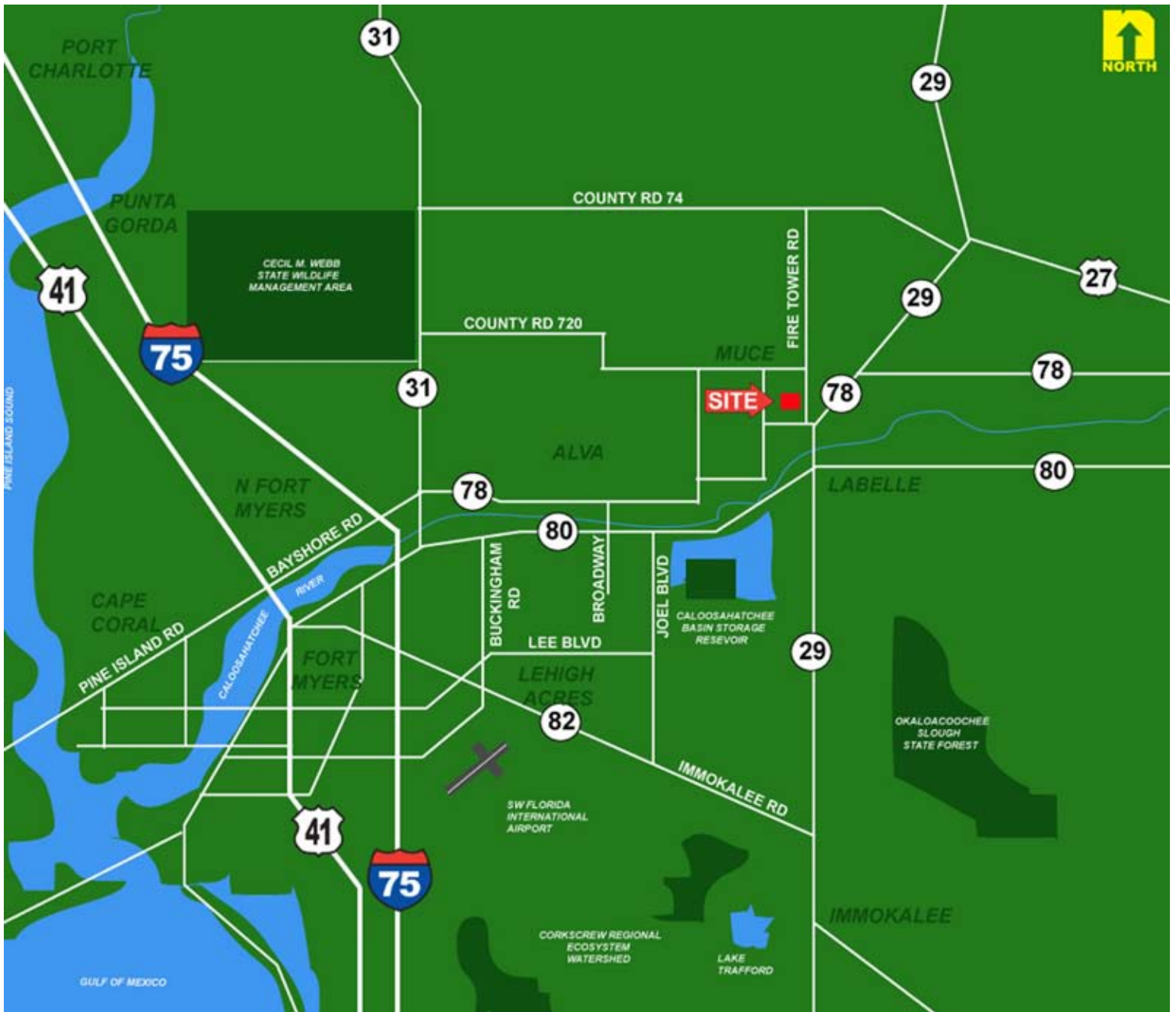
# 3495 County Road 731, Muse-LaBelle, FL 33935



The statements and figures presented herein, while not guaranteed, are secured from sources we believe authoritative. Subject to prior sale, lease, withdrawal and price change without notice.



# 3495 County Road 731, Muse-LaBelle, FL 33935



The statements and figures presented herein, while not guaranteed, are secured from sources we believe authoritative. Subject to prior sale, lease, withdrawal and price change without notice.