



LOCATION: Nelson Road North, Cape Coral, FL 33993

STRAP #: 22-43-23-C3-00005.0020, 22-43-23-C3-00005.0030
14-43-23-00-00001.0010, 14-43-23-00-00001.0000

SIZE: 117± Acres

2014 Taxes: \$6,473.85

ZONING: AG2- Agriculture

PRICE: \$1,200,000

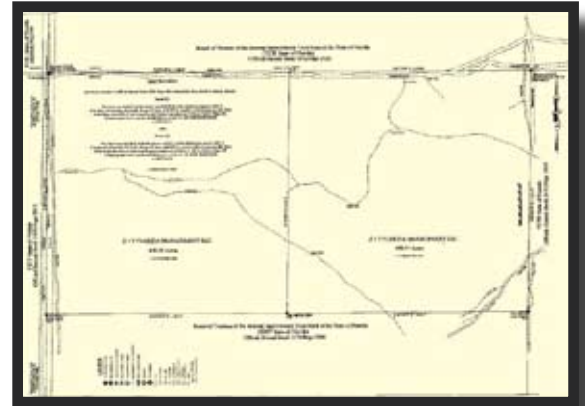
COMMENTS: These sites are located north of Wilmington Parkway on the proposed Nelson Road Extension. Two of the parcels have been annexed to the City of Cape Coral while the other two are in the process of being annexed. The city has demonstrated an interest in allowing the development of the land for commercial purposes.

CONTACT: TOM WOODYARD
PHONE: (239) 425-6011
E-MAIL: twoodyard@wa-cr.com

The statements and figures presented herein, while not guaranteed, are secured from sources we believe authoritative. Subject to prior sale, lease, withdrawal and price change without notice.

Brittany Professional Centre, 12670 New Brittany Blvd., Fort Myers, FL 33907 • P.O. Box 60151, Fort Myers, FL 33906

Nelson Road North, Cape Coral, FL 33993



The statements and figures presented herein, while not guaranteed, are secured from sources we believe authoritative. Subject to prior sale, lease, withdrawal and price change without notice.