

2,800± Warehouse/Office with 1,260± Sq. Ft. Carport FOR LEASE



LOCATION: 17492, 17500, 17504 Rockefeller Circle, Fort Myers, FL 33967

STRAP #: 08-46-25-00008.0340, 08-46-25-00008.0360, 08-46-25-00008.0380

ZONING: C-2 (Commercial) **O.H. DOORS:** (3) 10' x 10' or larger

SIZE: Building: 2,800± Sq. Ft.
Carport: 1,260± Sq. Ft.
Land: .46± Acres

UTILITIES: County Water and Sewer

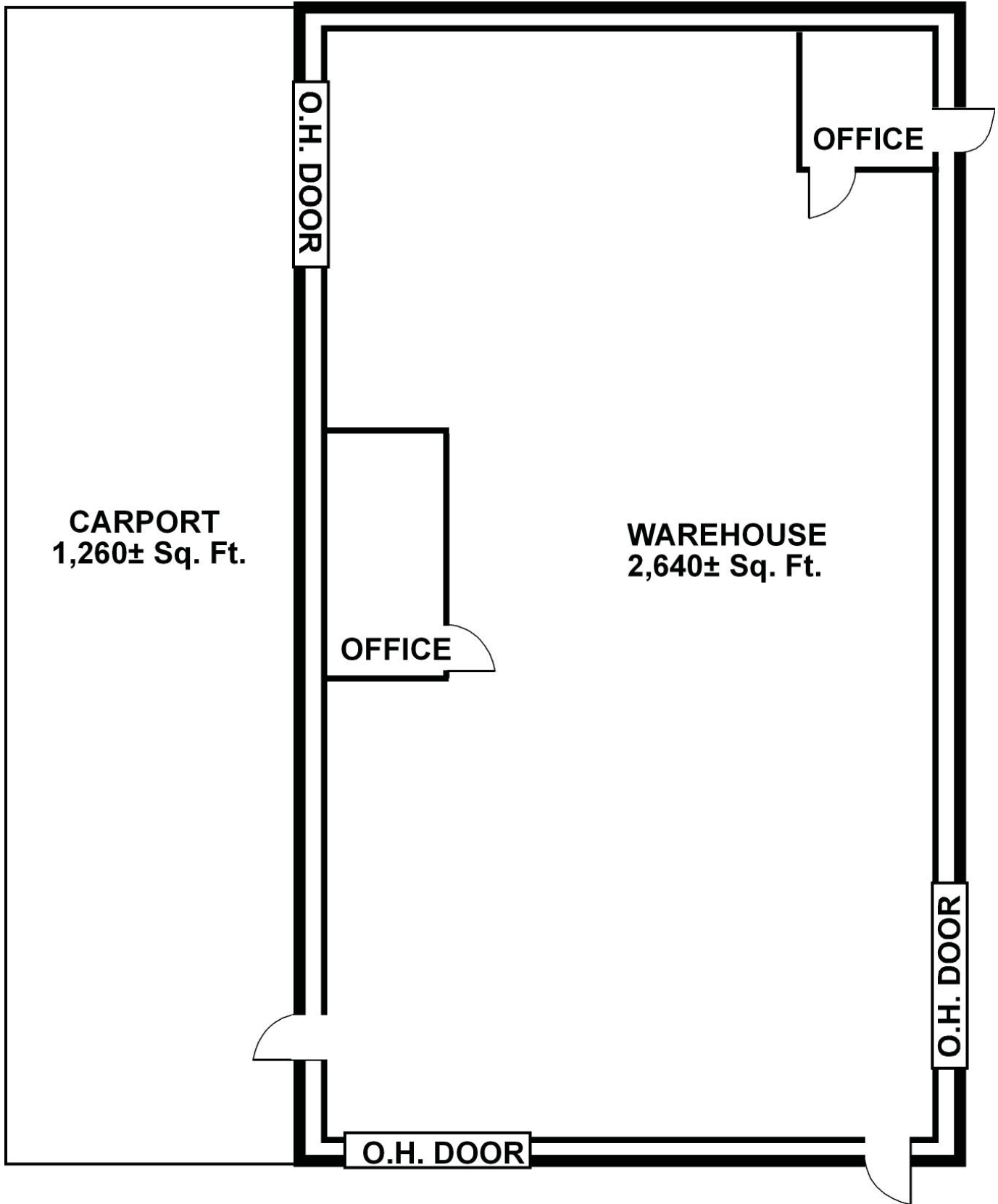
PRICE: \$ 2,750 Monthly + Sales Tax

COMMENTS: 2,800± Sq. Ft. Warehouse/Office with 2,640± Sq. Ft. Warehouse, 160± Sq. Ft. Office, and attached 1,260± Sq. Ft. Carport. The building has three overhead doors and is situated on .46± Acres of land, fully fenced and gated. C-2 (Commercial) Zoning allows for a variety of uses including automotive towing, storage, vehicle sales and much more. Conveniently location, just east of US 41, gives easy access to Lee, Charlotte, Collier, and Hendry counties. An additional 1.09± Acres is also available.

CONTACT: TOM WOODYARD
PHONE: (239) 425-6011
E-MAIL: twoodyard@wa-cr.com

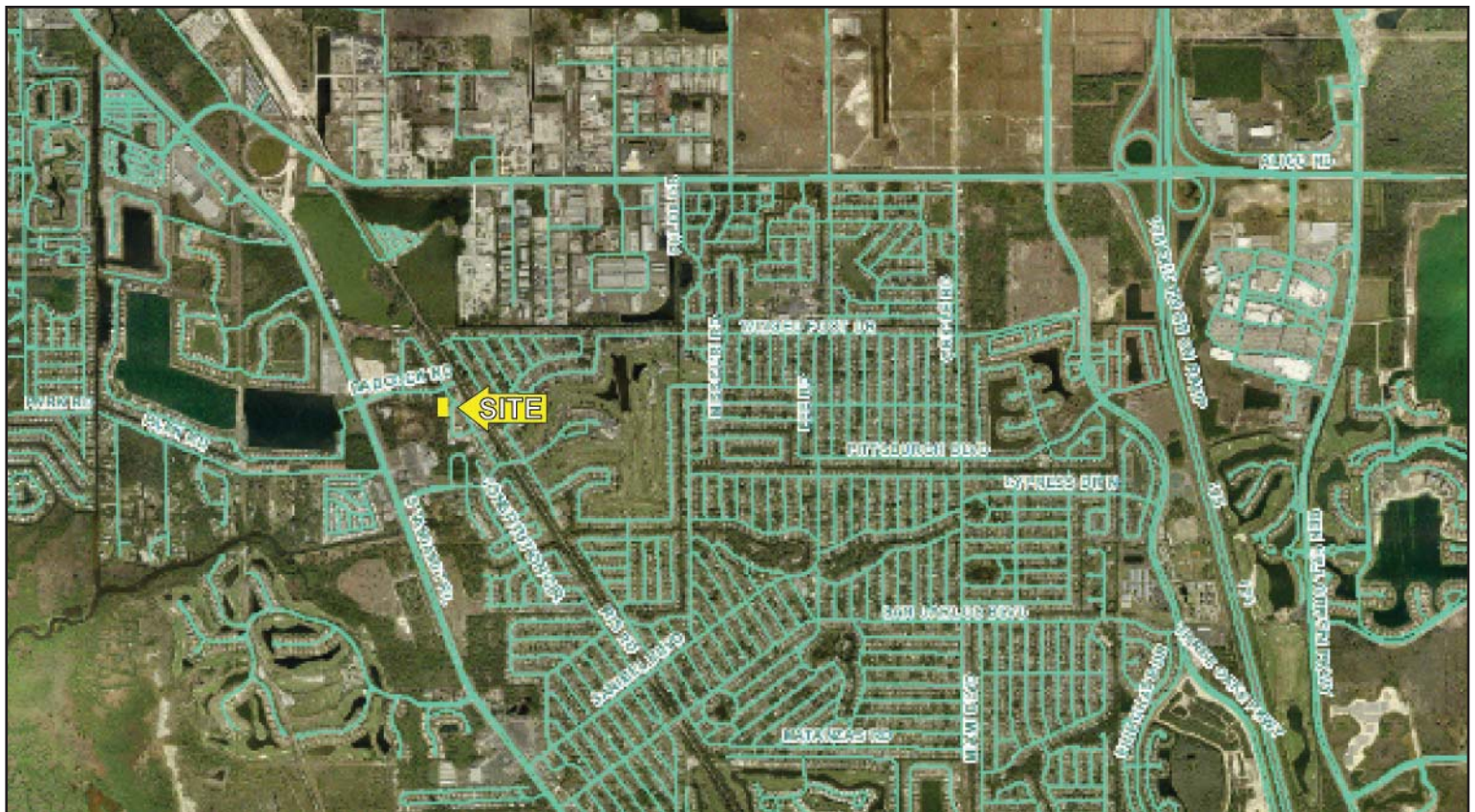
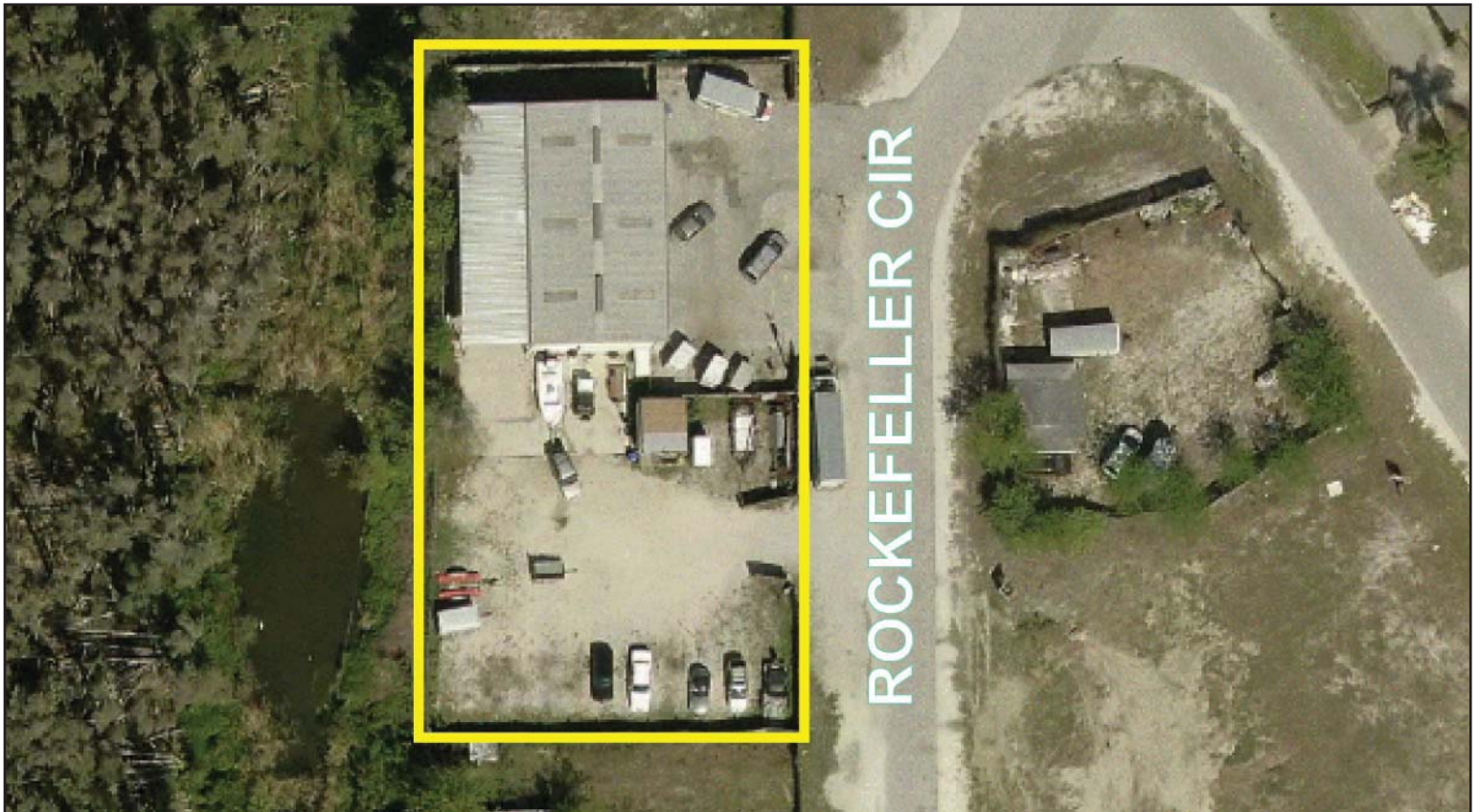
The statements and figures presented herein, while not guaranteed, are secured from sources we believe authoritative. Subject to prior sale, lease, withdrawal and price change without notice.

17492, 17500, 17504 Rockefeller Circle
Fort Myers, FL 33967



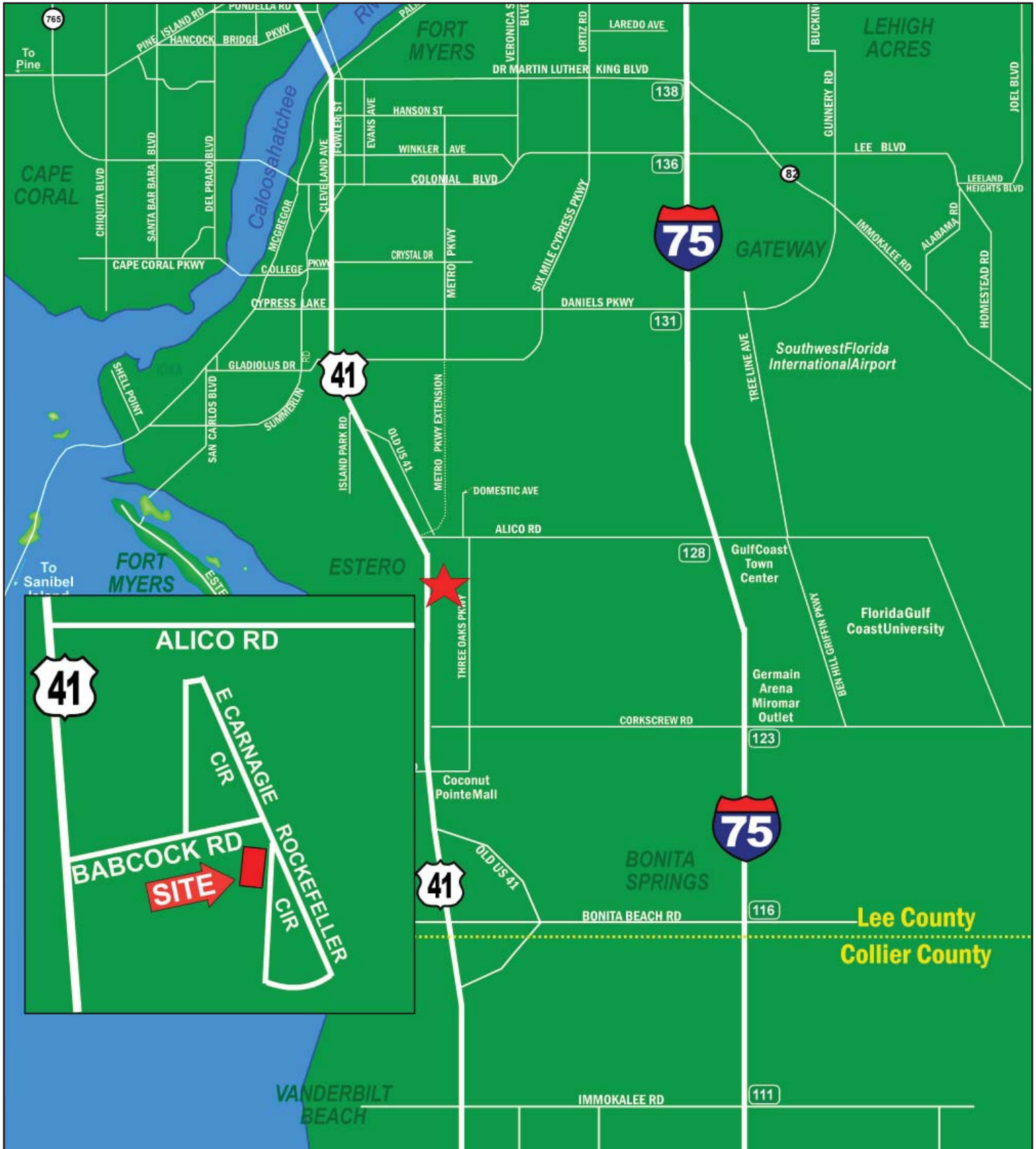
The statements and figures presented herein, while not guaranteed, are secured from sources we believe authoritative. Subject to prior sale, lease, withdrawal and price change without notice.

17492, 17500, 17504 Rockefeller Circle Fort Myers, FL 33967



The statements and figures presented herein, while not guaranteed, are secured from sources we believe authoritative. Subject to prior sale, lease, withdrawal and price change without notice.

17492, 17500, 17504 Rockefeller Circle Fort Myers, FL 33967



The statements and figures presented herein, while not guaranteed, are secured from sources we believe authoritative. Subject to prior sale, lease, withdrawal and price change without notice.