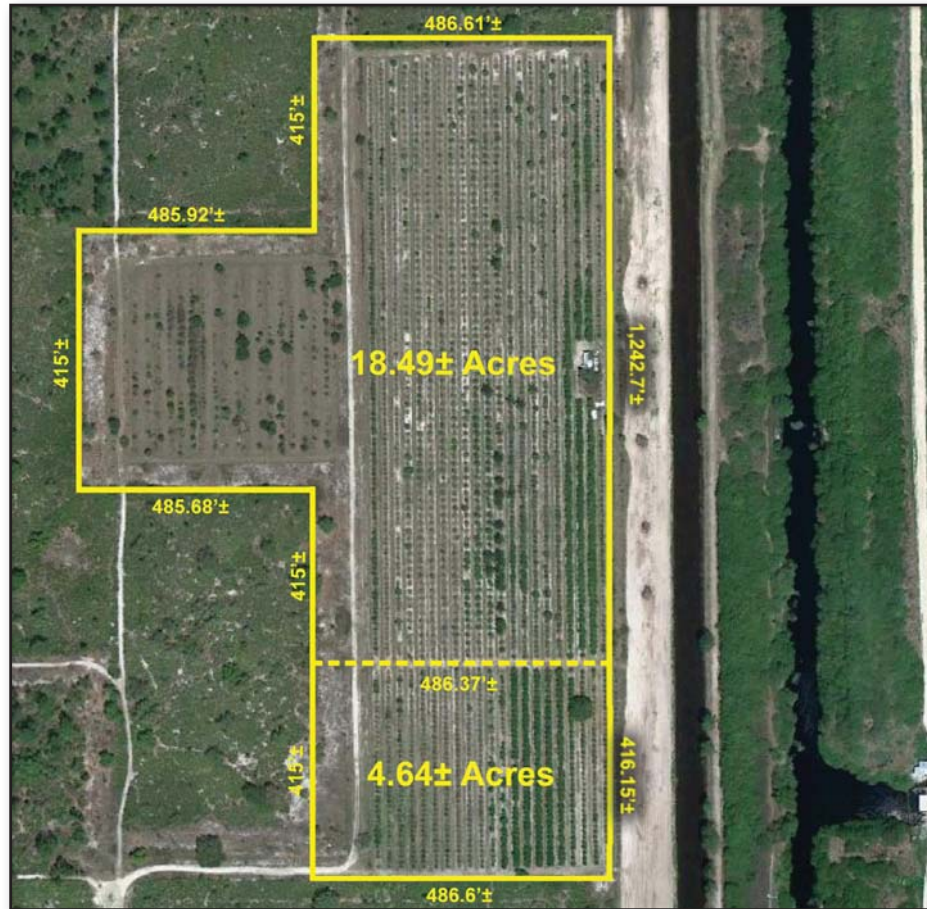


18.49 & 4.64± Acres FOR SALE Hendry County



LOCATION: 4800 Wheeler Road, LaBelle, FL. 33930

PROPERTY ID: 1-28-43-31-A00-0002.1900, 1-28-43-31-A00-0002.1800

ZONING: A-2 (Agriculture)

SIZE: 18.49± Acres and 4.64± Acres
23.13± Acres Total

UTILITIES: Electricity available within 500'±
Water is available via 8" Diameter Well (100'± Deep)

2011 TAXES: 18.49± Acres: \$ 1,321
4.64± Acres: \$ 361

PRICE: 18.49± Acres: \$ 88,752
4.64± Acres: \$ 26,912

COMMENTS: 23.13± Acres of land total divided into 18.49± and 4.64± Acre parcels. This former Citrus Grove is ideal for agricultural uses. An 8" diameter well (100'± deep) provides a water source for adequate irrigation. Convenient location just south of State Road 80, a major east-west corridor in South Florida, allows for easy distribution to various markets.

CONTACT: TOM WOODYARD
PHONE: (239) 425-6011
E-MAIL: twoodyard@wa-cr.com

The statements and figures presented herein, while not guaranteed, are secured from sources we believe authoritative. Subject to prior sale, lease, withdrawal and price change without notice.

4800 Wheeler Road, LaBelle, FL. 33930



The statements and figures presented herein, while not guaranteed, are secured from sources we believe authoritative. Subject to prior sale, lease, withdrawal and price change without notice.