

1.74± AC Commercial Corner State Road 82 Frontage FOR SALE



LOCATION: 1154 Alabama Road South, Lehigh Acres, FL 33974

STRAP #: 18-45-27-32-00033.0000

2010 REAL ESTATE TAXES: \$ 460

ZONING: C1A- Commercial

DIMENSIONS: 264'± Frontage SR 82
315'± Frontage Alabama Rd S

SIZE: 1.74± AC

TRAFFIC COUNT: 29,400 (2009 AADT)

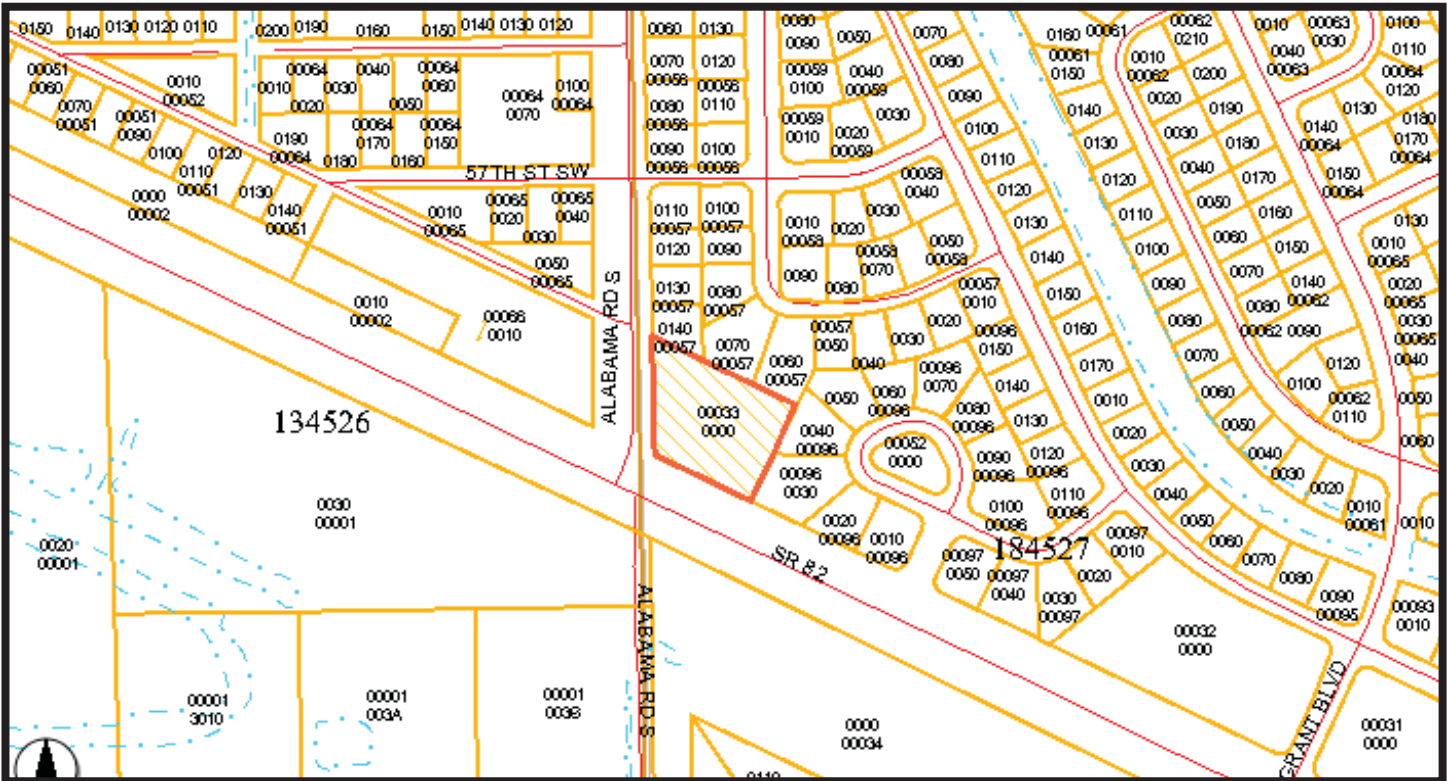
PRICE: \$418,000

COMMENTS: SELLER FINANCING AVAILABLE - 1.74± acres commercial corner site. This property is located at the corner of Alabama Road and SR82 which allows high visibility and traffic flow - a primary route linking Lehigh Acres to the Fort Myers/Cape Coral areas. Close proximity to SW Florida International Airport. Property is zoned C1A allowing both business or commercial uses.

CONTACT: TOM WOODYARD
PHONE: (239) 425-6011
E-MAIL: twodyard@wa-cr.com

The statements and figures presented herein, while not guaranteed, are secured from sources we believe authoritative. Subject to prior sale, lease, withdrawal and price change without notice.

1154 Alabama Road South, Lehigh Acres, FL 33974



The statements and figures presented herein, while not guaranteed, are secured from sources we believe authoritative. Subject to prior sale, lease, withdrawal and price change without notice.