

**.80± AC Commercial Corner Site For Sale  
On State Road 82**



**LOCATION:** 602, 604, 606 & 608 Meadow Road, Lehigh Acres, FL 33973

**STRAP #:** 05-45-26-03-00035.0010; .0020; .0030; .0040

**ZONING:** C2 - Commercial

**SIZE:** .80± AC

**LAND DIMENSIONS:** 201'± Frontage SR 82  
160'± Depth

**PRICE:** \$425,000

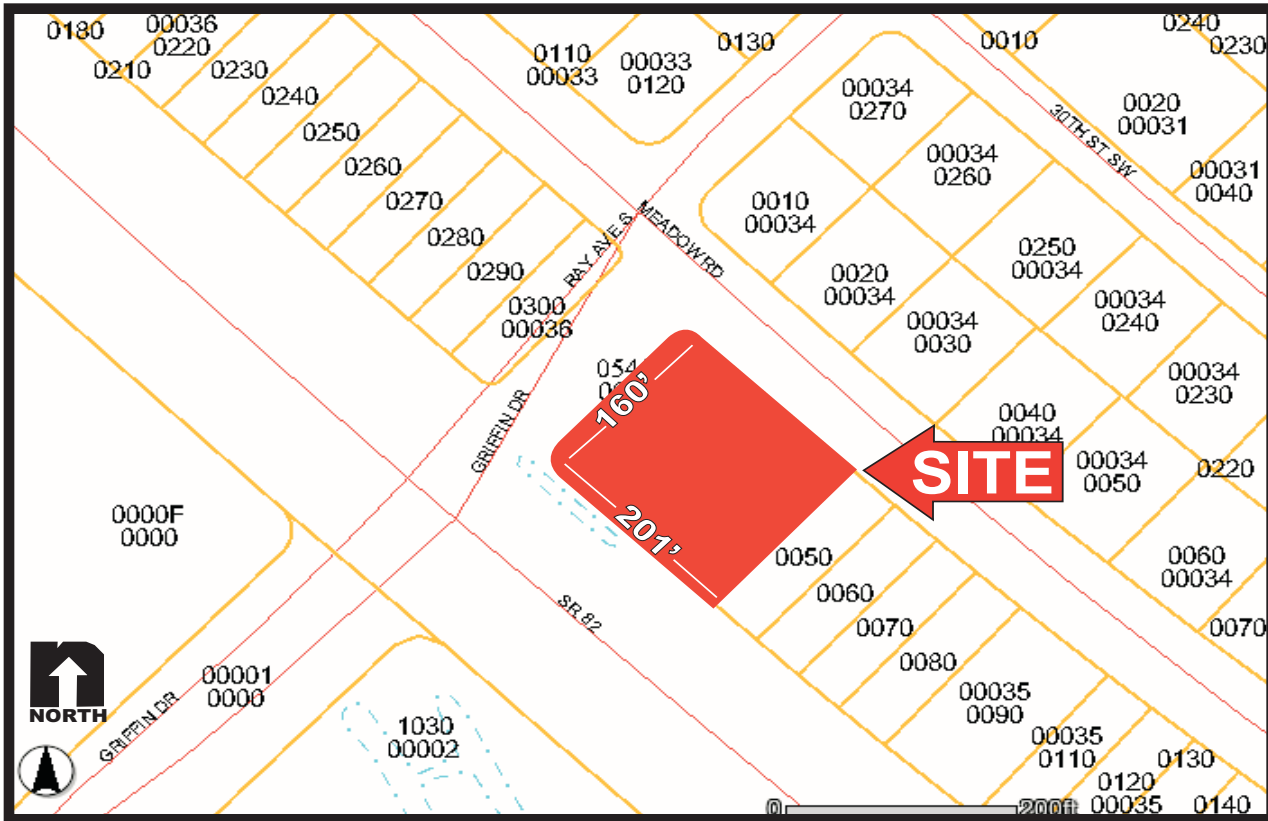
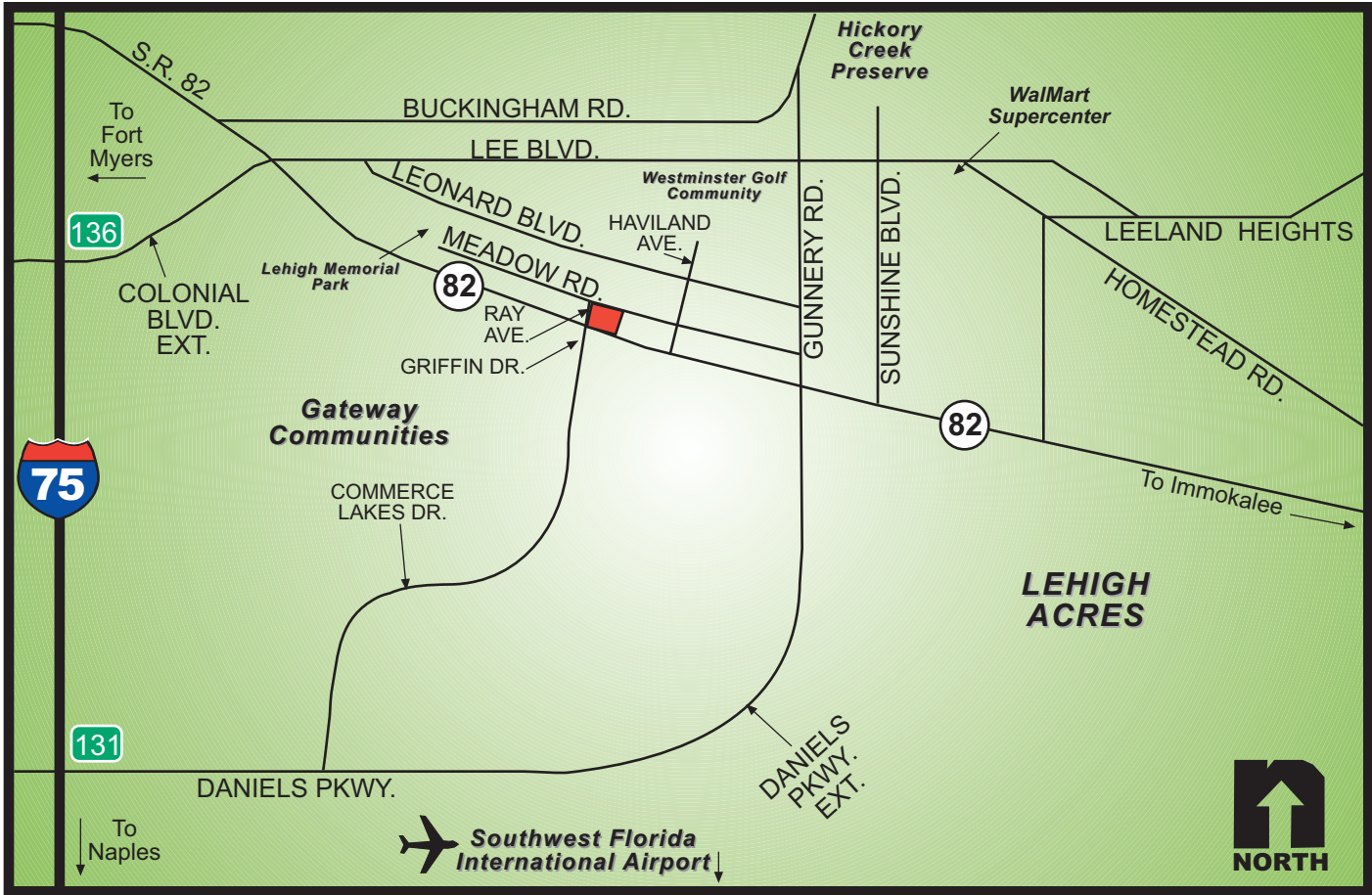
**COMMENTS:** Great Commercial Corner Site. .80± Acres. Zoned C2. Located directly on State Road 82 at the intersection of Griffin Dr. This location allows for high visibility and constant traffic flow to and from Fort Myers. Property consists of 4 separate parcels with approximately 200 FT of frontage on State Road 82.

**CONTACT:** TOM WOODYARD  
**PHONE:** (239) 425-6011  
**E-MAIL:** twodyard@wa-cr.com

**CONTACT:** CARRIE VINCENT  
**PHONE:** (239) 425-6032  
**E-MAIL:** cvincent@wa-cr.com

The statements and figures presented herein, while not guaranteed, are secured from sources we believe authoritative. Subject to prior sale, lease, withdrawal and price change without notice.

# 602, 604, 606 & 608, Meadow Road, Lehigh Acres, FL



The statements and figures presented herein, while not guaranteed, are secured from sources we believe authoritative. Subject to prior sale, lease, withdrawal and price change without notice.